



Rabbit Anti-MAGEA5 antibody

SL6820R

Product Name:	MAGEA5
Chinese Name:	黑色素瘤相关抗原5抗体
Alias:	Cancer/testis antigen 1.5; Cancer/testis antigen family 1 member 5; CT1.5; MAGE 5 antigen; MAGE 5a antigen; MAGE 5b antigen; MAGE5; MAGEA4; Melanoma antigen family A 5; Melanoma associated antigen 5; MGC129526; MAGA5 HUMAN.
Organism Species:	Rabbit
Clonality:	Polyclonal
React Species:	Human,
Applications:	WB=1:500-2000ELISA=1:500-1000IHC-P=1:400-800IHC-F=1:400-800IF=1:100-500 (Paraffin sections need antigen repair) not yet tested in other applications. optimal dilutions/concentrations should be determined by the end user.
Molecular weight:	13kDa
Form:	Lyophilized or Liquid
Concentration:	1mg/ml
immunogen:	KLH conjugated synthetic peptide derived from human MAGEA5:41-124/124
Lsotype:	IgG
Purification:	affinity purified by Protein A
Storage Buffer:	0.01M TBS(pH7.4) with 1% BSA, 0.03% Proclin300 and 50% Glycerol.
Storage:	Store at -20 °C for one year. Avoid repeated freeze/thaw cycles. The lyophilized antibody is stable at room temperature for at least one month and for greater than a year when kept at -20°C. When reconstituted in sterile pH 7.4 0.01M PBS or diluent of antibody the antibody is stable for at least two weeks at 2-4 °C.
PubMed:	PubMed
Product Detail:	MAGEA5 is a member of the MAGEA gene family. The members of this family encode proteins with 50 to 80% sequence identity to each other. The promoters and first exons of the MAGEA genes show considerable variability, suggesting that the existence of this gene family enables the same function to be expressed under different transcriptional controls. The MAGEA genes are clustered at chromosomal location Xq28. They have been implicated in some hereditary disorders, such as dyskeratosis congenita. This

MAGEA gene encodes a protein that is C-terminally truncated compared to other family members, and this gene can be alternatively interpreted to be a pseudogene.

Function:

Not known, though may play a role tumor transformation or progression. In vitro promotes cell viability in melanoma cell lines.

Tissue Specificity:

Expressed in many tumors of several types, such as melanoma, head and neck squamous cell carcinoma, lung carcinoma and breast carcinoma, but not in normal tissues except for testes.

Similarity:

Contains 1 MAGE domain.

SWISS:

P43359

Gene ID:

4104

Database links:

[Entrez Gene: 4104](#)Human

[Entrez Gene: 100533997](#)Human

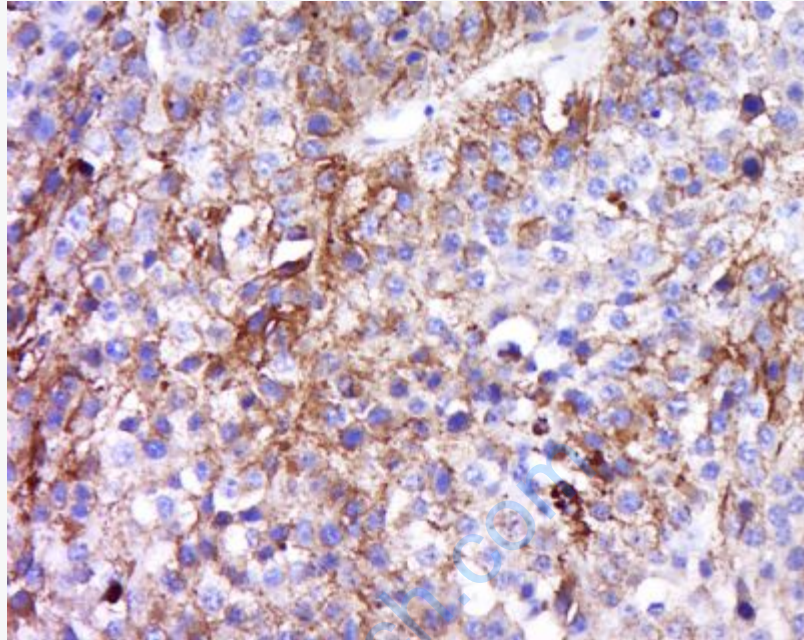
[Omim: 300340](#)Human

[SwissProt: P43359](#)Human

[Unigene: 668021](#)Human

Important Note:

This product as supplied is intended for research use only, not for use in human, therapeutic or diagnostic applications.



Picture:

Tissue/cell: human melanoma tumor; 4% Paraformaldehyde-fixed and paraffin-embedded;

Antigen retrieval: citrate buffer (0.01M, pH 6.0), Boiling bathing for 15min; Block endogenous peroxidase by 3% Hydrogen peroxide for 30min; Blocking buffer (normal goat serum,C-0005) at 37°C for 20 min;

Incubation: Anti-MAGEA5 Polyclonal Antibody, Unconjugated(SL6820R) 1:500, overnight at 4°C, followed by conjugation to the secondary antibody(SP-0023) and DAB(C-0010) staining