



Rabbit Anti-MAGEB6 antibody

SL6825R

Product Name:	MAGEB6
Chinese Name:	黑色素瘤相关抗原B6抗体
Alias:	Cancer/testis antigen 3.4; CT3.4; MAGEB6 antigen; Melanoma associated antigen B6; MAGB6 HUMAN.
Organism Species:	Rabbit
Clonality:	Polyclonal
React Species:	Human,
Applications:	WB=1:500-2000ELISA=1:500-1000IHC-P=1:400-800IHC-F=1:400-800IF=1:100-500 (Paraffin sections need antigen repair) not yet tested in other applications. optimal dilutions/concentrations should be determined by the end user.
Molecular weight:	44kDa
Cellular localization:	The nucleuscytoplasmicThe cell membrane
Form:	Lyophilized or Liquid
Concentration:	1mg/ml
immunogen:	KLH conjugated synthetic peptide derived from human MAGEB6:151-250/407
Lsotype:	IgG
Purification:	affinity purified by Protein A
Storage Buffer:	0.01M TBS(pH7.4) with 1% BSA, 0.03% Proclin300 and 50% Glycerol.
Storage:	Store at -20 °C for one year. Avoid repeated freeze/thaw cycles. The lyophilized antibody is stable at room temperature for at least one month and for greater than a year when kept at -20°C. When reconstituted in sterile pH 7.4 0.01M PBS or diluent of antibody the antibody is stable for at least two weeks at 2-4 °C.
PubMed:	PubMed
Product Detail:	The melanoma-associated antigen (MAGE) family consists of a number of antigens recognized by cytotoxic T lymphocytes. The MAGE genes were initially isolated from different type of tumors, and based on their virtually exclusive tumor-specific expression in adult tissues, they have been used as targets for cancer immunotherapy. MAGE genes encode for tumor-rejection antigens and are expressed in tumors of different histologic types, but not in normal tissues, with the exception of testis and placenta. Although a

large number of MAGE genes have now been identified and extensively studied in tumors of various origin, their function in normal cells remains unknown. MAGE-B6 is expressed in testis and tumors of various histological origins but has not been shown to be expressed in other normal tissues.

Tissue Specificity:

Expressed in testis. Not expressed in other normal tissues, but is expressed in tumors of different histological origins.

Similarity:

Contains 1 MAGE domain.

SWISS:

Q8N7X4

Gene ID:

158809

Database links:

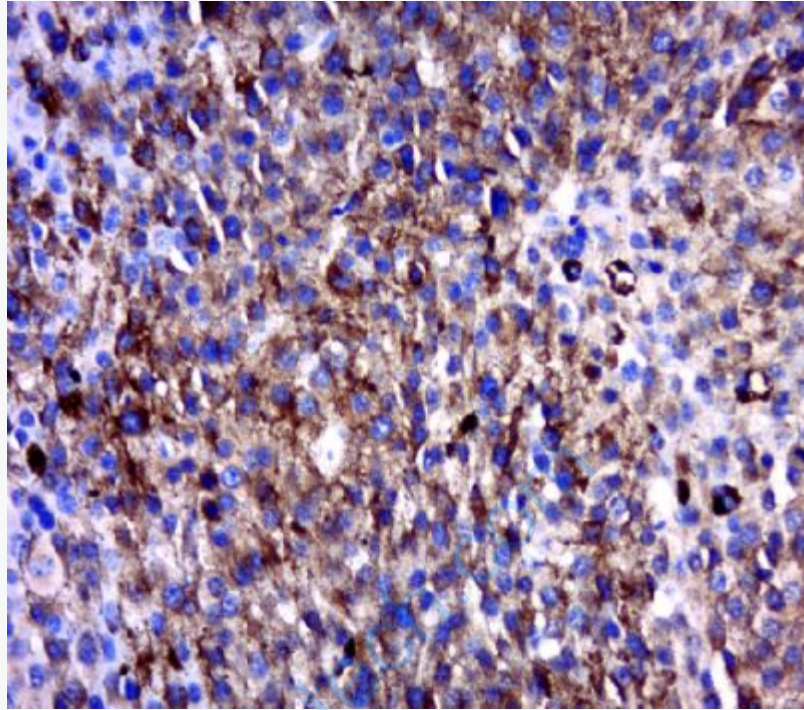
[Entrez Gene: 158809](#)Human

[Omin: 300467](#)Human

[SwissProt: Q8N7X4](#)Human

Important Note:

This product as supplied is intended for research use only, not for use in human, therapeutic or diagnostic applications.



Picture:

Paraformaldehyde-fixed, paraffin embedded (human melanoma tumor); Antigen retrieval by boiling in sodium citrate buffer (pH6.0) for 15min; Block endogenous peroxidase by 3% hydrogen peroxide for 20 minutes; Blocking buffer (normal goat serum) at 37°C for 30min; Antibody incubation with (MAGEB6) Polyclonal Antibody, Unconjugated (SL6825R) at 1:400 overnight at 4°C, followed by a conjugated secondary (sp-0023) for 20 minutes and DAB staining.