



Rabbit Anti-GAS2L1 antibody

SL6836R

Product Name:	GAS2L1
Chinese Name:	生长停滞特异性蛋白2家族1抗体
Alias:	GA2L1_HUMAN; GAR 22; GAR22; GAS2 like protein 1; GAS2 related protein on chromosome 22; GAS2-like protein 1; GAS2-related protein on chromosome 22; GAS2L1; Growth arrest specific 2 like 1; Growth arrest specific protein 2 like 1; Growth arrest-specific protein 2-like 1; MGC17243.
Organism Species:	Rabbit
Clonality:	Polyclonal
React Species:	Human,Mouse,Rat,Dog,Pig,Cow,Horse,Sheep,
Applications:	ELISA=1:500-1000IHC-P=1:400-800IHC-F=1:400-800IF=1:100-500 (Paraffin sections need antigen repair) not yet tested in other applications. optimal dilutions/concentrations should be determined by the end user.
Molecular weight:	73kDa
Cellular localization:	cytoplasmic
Form:	Lyophilized or Liquid
Concentration:	1mg/ml
immunogen:	KLH conjugated synthetic peptide derived from Human GAS2L1:201-300/681
Lsotype:	IgG
Purification:	affinity purified by Protein A
Storage Buffer:	0.01M TBS(pH7.4) with 1% BSA, 0.03% Proclin300 and 50% Glycerol.
Storage:	Store at -20 °C for one year. Avoid repeated freeze/thaw cycles. The lyophilized antibody is stable at room temperature for at least one month and for greater than a year when kept at -20°C. When reconstituted in sterile pH 7.4 0.01M PBS or diluent of antibody the antibody is stable for at least two weeks at 2-4 °C.
PubMed:	PubMed
Product Detail:	The protein encoded by this gene, a member of the GAS2 family, is similar in sequence to the mouse protein Gas2, an actin-associated protein expressed at high levels in growth-arrested cells. Expression of the mouse Gas2 gene is negatively regulated by serum and growth factors. Three transcript variants encoding two different isoforms

have been found for this gene. [provided by RefSeq, Jul 2008].

Function:

Seems to be involved in the cross-linking of microtubules and microfilaments.

Subcellular Location:

Cytoplasm, cytoskeleton (Probable).

Similarity:

Belongs to the GAS2 family.

Contains 1 CH (calponin-homology) domain.

Contains 1 GAR domain.

SWISS:

Q99501

Gene ID:

10634

Database links:

[Entrez Gene: 518935](#)Cow

[Entrez Gene: 10634](#)Human

[Entrez Gene: 78926](#)Mouse

[Entrez Gene: 360973](#)Rat

[Olim: 602128](#)Human

[SwissProt: Q99501](#)Human

[SwissProt: Q8JZP9](#)Mouse

[Unigene: 322852](#)Human

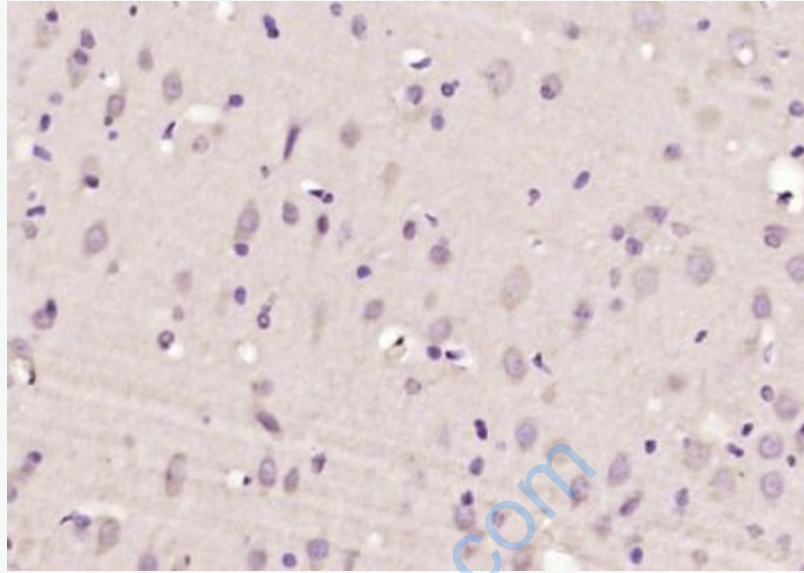
[Unigene: 374836](#)Mouse

[Unigene: 44591](#)Mouse

[Unigene: 22169](#)Rat

Important Note:

This product as supplied is intended for research use only, not for use in human, therapeutic or diagnostic applications.



Picture:

Paraformaldehyde-fixed, paraffin embedded (rat brain); Antigen retrieval by boiling in sodium citrate buffer (pH6.0) for 15min; Block endogenous peroxidase by 3% hydrogen peroxide for 20 minutes; Blocking buffer (normal goat serum) at 37°C for 30min; Antibody incubation with (GAS2L1) Polyclonal Antibody, Unconjugated (SL6836R) at 1:200 overnight at 4°C, followed by operating according to SP Kit(Rabbit) (sp-0023) instructions and DAB staining.