



Rabbit Anti-IL-4I1 antibody

SL6841R

Product Name:	IL-4I1
Chinese Name:	白细胞介素4诱导蛋白1抗体
Alias:	IL4I1; hFIG1; IL4 induced protein 1; IL-4 induced protein 1; Interleukin 4 induced protein 1; LAAO; FIG 1; Fig 1 protein; FIG1; Fig1 protein; hFIG 1; hFIG1; IL4-induced protein 1; Interleukin 4 induced 1; Interleukin four induced 1; Interleukin-4-induced protein 1; L amino acid oxidase; L-amino-acid oxidase; LAAO; LAO; Protein Fig 1; Protein Fig-1; Protein Fig1; OXLA_HUMAN.
Organism Species:	Rabbit
Clonality:	Polyclonal
React Species:	Human,Mouse,Rat,Dog,Pig,Sheep,
Applications:	WB=1:500-2000ELISA=1:500-1000IHC-P=1:400-800IHC-F=1:400-800IF=1:100-500 (Paraffin sections need antigen repair) not yet tested in other applications. optimal dilutions/concentrations should be determined by the end user.
Molecular weight:	61kDa
Cellular localization:	cytoplasmic
Form:	Lyophilized or Liquid
Concentration:	1mg/ml
immunogen:	KLH conjugated synthetic peptide derived from human IL-4I1:51-160/567
Lsotype:	IgG
Purification:	affinity purified by Protein A
Storage Buffer:	0.01M TBS(pH7.4) with 1% BSA, 0.03% Proclin300 and 50% Glycerol.
Storage:	Store at -20 °C for one year. Avoid repeated freeze/thaw cycles. The lyophilized antibody is stable at room temperature for at least one month and for greater than a year when kept at -20°C. When reconstituted in sterile pH 7.4 0.01M PBS or diluent of antibody the antibody is stable for at least two weeks at 2-4 °C.
PubMed:	PubMed
Product Detail:	This gene encodes a protein with limited similarity to L-amino acid oxidase which contains the conserved amino acids thought to be involved in catalysis and binding of flavin adenine dinucleotide (FAD) cofactor. The expression of this gene can be induced

by interleukin 4 in B cells, however, expression of transcripts containing the first two exons of the upstream gene is found in other cell types. Multiple transcript variants encoding different isoforms have been found for this gene. [provided by RefSeq, Apr 2012].

Function:

Lysosomal L-amino-acid oxidase with highest specific activity with phenylalanine. May play a role in lysosomal antigen processing and presentation (By similarity).

Subcellular Location:

Isoform 1: Lysosome (By similarity).

Isoform 2: Lysosome (By similarity).

Tissue Specificity:

Isoform 1 is primarily found in immune tissues.

Similarity:

Belongs to the flavin monoamine oxidase family. FIG1 subfamily.

SWISS:

Q96RQ9

Gene ID:

259307

Database links:

[Entrez Gene: 259307](#)Human

[Entrez Gene: 14204](#)Mouse

[Omim: 609742](#)Human

[SwissProt: Q1WMJ3](#)Human

[SwissProt: Q96RQ9](#)Human

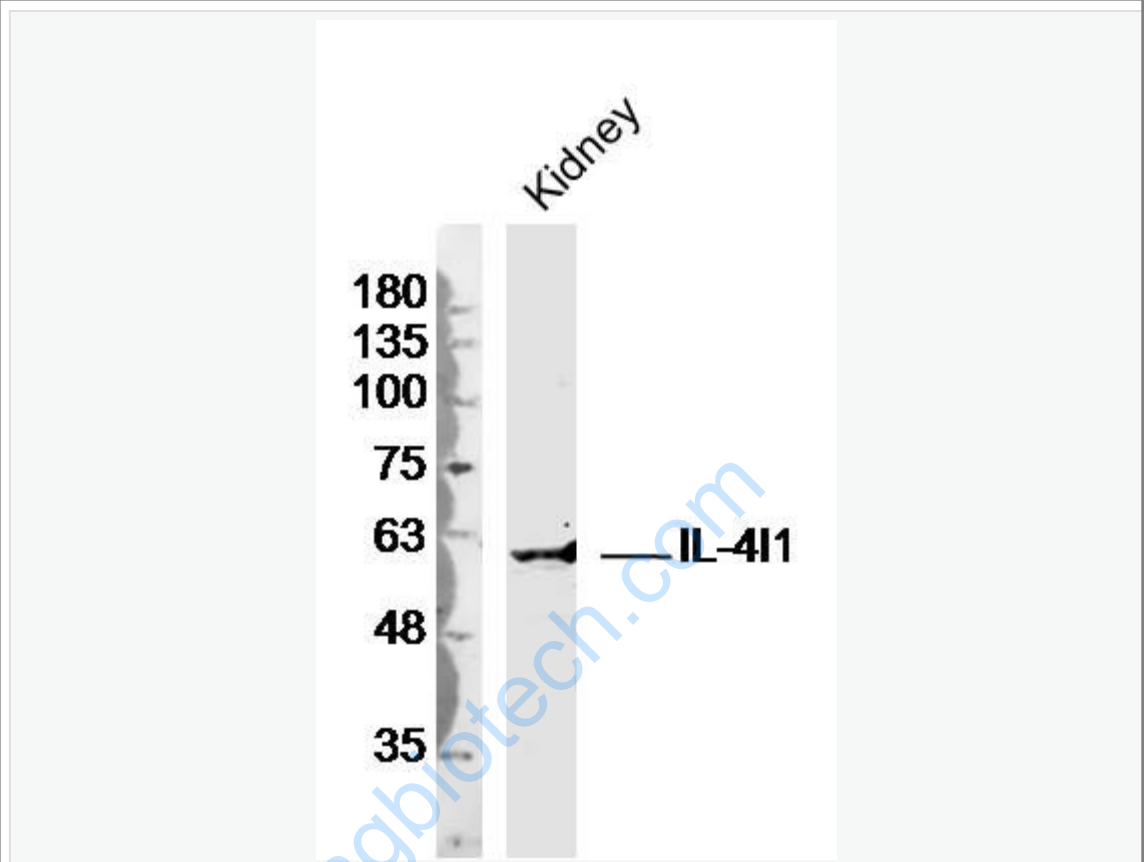
[SwissProt: O09046](#)Mouse

[Unigene: 27567](#)Mouse

Important Note:

This product as supplied is intended for research use only, not for use in human, therapeutic or diagnostic applications.

Picture:



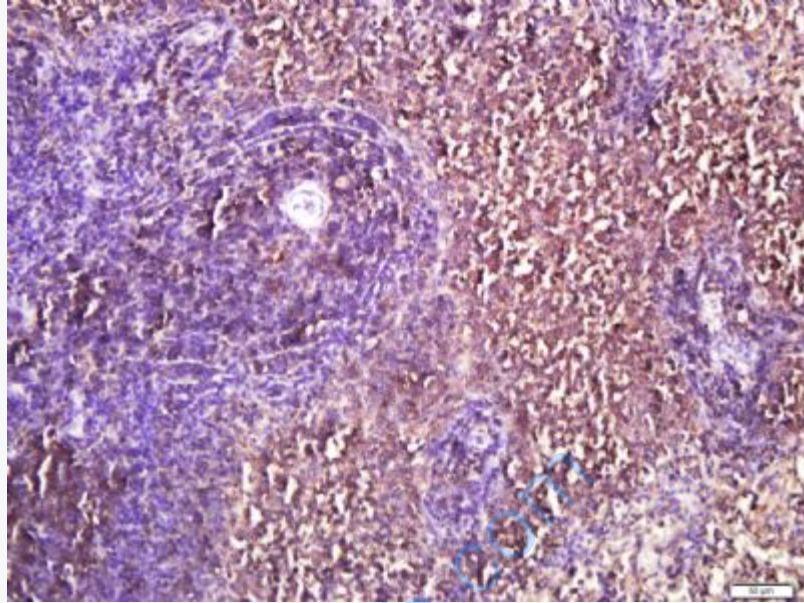
Sample: Kidney (Mouse) Lysate at 40 ug

Primary: Anti-IL-41(SL6841R) at 1/300 dilution

Secondary: IRDye800CW Goat Anti-Rabbit IgG at 1/20000 dilution

Predicted band size: 61kD

Observed band size: 61kD



Paraformaldehyde-fixed, paraffin embedded (rat spleen); Antigen retrieval by boiling in sodium citrate buffer (pH6.0) for 15min; Block endogenous peroxidase by 3% hydrogen peroxide for 20 minutes; Blocking buffer (normal goat serum) at 37°C for 30min; Antibody incubation with (IL-4I1) Polyclonal Antibody, Unconjugated (SL6841R) at 1:400 overnight at 4°C, followed by a conjugated secondary (sp-0023) for 20 minutes and DAB staining.