



## Rabbit Anti-Nucleostemin antibody

SL6846R

<b>Product Name:</b>	Nucleostemin
<b>Chinese Name:</b>	核Stem cells因子鸟嘌呤核苷酸Binding protein3抗体
<b>Alias:</b>	E2 induced gene 3 protein; E2IG3; Estradiol induced nucleotide binding protein; GNL3; Guanine nucleotide binding protein like 3 (nucleolar); Guanine nucleotide binding protein like 3; MGC800; NNP47; Novel nucleolar protein 47; NS; Nucleolar GTP binding protein 3; Nucleostemin; Putative nucleotide binding protein estradiol induced; C77032; GNL3 HUMAN.
<b>Organism Species:</b>	Rabbit
<b>Clonality:</b>	Polyclonal
<b>React Species:</b>	Human,Mouse,Rat,Dog,Pig,Cow,Sheep,
<b>Applications:</b>	WB=1:500-2000ELISA=1:500-1000IHC-P=1:400-800IHC-F=1:400-800IF=1:100-500 (Paraffin sections need antigen repair) not yet tested in other applications. optimal dilutions/concentrations should be determined by the end user.
<b>Molecular weight:</b>	62kDa
<b>Cellular localization:</b>	The nucleus
<b>Form:</b>	Lyophilized or Liquid
<b>Concentration:</b>	1mg/ml
<b>immunogen:</b>	KLH conjugated synthetic peptide derived from human Nucleostemin:101-160/548
<b>Lsotype:</b>	IgG
<b>Purification:</b>	affinity purified by Protein A
<b>Storage Buffer:</b>	0.01M TBS(pH7.4) with 1% BSA, 0.03% Proclin300 and 50% Glycerol.
<b>Storage:</b>	Store at -20 °C for one year. Avoid repeated freeze/thaw cycles. The lyophilized antibody is stable at room temperature for at least one month and for greater than a year when kept at -20°C. When reconstituted in sterile pH 7.4 0.01M PBS or diluent of antibody the antibody is stable for at least two weeks at 2-4 °C.
<b>PubMed:</b>	<a href="#">PubMed</a>
<b>Product Detail:</b>	Nucleostemin is a protein found in the nucleoli of embryonic stem cells, adult CNS stem cells, primitive cells in the bone marrow and cancer cells. It is not in the differentiated cells of most adult tissues. It has been suggested to play a role in controlling the cell

cycle progression in stem cells and cancer cells.

**Function:**

May be required to maintain the proliferative capacity of stem cells and may play an important role in tumorigenesis.

**Subunit:**

Interacts with MDM2; this interaction stabilizes MDM2. Interaction with MDM2 occurs in the nucleoplasm and is triggered by a nucleolar release mechanism, such as mitosis-induced nucleolar disassembly (By similarity). Indirectly interacts with TP53, via MDM2-binding (By similarity).

**Subcellular Location:**

Nucleus. Nucleus. nucleolus. Shuttles between the nucleus and nucleolus.

**Tissue Specificity:**

Increased levels in lung tissue in cancer patients.

**Similarity:**

Belongs to the MMR1/HSR1 GTP-binding protein family.  
Contains 1 G (guanine nucleotide-binding) domain.

**SWISS:**

Q9BVP2

**Gene ID:**

26354

**Database links:**

[Entrez Gene: 26354](#)Human

[Entrez Gene: 30877](#)Mouse

[Entrez Gene: 290556](#)Rat

[Omim: 608011](#)Human

[SwissProt: Q9BVP2](#)Human

[SwissProt: Q8CI11](#)Mouse

[SwissProt: Q811S9](#)Rat

[Unigene: 313544](#)Human

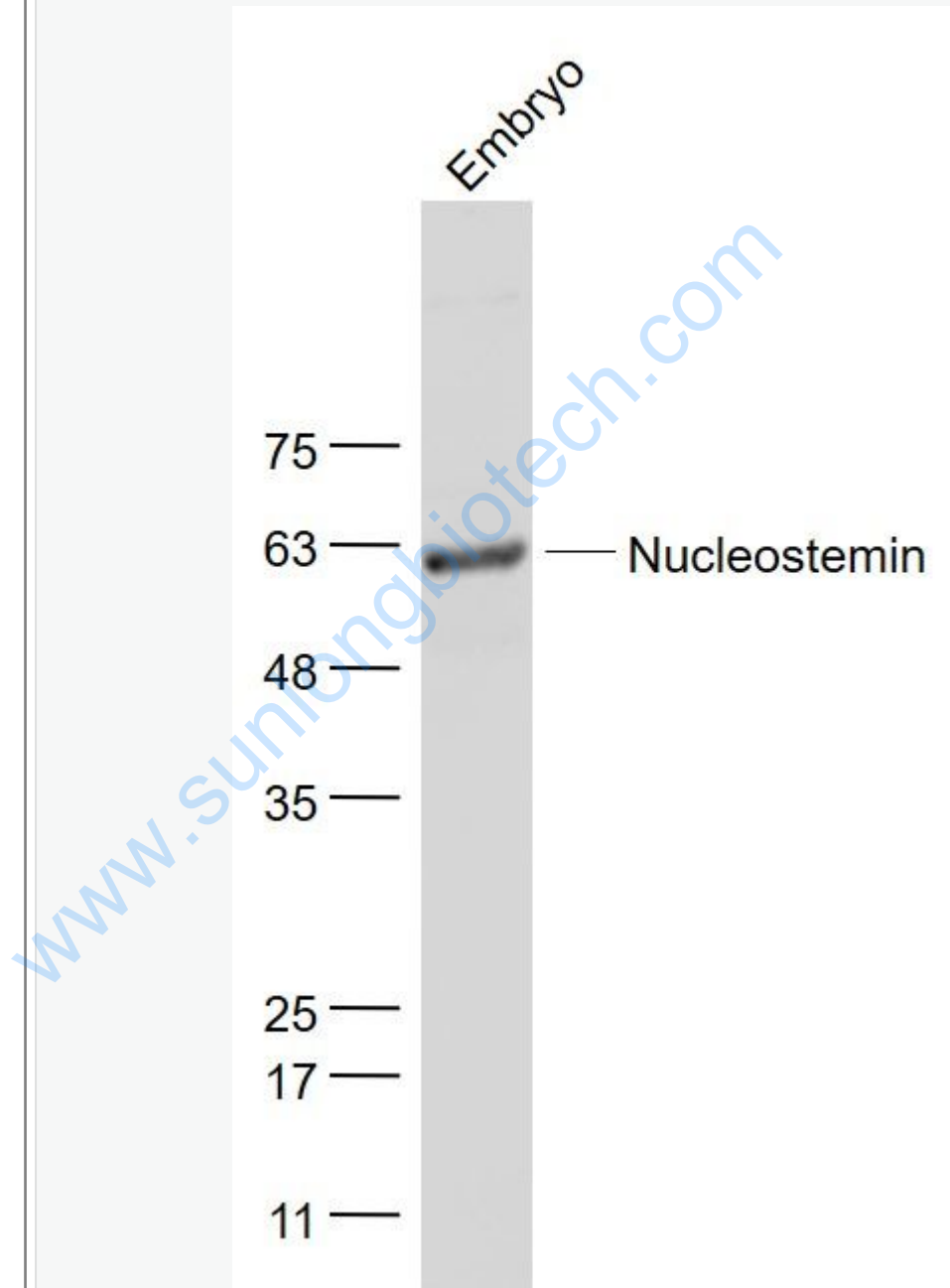
[Unigene: 88512](#)Mouse

[Unigene: 4110](#)Rat

**Important Note:**

This product as supplied is intended for research use only, not for use in human, therapeutic or diagnostic applications.

Picture:



Sample:

Embryo(Mouse) Lysate at 40 ug

Primary: Anti- Nucleostemin (SL6846R) at 1/1000 dilution

Secondary: IRDye800CW Goat Anti-Rabbit IgG at 1/20000 dilution

Predicted band size: 62 kD

Observed band size: 62 kD

[www.sunlongbiotech.com](http://www.sunlongbiotech.com)