



Rabbit Anti-Caspase-5 p20 antibody

SL6860R

Product Name:	Caspase-5 p20
Chinese Name:	半胱氨酸蛋白酶蛋白5抗体
Alias:	Caspase-5 subunit p20; Apoptosis related cysteine protease; CASP 5; CASP5; Caspase-5; Caspase5; Caspase 5 apoptosis related cysteine peptidase; caspase 5 apoptosis related cysteine protease; ICE; ICE(rel) III; ICE(rel)III; ICEREL III; ICERELIII; ICH 3; ICH 3 protease; ICH3; ICH3 protease; MGC141966; TY; TY protease.
Organism Species:	Rabbit
Clonality:	Polyclonal
React Species:	Human,Mouse,Rat,Dog,Pig,Cow,Horse,Rabbit,
Applications:	WB=1:500-2000ELISA=1:500-1000IHC-P=1:400-800IHC-F=1:400-800IF=1:100-500 (Paraffin sections need antigen repair) not yet tested in other applications. optimal dilutions/concentrations should be determined by the end user.
Molecular weight:	48kDa
Cellular localization:	cytoplasmic
Form:	Lyophilized or Liquid
Concentration:	1mg/ml
immunogen:	KLH conjugated synthetic peptide derived from human Caspase-5 subunit p20:261-360/434
Lsotype:	IgG
Purification:	affinity purified by Protein A
Storage Buffer:	0.01M TBS(pH7.4) with 1% BSA, 0.03% Proclin300 and 50% Glycerol.
Storage:	Store at -20 °C for one year. Avoid repeated freeze/thaw cycles. The lyophilized antibody is stable at room temperature for at least one month and for greater than a year when kept at -20°C. When reconstituted in sterile pH 7.4 0.01M PBS or diluent of antibody the antibody is stable for at least two weeks at 2-4 °C.
PubMed:	PubMed
Product Detail:	Caspase 5 belongs to the Ced3/ICE family of cystein proteases and is an upstream Caspase with a long prodomain. It undergoes a cleavage upon activation, leading to p20 and p10 subunits which have high homology with several other Caspases over the

equivalent coding sequences.

Subunit:

Heterotetramer that consists of two anti-parallel arranged heterodimers, each one formed by a 20 kDa (p20) and a 10kDa (p10) subunits.

Tissue Specificity:

Expressed in barely detectable amounts in most tissues except brain, highest levels being found in lung, liver and skeletal muscle.

Similarity:

Belongs to the peptidase C14A family.
Contains 1 CARD domain.

SWISS:

P51878

Gene ID:

838

Database links:

[Entrez Gene: 838](#)Human

[Omin: 602665](#)Human

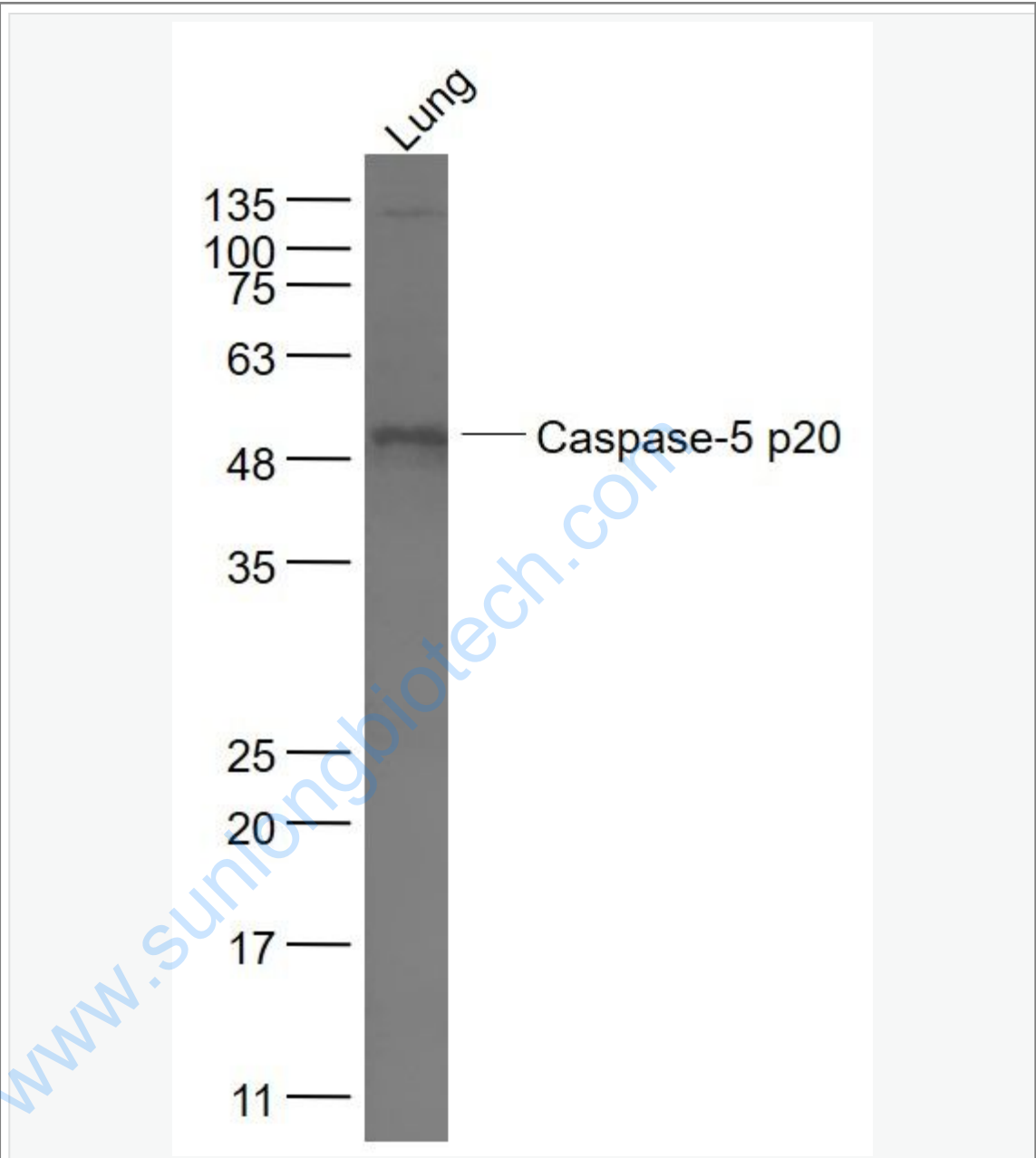
[SwissProt: P51878](#)Human

[Unigene: 213327](#)Human

Important Note:

This product as supplied is intended for research use only, not for use in human, therapeutic or diagnostic applications.

Picture:



Sample:

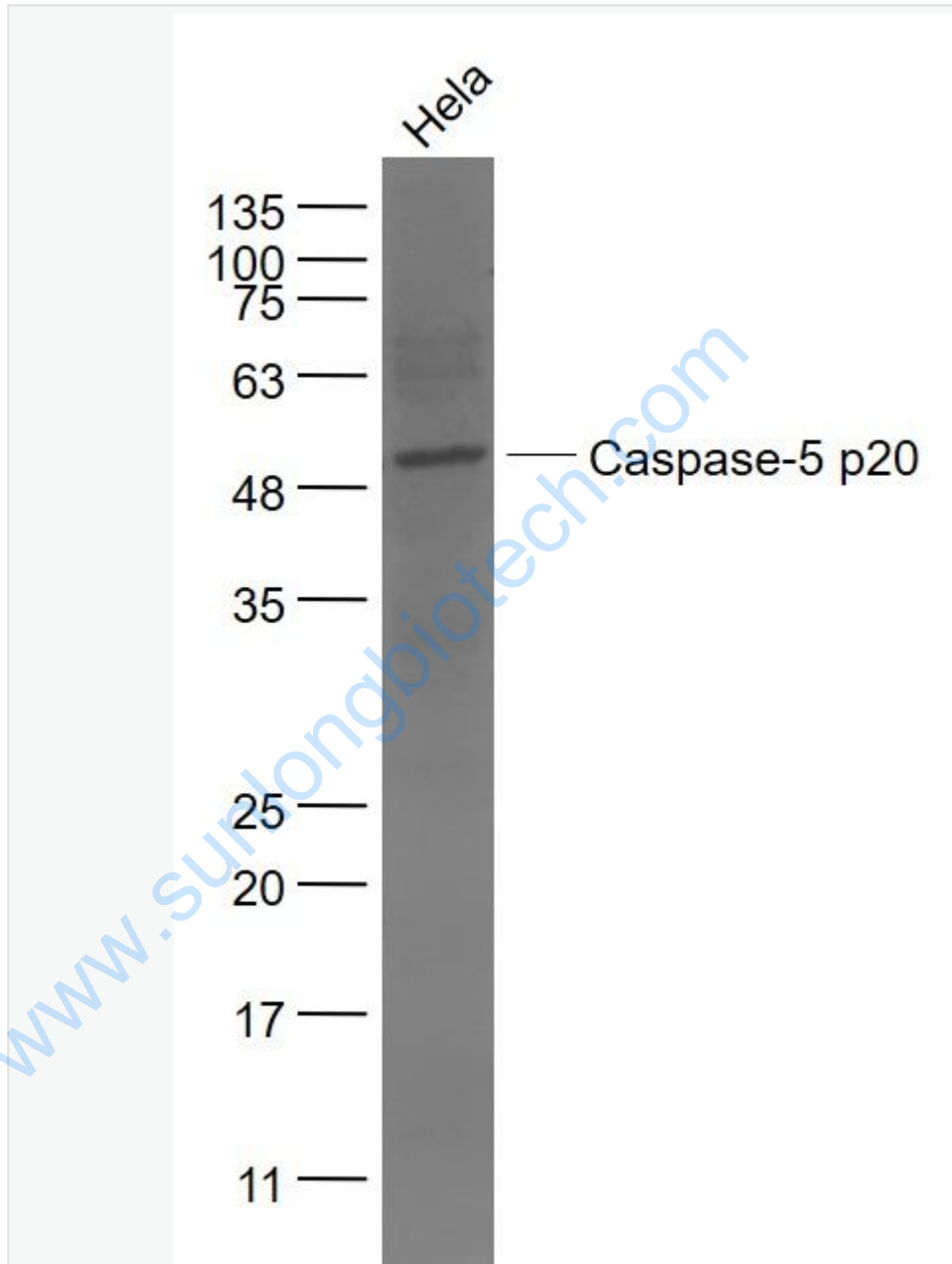
Lung (Mouse) Lysate at 40 ug

Primary: Anti- Caspase-5 p20 (SL6860R) at 1/1000 dilution

Secondary: IRDye800CW Goat Anti-Rabbit IgG at 1/20000 dilution

Predicted band size: 48 kD

Observed band size: 50 kD



Sample:

HeLa(Human) Cell Lysate at 30 ug

Primary: Anti- Caspase-5 p20 (SL6860R) at 1/1000 dilution

Secondary: IRDye800CW Goat Anti-Rabbit IgG at 1/20000 dilution

Predicted band size: 48 kD

Observed band size: 50 kD

www.sunlongbiotech.com