



Rabbit Anti-NLRP9 antibody

SL6867R

Product Name:	NLRP9
Chinese Name:	富含亮氨酸重复结构域蛋白9抗体
Alias:	LRR and PYD domains-containing protein 9; NACHT; NACHT, LRR and PYD domains-containing protein 9; NALP9_HUMAN; NLRP9; Nucleotide-binding oligomerization domain protein 6; PYRIN and NACHT-containing protein 12.
Organism Species:	Rabbit
Clonality:	Polyclonal
React Species:	Human,Mouse,Rat,
Applications:	WB=1:500-2000ELISA=1:500-1000IHC-P=1:400-800IHC-F=1:400-800IF=1:100-500 (Paraffin sections need antigen repair) not yet tested in other applications. optimal dilutions/concentrations should be determined by the end user.
Molecular weight:	109kDa
Cellular localization:	cytoplasmic
Form:	Lyophilized or Liquid
Concentration:	1mg/ml
immunogen:	KLH conjugated synthetic peptide derived from human NLRP9:701-800/991
Lsotype:	IgG
Purification:	affinity purified by Protein A
Storage Buffer:	0.01M TBS(pH7.4) with 1% BSA, 0.03% Proclin300 and 50% Glycerol.
Storage:	Store at -20 °C for one year. Avoid repeated freeze/thaw cycles. The lyophilized antibody is stable at room temperature for at least one month and for greater than a year when kept at -20°C. When reconstituted in sterile pH 7.4 0.01M PBS or diluent of antibody the antibody is stable for at least two weeks at 2-4 °C.
PubMed:	PubMed
Product Detail:	The protein encoded by this gene belongs to the NALP protein family. Members of the NALP protein family typically contain a NACHT domain, a NACHT-associated domain (NAD), a C-terminal leucine-rich repeat (LRR) region, and an N-terminal pyrin domain (PYD). This protein may play a regulatory role in the innate immune system as similar family members belong to the signal-induced multiprotein complex, the

inflammasome, that activates the pro-inflammatory caspases, caspase-1 and caspase-5. [provided by RefSeq, Jul 2008].

Function:

Involved in inflammation (Potential).

Subcellular Location:

Cytoplasm.

Similarity:

Belongs to the NLRP family.

Contains 1 DAPIN domain.

Contains 6 LRR (leucine-rich) repeats.

Contains 1 NACHT domain.

SWISS:

Q7RTR0

Gene ID:

338321

Database links:

[Entrez Gene: 338321](#)Human

[Omim: 609663](#)Human

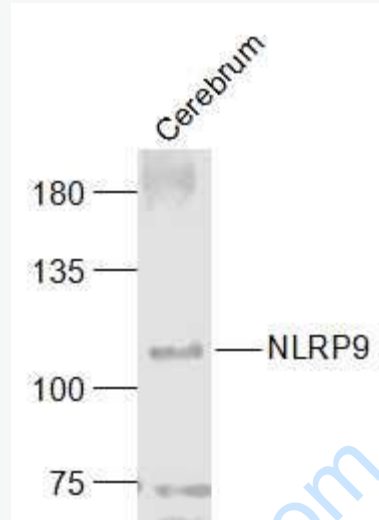
[SwissProt: Q7RTR0](#)Human

[Unigene: 661568](#)Human

Important Note:

This product as supplied is intended for research use only, not for use in human, therapeutic or diagnostic applications.

Picture:



Sample:

Cerebrum (Mouse) Lysate at 40 ug

Primary: Anti-NLRP9 (SL6867R) at 1/1000 dilution

Secondary: IRDye800CW Goat Anti-Rabbit IgG at 1/20000 dilution

Predicted band size: 109 kD

Observed band size: 109 kD