



Rabbit Anti-GMCL1L antibody

SL6892R

Product Name:	GMCL1L
Chinese Name:	生殖细胞样蛋白1样蛋白抗体
Alias:	GCL; Germ cell less homolog 1 (Drosophila) like; Germ cell less protein like 1 like; GMCL 2; GMCL2; GMCLL_HUMAN.
Organism Species:	Rabbit
Clonality:	Polyclonal
React Species:	Human,Mouse,Rat,Dog,Pig,Cow,Horse,Sheep,
Applications:	WB=1:500-2000ELISA=1:500-1000IHC-P=1:400-800IHC-F=1:400-800IF=1:100-500 (Paraffin sections need antigen repair) not yet tested in other applications. optimal dilutions/concentrations should be determined by the end user.
Molecular weight:	60kDa
Cellular localization:	The nucleus
Form:	Lyophilized or Liquid
Concentration:	1mg/ml
immunogen:	KLH conjugated synthetic peptide derived from human GMCL1L:351-450/526
Lsotype:	IgG
Purification:	affinity purified by Protein A
Storage Buffer:	0.01M TBS(pH7.4) with 1% BSA, 0.03% Proclin300 and 50% Glycerol.
Storage:	Store at -20 °C for one year. Avoid repeated freeze/thaw cycles. The lyophilized antibody is stable at room temperature for at least one month and for greater than a year when kept at -20°C. When reconstituted in sterile pH 7.4 0.01M PBS or diluent of antibody the antibody is stable for at least two weeks at 2-4 °C.
PubMed:	PubMed
Product Detail:	GMCL1L has a possible function in spermatogenesis. It enhances the degradation of MDM2 and increases the amount of p53 probably by modulating the nucleocytoplasmic transport. GMCL1L is also a probable substrate-specific adapter of an E3 ubiquitin-protein ligase complex which mediates the ubiquitination and subsequent proteasomal degradation of target proteins.

Function:

Possible function in spermatogenesis. Enhances the degradation of MDM2 and increases the amount of p53 probably by modulating the nucleocytoplasmic transport (By similarity). Probable substrate-specific adapter of an E3 ubiquitin-protein ligase complex which mediates the ubiquitination and subsequent proteasomal degradation of target proteins. [PATHWAY] Protein modification; protein ubiquitination.

Subunit:

Interacts with TMPO-Beta, TSG101 and TFDP2. Interacts with EMD (By similarity). Interacts with CUL3.

Subcellular Location:

Nucleus matrix (By similarity).

Similarity:

Contains 1 BTB (POZ) domain.

SWISS:

Q8NEA9

Gene ID:

64396

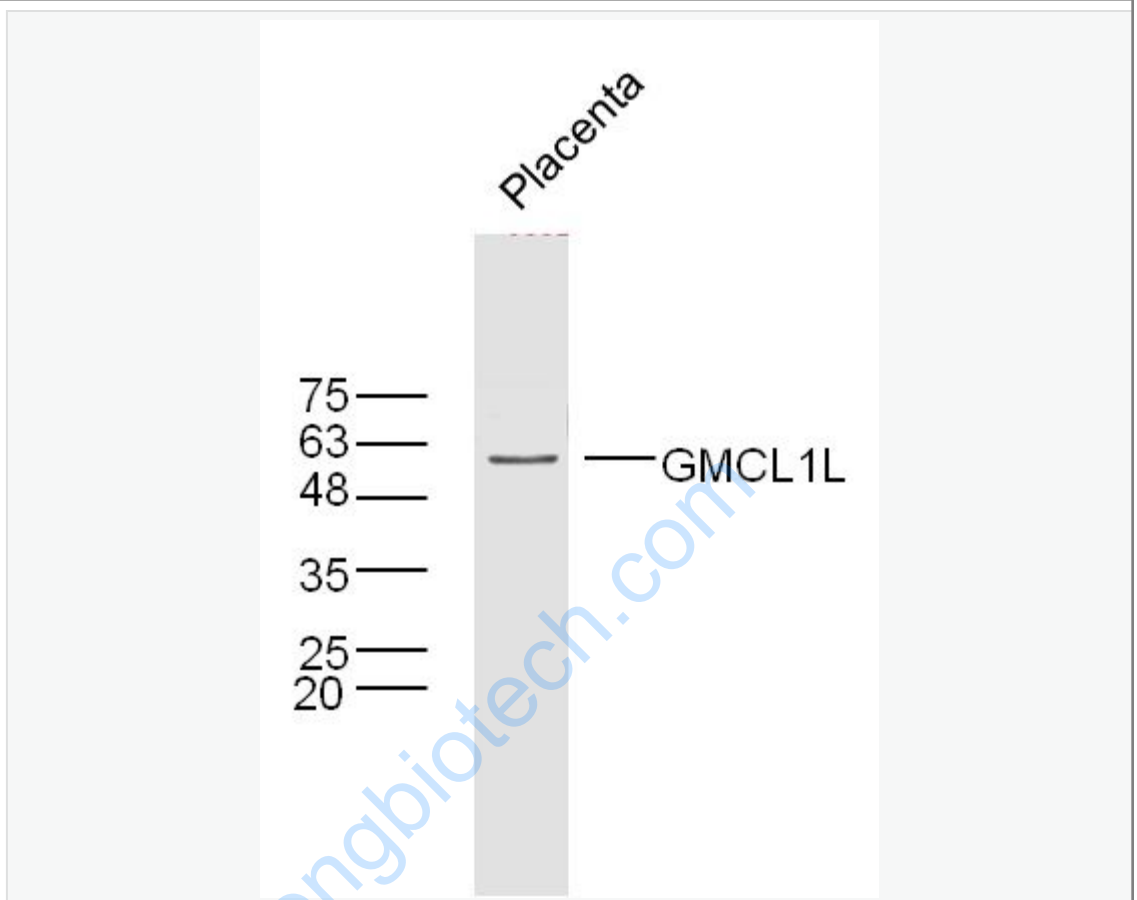
Database links:

UniProtKB/Swiss-Prot: Q8NEA9.1

Important Note:

This product as supplied is intended for research use only, not for use in human, therapeutic or diagnostic applications.

Picture:



Sample: Placenta (Mouse) Lysate at 40 ug

Primary: Anti-GMCL1L (SL6892R) at 1/300 dilution

Secondary: IRDye800CW Goat Anti-Rabbit IgG at 1/20000 dilution

Predicted band size: 60 kD

Observed band size: 60 kD