



Rabbit Anti-KLLN antibody

SL6893R

Product Name:	KLLN
Chinese Name:	Killin-p53调节复制抑制蛋白抗体
Alias:	KILIN HUMAN; Killin; killin, p53-regulated DNA replication inhibitor; KLLN.
Organism Species:	Rabbit
Clonality:	Polyclonal
React Species:	Human,
Applications:	ELISA=1:500-1000Flow-Cyt=1ug/Test not yet tested in other applications. optimal dilutions/concentrations should be determined by the end user.
Molecular weight:	20kDa
Cellular localization:	The nucleus
Form:	Lyophilized or Liquid
Concentration:	1mg/ml
immunogen:	KLH conjugated synthetic peptide derived from human KLLN:20-120/178
Isotype:	IgG
Purification:	affinity purified by Protein A
Storage Buffer:	0.01M TBS(pH7.4) with 1% BSA, 0.03% Proclin300 and 50% Glycerol.
Storage:	Store at -20 °C for one year. Avoid repeated freeze/thaw cycles. The lyophilized antibody is stable at room temperature for at least one month and for greater than a year when kept at -20°C. When reconstituted in sterile pH 7.4 0.01M PBS or diluent of antibody the antibody is stable for at least two weeks at 2-4 °C.
PubMed:	PubMed
Product Detail:	<p>DNA-binding protein involved in S phase checkpoint control-coupled apoptosis by mediating p53/TP53-induced apoptosis. Has the ability to inhibit DNA synthesis and S phase arrest coupled to apoptosis. Has affinity to both double- and single-stranded DNA.</p> <p>Function: DNA-binding protein involved in S phase checkpoint control-coupled apoptosis by mediating p53/TP53-induced apoptosis. Has the ability to inhibit DNA synthesis and S</p>

phase arrest coupled to apoptosis. Has affinity to both double- and single-stranded DNA.

Subcellular Location:

Nucleus.

SWISS:

B2CW77

Gene ID:

100144748

Database links:

[Entrez Gene: 100144748](#)Human

[Omim: 612105](#)Human

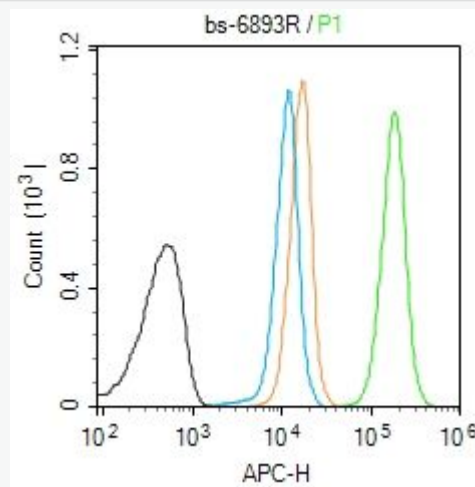
[SwissProt: B2CW77](#)Human

[Unigene: 559820](#)Human

Important Note:

This product as supplied is intended for research use only, not for use in human, therapeutic or diagnostic applications.

Picture:



Blank control (Black line): Molt4 (Black).

Primary Antibody (green line): Rabbit Anti-KLLN antibody (SL6893R)

Dilution: $1\mu\text{g} / 10^6$ cells;

Isotype Control Antibody (orange line): Rabbit IgG .

Secondary Antibody (white blue line): Goat anti-rabbit IgG-AF647

Dilution: $1\mu\text{g} / \text{test}$.

Protocol

The cells were fixed with 4% PFA (10min at room temperature) and then permeabilized with 90% ice-cold methanol for 20 min at room temperature. The cells were then incubated in 5% BSA to block non-specific protein-protein interactions for 30 min at room temperature. Cells stained with Primary Antibody for 30 min at room temperature. The secondary antibody used for 40 min at room temperature. Acquisition of 20,000 events was performed.