



Rabbit Anti-HFREP1 antibody

SL6894R

Product Name:	HFREP1
Chinese Name:	肝细胞源性纤维蛋白原相关蛋白1/FGL1抗体
Alias:	FGL 1; Fgl1; FGL1_HUMAN; Fibrinogen like 1; Fibrinogen like protein 1; Fibrinogen related protein 1; Fibrinogen-like protein 1; Hepassocin; Hepatocellular carcinoma related sequence; Hepatocyte derived fibrinogen related protein 1; Hepatocyte-derived fibrinogen-related protein 1; HFREP 1; HFREP-1; HFREP1; HP 041; HP-041; HP041; LFIRE 1; LFIRE-1; LFIRE1; Liver fibrinogen related protein 1; Liver fibrinogen-related protein 1; MFIRE 1.
Organism Species:	Rabbit
Clonality:	Polyclonal
React Species:	Human,Mouse,Rat,Cow,Horse,Sheep,
Applications:	WB=1:500-2000ELISA=1:500-1000 not yet tested in other applications. optimal dilutions/concentrations should be determined by the end user.
Molecular weight:	32kDa
Cellular localization:	Secretory protein
Form:	Lyophilized or Liquid
Concentration:	1mg/ml
immunogen:	KLH conjugated synthetic peptide derived from human HFREP1/FGL1:251-350/312
Lsotype:	IgG
Purification:	affinity purified by Protein A
Storage Buffer:	0.01M TBS(pH7.4) with 1% BSA, 0.03% Proclin300 and 50% Glycerol.
Storage:	Store at -20 °C for one year. Avoid repeated freeze/thaw cycles. The lyophilized antibody is stable at room temperature for at least one month and for greater than a year when kept at -20°C. When reconstituted in sterile pH 7.4 0.01M PBS or diluent of antibody the antibody is stable for at least two weeks at 2-4 °C.
PubMed:	PubMed
Product Detail:	Fibrinogen-like 1 is a member of the fibrinogen family. This protein is homologous to the carboxy terminus of the fibrinogen beta- and gamma- subunits which contains the four conserved cysteines of fibrinogens and fibrinogen related proteins. However, this

protein lacks the platelet-binding site, cross-linking region and a thrombin-sensitive site which are necessary for fibrin clot formation. This protein may play a role in the development of hepatocellular carcinomas. Four alternatively spliced transcript variants encoding the same protein exist for this gene. [provided by RefSeq, Jul 2008].

Function:

Has hepatocyte mitogenic activity.

Subunit:

Homodimer (Probable).

Subcellular Location:

Secreted.

Tissue Specificity:

Liver specific.

Similarity:

Contains 1 fibrinogen C-terminal domain.

SWISS:

Q08830

Gene ID:

2267

Database links:

[Entrez Gene: 508090](#)Cow

[Entrez Gene: 2267](#)Human

[Entrez Gene: 234199](#)Mouse

[Entrez Gene: 246186](#)Rat

[Omim: 605776](#)Human

[SwissProt: Q3SZZ7](#)Cow

[SwissProt: Q08830](#)Human

[SwissProt: Q71KU9](#)Mouse

[SwissProt: Q5M8C6](#)Rat

[Unigene: 491143](#)Human

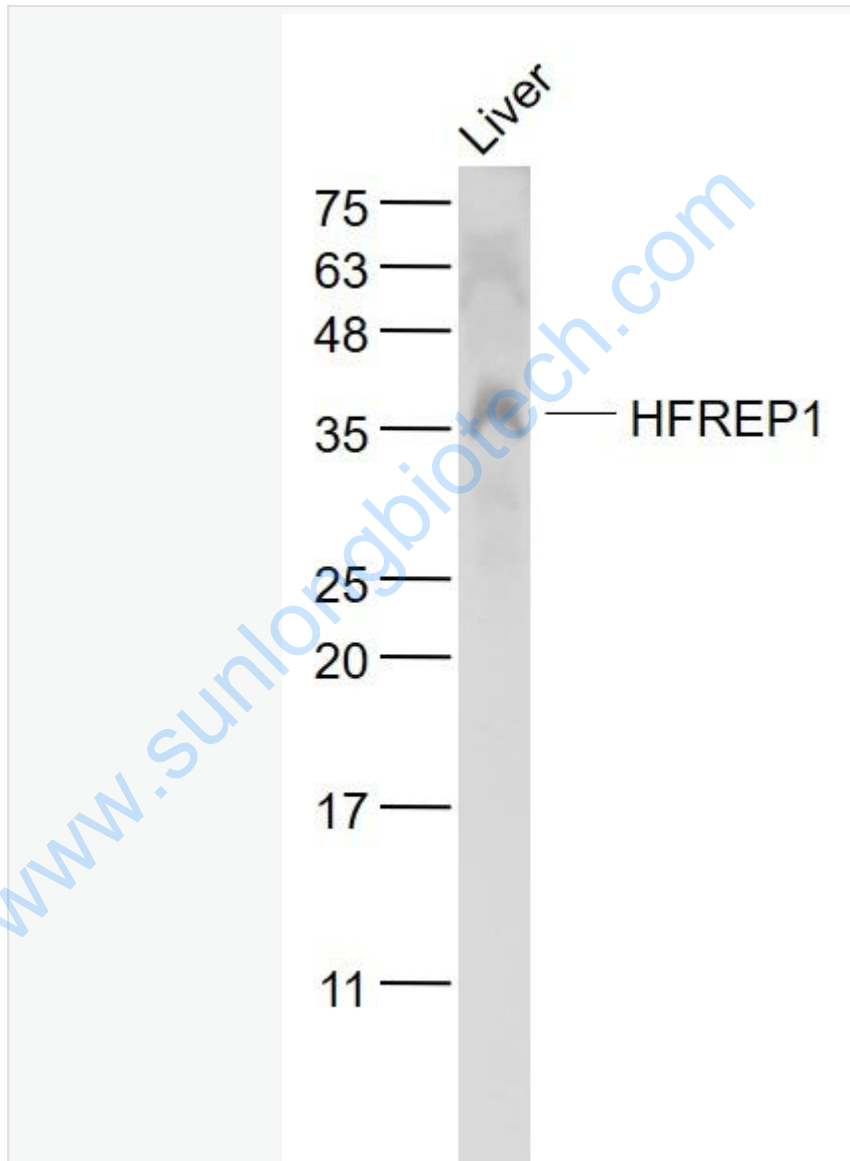
[Unigene: 277955](#)Mouse

[Unigene: 15994](#)Rat

Important Note:

This product as supplied is intended for research use only, not for use in human, therapeutic or diagnostic applications.

Picture:



Sample:

Liver (Mouse) Lysate at 40 ug

Primary: Anti- HFREP1 (SL6894R) at 1/1000 dilution

Secondary: IRDye800CW Goat Anti-Rabbit IgG at 1/20000 dilution

Predicted band size: 32 kD

Observed band size: 35 kD

www.sunlongbiotech.com