



## Rabbit Anti-BMP9 antibody

SL6909R

<b>Product Name:</b>	BMP9
<b>Chinese Name:</b>	骨形态发生蛋白9抗体
<b>Alias:</b>	BMP 9; BMP-9; Bone morphogenetic protein 9; GDF 2; GDF2; GDF-2; growth differentiation factor 2; GDF2_HUMAN.
<b>Organism Species:</b>	Rabbit
<b>Clonality:</b>	Polyclonal
<b>React Species:</b>	Human,Mouse,Rat,Rabbit,
<b>Applications:</b>	WB=1:500-2000ELISA=1:500-1000IHC-P=1:400-800IHC-F=1:400-800IF=1:100-500 (Paraffin sections need antigen repair) not yet tested in other applications. optimal dilutions/concentrations should be determined by the end user.
<b>Molecular weight:</b>	12/47kDa
<b>Cellular localization:</b>	Secretory protein
<b>Form:</b>	Lyophilized or Liquid
<b>Concentration:</b>	1mg/ml
<b>immunogen:</b>	KLH conjugated synthetic peptide derived from human BMP9:351-429/429
<b>Lsotype:</b>	IgG
<b>Purification:</b>	affinity purified by Protein A
<b>Storage Buffer:</b>	0.01M TBS(pH7.4) with 1% BSA, 0.03% Proclin300 and 50% Glycerol.
<b>Storage:</b>	Store at -20 °C for one year. Avoid repeated freeze/thaw cycles. The lyophilized antibody is stable at room temperature for at least one month and for greater than a year when kept at -20°C. When reconstituted in sterile pH 7.4 0.01M PBS or diluent of antibody the antibody is stable for at least two weeks at 2-4 °C.
<b>PubMed:</b>	<a href="#">PubMed</a>
<b>Product Detail:</b>	The protein encoded by this gene is a member of the bone morphogenetic protein (BMP) family and the TGF-beta superfamily. This group of proteins is characterized by a polybasic proteolytic processing site which is cleaved to produce a mature protein containing seven conserved cysteine residues. The members of this family are regulators of cell growth and differentiation in both embryonic and adult tissues. Studies in rodents suggest that this protein plays a role in the adult liver and in differentiation of

cholinergic central nervous system neurons. [provided by RefSeq, Jul 2008].

**Function:**

Could be involved in bone formation.

**Subunit:**

Homodimer; disulfide-linked.

**Subcellular Location:**

Secreted.

**Similarity:**

Belongs to the TGF-beta family.

**SWISS:**

Q9UK05

**Gene ID:**

2658

**Database links:**

[Entrez Gene: 2658](#)Human

[Entrez Gene: 12165](#)Mouse

[Entrez Gene: 290921](#)Rat

[Omim: 605120](#)Human

[SwissProt: Q9UK05](#)Human

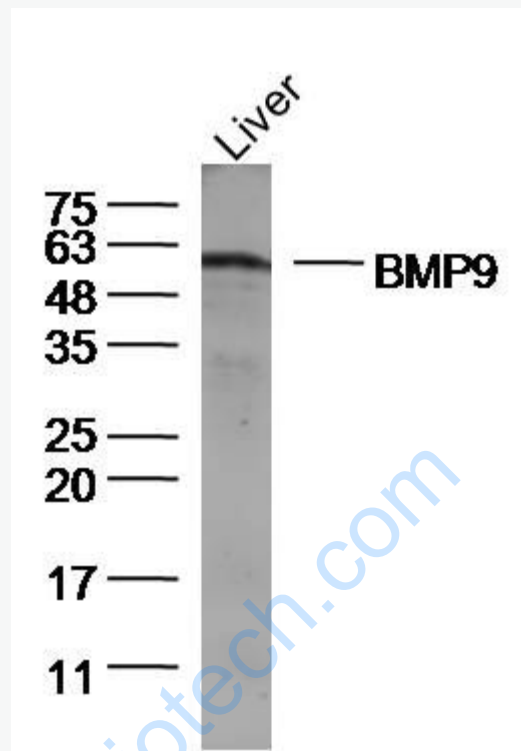
[SwissProt: Q9WV56](#)Mouse

[Unigene: 218418](#)Rat

**Important Note:**

This product as supplied is intended for research use only, not for use in human, therapeutic or diagnostic applications.

Picture:



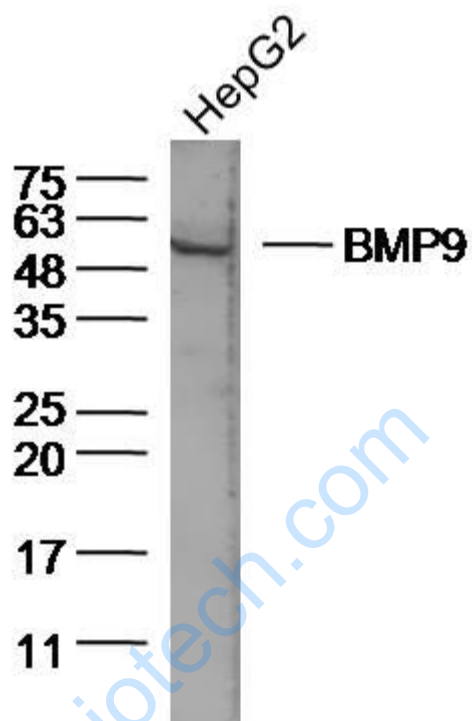
Sample: Liver (Mouse) Lysate at 40 ug

Primary: Anti-BMP9 (SL6909R) at 1/300 dilution

Secondary: IRDye800CW Goat Anti-Rabbit IgG at 1/20000 dilution

Predicted band size: 12/47 kD

Observed band size: 50 kD



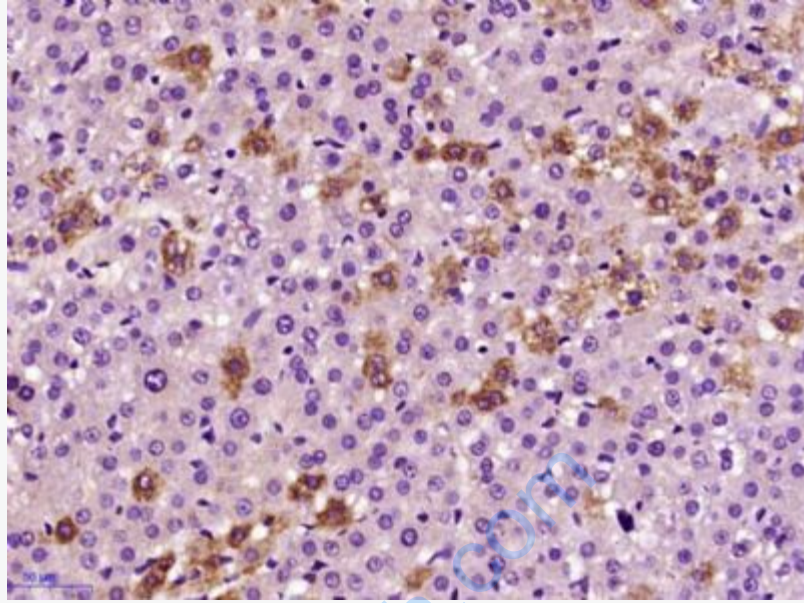
Sample: HepG2 Cell (Human) Lysate at 40 ug

Primary: Anti-BMP9 (SL6909R) at 1/300 dilution

Secondary: IRDye800CW Goat Anti-Rabbit IgG at 1/20000 dilution

Predicted band size: 12/47 kD

Observed band size: 50 kD



Paraformaldehyde-fixed, paraffin embedded (Rat liver); Antigen retrieval by boiling in sodium citrate buffer (pH6.0) for 15min; Block endogenous peroxidase by 3% hydrogen peroxide for 20 minutes; Blocking buffer (normal goat serum) at 37°C for 30min; Antibody incubation with (BMP9) Polyclonal Antibody, Unconjugated (SL6909R) at 1:400 overnight at 4°C, followed by operating according to SP Kit(Rabbit) (sp-0023) instructions and DAB staining.