



Rabbit Anti-KDEL antibody

SL6940R

Product Name:	KDEL
Chinese Name:	赖氨酸, 天冬氨酸, 谷氨酸, 亮氨酸相关序列抗体
Alias:	KDEL; Lys Asp Glu Leu antibody; Lys-Asp-Glu-Leu.
Organism Species:	Rabbit
Clonality:	Polyclonal
React Species:	Human,Mouse,Rat,Dog,Pig,Cow,Rabbit,Guinea Pig,
Applications:	ELISA=1:500-1000IHC-P=1:400-800IHC-F=1:400-800Flow-Cyt=2ug/testIF=1:100-500 (Paraffin sections need antigen repair) not yet tested in other applications. optimal dilutions/concentrations should be determined by the end user.
Molecular weight:	78kDa
Cellular localization:	cytoplasmic
Form:	Lyophilized or Liquid
Concentration:	1mg/ml
immunogen:	KLH conjugated synthetic peptide KDEL:
Lsotype:	IgG
Purification:	affinity purified by Protein A
Storage Buffer:	0.01M TBS(pH7.4) with 1% BSA, 0.03% Proclin300 and 50% Glycerol.
Storage:	Store at -20 °C for one year. Avoid repeated freeze/thaw cycles. The lyophilized antibody is stable at room temperature for at least one month and for greater than a year when kept at -20°C. When reconstituted in sterile pH 7.4 0.01M PBS or diluent of antibody the antibody is stable for at least two weeks at 2-4 °C.
PubMed:	PubMed
Product Detail:	Endoplasmic reticulum Marker. The sequence Lys-Asp-Glu-Leu (KDEL) or a closely related sequence, is present at the carboxy-terminus of soluble endoplasmic reticulum (ER) resident proteins and some membrane proteins. 78 and 94 kDa glucose regulated proteins (GRP 78) and GRP 94 respectively and protein disulfide isomerase (PDI) all share the C-terminal KDEL sequence. The presence of carboxy-terminal KDEL appears to be necessary for ER retention and appears to be sufficient to reduce the secretion of proteins from the ER.

This retention is reported to be mediated by a KDEL receptor.

Subunit:

Interacts with DNAJC1 (via J domain). Component of an EIF2 complex at least composed of CELF1/CUGBP1, CALR, CALR3, EIF2S1, EIF2S2, HSP90B1 and HSPA5. Part a large chaperone multiprotein complex comprising DNAJB11, HSP90B1, HSPA5, HYOU, PDIA2, PDIA4, PDIA6, PPIB, SDF2L1, UGT1A1 and very small amounts of ERP29, but not, or at very low levels, CALR nor CANX. Interacts with TMEM132A and TRIM21. May form a complex with ERLEC1, OS9, SEL1L and SYVN1.

Subcellular Location:

Endoplasmic reticulum.

DISEASE:

Note=Autoantigen in rheumatoid arthritis.

Similarity:

Belongs to the heat shock protein 70 family.

SWISS:

Q6UW63

Gene ID:

79070

Database links:

[Entrez Gene: 79070](#)Human

[Entrez Gene: 72050](#)Mouse

[Entrez Gene: 316370](#)Rat

[Ommim: 611613](#)Human

[SwissProt: Q6UW63](#)Human

[SwissProt: Q9JHP7](#)Mouse

[SwissProt: B5DFA5](#)Rat

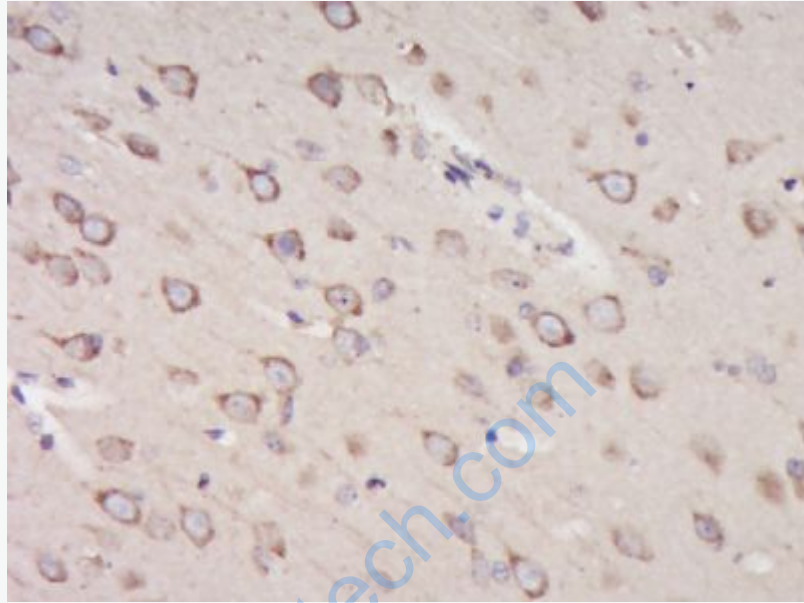
[Unigene: 408629](#)Human

[Unigene: 281714](#)Mouse

Important Note:

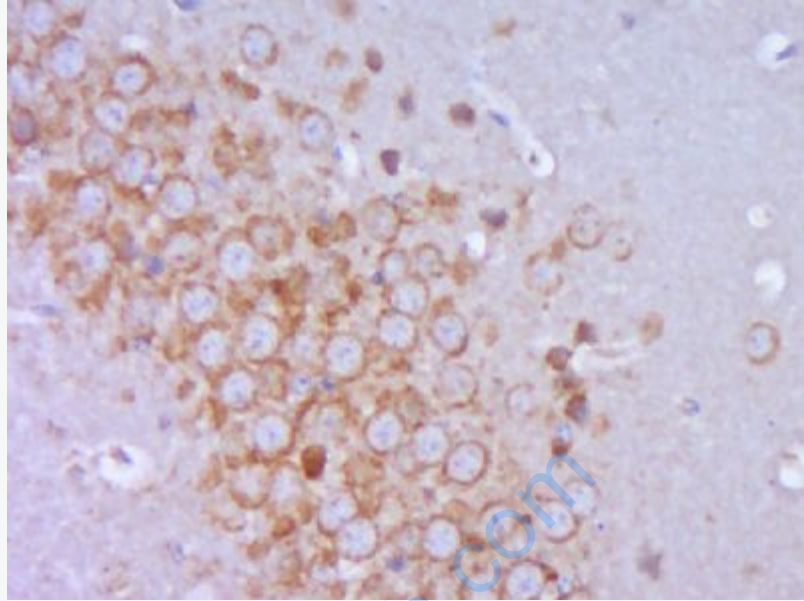
This product as supplied is intended for research use only, not for use in human, therapeutic or diagnostic applications.

内质网Marker。



Picture:

Paraformaldehyde-fixed, paraffin embedded (Rat brain); Antigen retrieval by boiling in sodium citrate buffer (pH6.0) for 15min; Block endogenous peroxidase by 3% hydrogen peroxide for 20 minutes; Blocking buffer (normal goat serum) at 37°C for 30min; Antibody incubation with (KDEL) Polyclonal Antibody, Unconjugated (SL6940R) at 1:400 overnight at 4°C, followed by operating according to SP Kit(Rabbit) (sp-0023) instructions and DAB staining.



Paraformaldehyde-fixed, paraffin embedded (Mouse brain); Antigen retrieval by boiling in sodium citrate buffer (pH6.0) for 15min; Block endogenous peroxidase by 3% hydrogen peroxide for 20 minutes; Blocking buffer (normal goat serum) at 37°C for 30min; Antibody incubation with (KDEL) Polyclonal Antibody, Unconjugated (SL6940R) at 1:400 overnight at 4°C, followed by operating according to SP Kit(Rabbit) (sp-0023) instructions and DAB staining.