



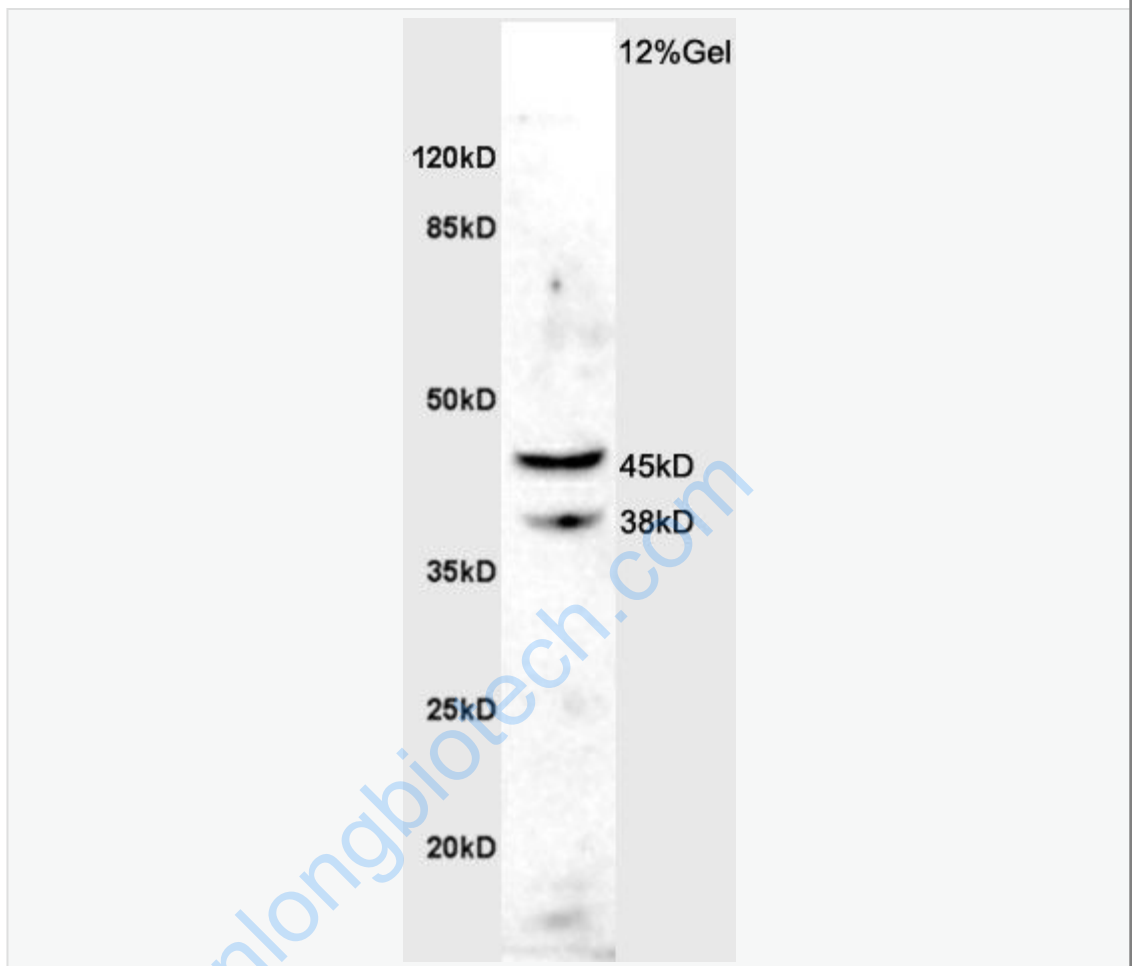
Rabbit Anti-ASMTY antibody

SL6961R

Product Name:	ASMTY
Chinese Name:	松果体N甲基乙酰羟色胺抗体
Alias:	acetylserotonin methyltransferase (Y chromosome); acetylserotonin N-methyltransferase; Acetylserotonin O-methyltransferase; ASMT; ASMTY; HIOM_HUMAN; HIOMT; HIOMTY; Hydroxyindole O-methyltransferase.
文献引用 PubMed :	<p>Specific References(2) SL6961R has been referenced in 2 publications.</p> <p>[IF=2.71]Herman, A. P., et al. "Interleukin-1β Modulates Melatonin Secretion in Ovine Pineal Gland: Ex Vivo Study." BioMed Research International (2015).WB;Other Species. PubMed:26339621</p> <p>[IF=3.24]Herman, A. P., et al. "Central Interleukin-1β Suppresses the Nocturnal Secretion of Melatonin." Mediators of Inflammation 2016 (2016).WB;Others. PubMed:27212805</p>
Organism Species:	Rabbit
Clonality:	Polyclonal
React Species:	Human,Mouse,Rat,Dog,Cow,Horse,Sheep,
Applications:	WB=1:500-2000ELISA=1:500-1000IHC-P=1:400-800IHC-F=1:400-800IF=1:100-500 (Paraffin sections need antigen repair) not yet tested in other applications. optimal dilutions/concentrations should be determined by the end user.
Molecular weight:	38kDa
Cellular localization:	cytoplasmic
Form:	Lyophilized or Liquid
Concentration:	1mg/ml
immunogen:	KLH conjugated synthetic peptide derived from human Dopamine transporter:241-345/345

Lsotype:	IgG
Purification:	affinity purified by Protein A
Storage Buffer:	0.01M TBS(pH7.4) with 1% BSA, 0.03% Proclin300 and 50% Glycerol.
Storage:	Store at -20 °C for one year. Avoid repeated freeze/thaw cycles. The lyophilized antibody is stable at room temperature for at least one month and for greater than a year when kept at -20°C. When reconstituted in sterile pH 7.4 0.01M PBS or diluent of antibody the antibody is stable for at least two weeks at 2-4 °C.
PubMed:	PubMed
Product Detail:	<p>Most abundant in pineal gland, less in retina and brain, not in pigment epithelium.</p> <p>Function: Produces melatonin (N-acetyl-5-methoxytryptamine) from N-acetylserotonin.</p> <p>Tissue Specificity: Expressed in the pineal gland (at protein level). In the retina, very low expression is found at the mRNA level (PubMed:7989373), and not at the protein level (PubMed:8574683).</p> <p>Similarity: Belongs to the methyltransferase superfamily.</p> <p>SWISS: P46597</p> <p>Gene ID: 438</p> <p>Database links: UniProtKB/Swiss-Prot: P46597.1</p> <p>Important Note: This product as supplied is intended for research use only, not for use in human, therapeutic or diagnostic applications.</p>

Picture:



Sample: Brain (Rat) Lysate at 40 ug

Primary: Anti- ASMTY (SL6961R) at 1/300 dilution

Secondary: HRP conjugated Goat-Anti-rabbit IgG (SL6961R) at 1/5000 dilution

Predicted band size: 38 kD

Observed band size: 38/45 kD