



Rabbit Anti-LPAP antibody

SL6963R

Product Name:	LPAP
Chinese Name:	lymphocyte磷蛋白磷酸酶相关蛋白抗体
Alias:	PTPRCAP: LPAP: LyPAP: Mature chain: Variant: Lymphocyte Phosphatase-Associated Phosphoprotein; PTCA_HUMAN.
Organism Species:	Rabbit
Clonality:	Polyclonal
React Species:	Human,Mouse,Rat,Dog,Pig,Cow,Sheep,
Applications:	ELISA=1:500-1000IHC-P=1:400-800IHC-F=1:400-800Flow-Cyt=2µg/TestIF=1:100-500 (Paraffin sections need antigen repair) not yet tested in other applications. optimal dilutions/concentrations should be determined by the end user.
Molecular weight:	23kDa
Cellular localization:	The cell membrane
Form:	Lyophilized or Liquid
Concentration:	1mg/ml
immunogen:	KLH conjugated synthetic peptide derived from human LPAP:125-206/206
Lsotype:	IgG
Purification:	affinity purified by Protein A
Storage Buffer:	0.01M TBS(pH7.4) with 1% BSA, 0.03% Proclin300 and 50% Glycerol.
Storage:	Store at -20 °C for one year. Avoid repeated freeze/thaw cycles. The lyophilized antibody is stable at room temperature for at least one month and for greater than a year when kept at -20°C. When reconstituted in sterile pH 7.4 0.01M PBS or diluent of antibody the antibody is stable for at least two weeks at 2-4 °C.
PubMed:	PubMed
Product Detail:	Lymphocyte phosphatase-associate Phosphoprotein (LPAP) is a transmembrane phosphoprotein of 32 kD, which is only stable when expressed in the presence of the CD45 glycoprotein. It is expressed on both resting and activated T and B lymphocyte, NK cells and thymocytes. Terminally differentiated plasma cells, granulocytes and monocytes do not express LPAP.

Subunit:

Interacts with CD45/PTPRC.

Subcellular Location:

Membrane; Single-pass membrane protein (Potential).

Post-translational modifications:

Phosphorylated on tyrosine residues.

SWISS:

Q14761

Gene ID:

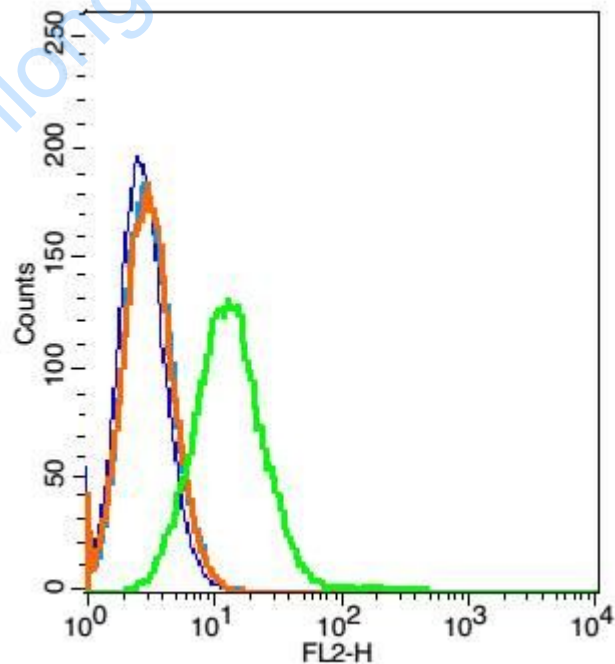
51205

Database links:

UniProtKB/Swiss-Prot: Q14761.1

Important Note:

This product as supplied is intended for research use only, not for use in human, therapeutic or diagnostic applications.

Picture:

Blank control: Raji(blue).

Primary Antibody: Rabbit Anti-LPAP antibody(SL6963R), Dilution: 5 μ g in 100 μ L

1X PBS containing 0.5% BSA;

Isotype Control Antibody: Rabbit IgG (orange) ,used under the same conditions.

Secondary Antibody: Goat anti-rabbit IgG-PE(white blue), Dilution: 1:200 in 1 X

PBS containing 0.5% BSA.

www.sunlongbiotech.com