



## Rabbit Anti-HLA DM antibody

SL6968R

<b>Product Name:</b>	HLA DM
<b>Chinese Name:</b>	组织相容性复合体 $\alpha$ 抗体
<b>Alias:</b>	Class II histocompatibility antigen M alpha chain; D6S222E; DMA; HLA class II histocompatibility antigen DM alpha chain; HLA DMA; HLADM; Major histocompatibility complex class II DM alpha; MHC class II antigen DMA; Really interesting new gene 6 protein; Ring 6; Ring6; DMA_HUMAN.
<b>Organism Species:</b>	Rabbit
<b>Clonality:</b>	Polyclonal
<b>React Species:</b>	Human,Mouse,Rat,Dog,Pig,Cow,Horse,
<b>Applications:</b>	WB=1:500-2000ELISA=1:500-1000IHC-P=1:400-800IHC-F=1:400-800IF=1:50-200 (Paraffin sections need antigen repair) not yet tested in other applications. optimal dilutions/concentrations should be determined by the end user.
<b>Molecular weight:</b>	26kDa
<b>Cellular localization:</b>	cytoplasmicThe cell membrane
<b>Form:</b>	Lyophilized or Liquid
<b>Concentration:</b>	1mg/ml
<b>immunogen:</b>	KLH conjugated synthetic peptide derived from human HLA DM:101-200/261
<b>Lsotype:</b>	IgG
<b>Purification:</b>	affinity purified by Protein A
<b>Storage Buffer:</b>	0.01M TBS(pH7.4) with 1% BSA, 0.03% Proclin300 and 50% Glycerol.
<b>Storage:</b>	Store at -20 °C for one year. Avoid repeated freeze/thaw cycles. The lyophilized antibody is stable at room temperature for at least one month and for greater than a year when kept at -20°C. When reconstituted in sterile pH 7.4 0.01M PBS or diluent of antibody the antibody is stable for at least two weeks at 2-4 °C.
<b>PubMed:</b>	<a href="#">PubMed</a>
<b>Product Detail:</b>	Human Leukocyte Antigens are highly polymorphic proteins that are involved in the presentation of antigens to the T-cell receptor. There are two classes of HLA antigens, class I (HLA-A, HLA-B and HLA-C) and class II (HLA-D). This antibody can be used for HLA typing. HLA DM plays a critical role in catalyzing the release of class II HLA-

associated invariant chain-derived peptides (CLIP) from newly synthesized class II HLA molecules and freeing the peptide binding site for acquisition of antigenic peptides.

**Subunit:**

Heterodimer of an alpha chain (DMA) and a beta chain (DMB).

**Subcellular Location:**

Late endosome membrane; Single-pass type I membrane protein. Lysosome membrane; Single-pass type I membrane protein.

**Similarity:**

Belongs to the MHC class II family.

Contains 1 Ig-like C1-type (immunoglobulin-like) domain.

**SWISS:**

P28067

**Gene ID:**

3108

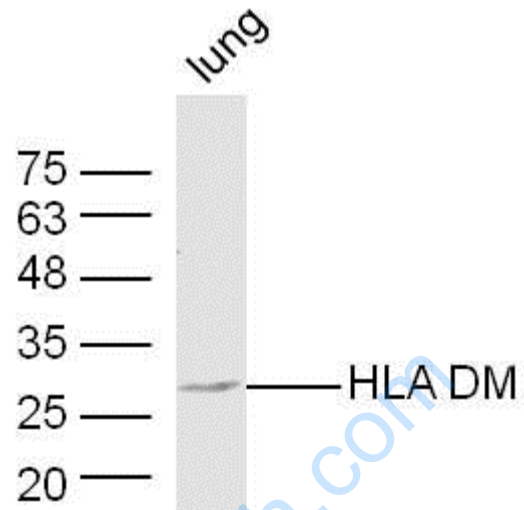
**Database links:**

UniProtKB/Swiss-Prot: P28067.1

**Important Note:**

This product as supplied is intended for research use only, not for use in human, therapeutic or diagnostic applications.

Picture:



Sample: Lung (Mouse) Lysate at 40 ug

Primary: Anti-HLA DM (SL6968R) at 1/300 dilution

Secondary: IRDye800CW Goat Anti-Rabbit IgG at 1/20000 dilution

Predicted band size: 26 kD

Observed band size: 26 kD