



Rabbit Anti-Phospholipase C beta 1 antibody

SL6976R

Product Name:	Phospholipase C beta 1
Chinese Name:	磷脂酶Cβ1抗体
Alias:	1-phosphatidylinositol-45-bisphosphate phosphodiesterase beta 1; 1-phosphatidylinositol 4,5 bisphosphate phosphodiesterase beta 1 ; Phosphb; Phosphoinositide phospholipase C; Phosphoinositide phospholipase C-beta 1; Phospholipase C beta 1 (phosphoinositide-specific); Phospholipase C I; PI PLC; PLC 1; PLCβ1; PLC-154; PLC-beta-1; PLC-I; PLC154; Plcb; PLCB1; Plcb1 protein; PLCbeta1.
Organism Species:	Rabbit
Clonality:	Polyclonal
React Species:	Human,Mouse,Rat,Chicken,Dog,Cow,Horse,
Applications:	WB=1:500-2000ELISA=1:500-1000IHC-P=1:400-800IHC-F=1:400-800Flow- Cyt=1μg/TestIF=1:50-200 (Paraffin sections need antigen repair) not yet tested in other applications. optimal dilutions/concentrations should be determined by the end user.
Molecular weight:	134kDa
Cellular localization:	The nucleuscytoplasmicThe cell membrane
Form:	Lyophilized or Liquid
Concentration:	1mg/ml
immunogen:	KLH conjugated synthetic peptide derived from human Phospholipase C beta 1:441-5401216
Lsotype:	IgG
Purification:	affinity purified by Protein A
Storage Buffer:	0.01M TBS(pH7.4) with 1% BSA, 0.03% Proclin300 and 50% Glycerol.
Storage:	Store at -20 °C for one year. Avoid repeated freeze/thaw cycles. The lyophilized antibody is stable at room temperature for at least one month and for greater than a year when kept at -20°C. When reconstituted in sterile pH 7.4 0.01M PBS or diluent of antibody the antibody is stable for at least two weeks at 2-4 °C.
PubMed:	PubMed
Product Detail:	Phospholipase C beta 1 catalyzes the formation of inositol 1,4,5-trisphosphate and diacylglycerol from phosphatidylinositol 4,5-bisphosphate. This reaction uses calcium as

a cofactor and plays an important role in the intracellular transduction of many extracellular signals. Its gene is activated by two G-protein alpha subunits, alpha-q and alpha-11. Two transcript variants encoding different isoforms have been found for its gene.

Function:

The production of the second messenger molecules diacylglycerol (DAG) and inositol 1,4,5-trisphosphate (IP3) is mediated by activated phosphatidylinositol-specific phospholipase C enzymes.

Subunit:

Interacts with DGKQ.

Subcellular Location:

Cytoplasmic and Nuclear.

DISEASE:

Defects in PLCB1 are the cause of epileptic encephalopathy early infantile type 12 (EIEE12) [MIM:613722]. EIEE12 is a form of epilepsy characterized by frequent tonic seizures or spasms beginning in infancy with a specific EEG finding of suppression-burst patterns, characterized by high-voltage bursts alternating with almost flat suppression phases. Patients may progress to West syndrome, which is characterized by tonic spasms with clustering, arrest of psychomotor development, and hypsarrhythmia on EEG.

Similarity:

Contains 1 C2 domain.

Contains 1 PI-PLC X-box domain.

Contains 1 PI-PLC Y-box domain.

SWISS:

Q9NQ66

Gene ID:

23236

Database links:

[Entrez Gene: 23236](#) Human

[Entrez Gene: 18795](#) Mouse

[Entrez Gene: 24654](#) Rat

[Omim: 607120](#) Human

[SwissProt: Q9NQ66](#) Human

[SwissProt: Q9Z1B3](#) Mouse

[SwissProt: P10687](#) Rat

[Unigene: 431173](#) Human

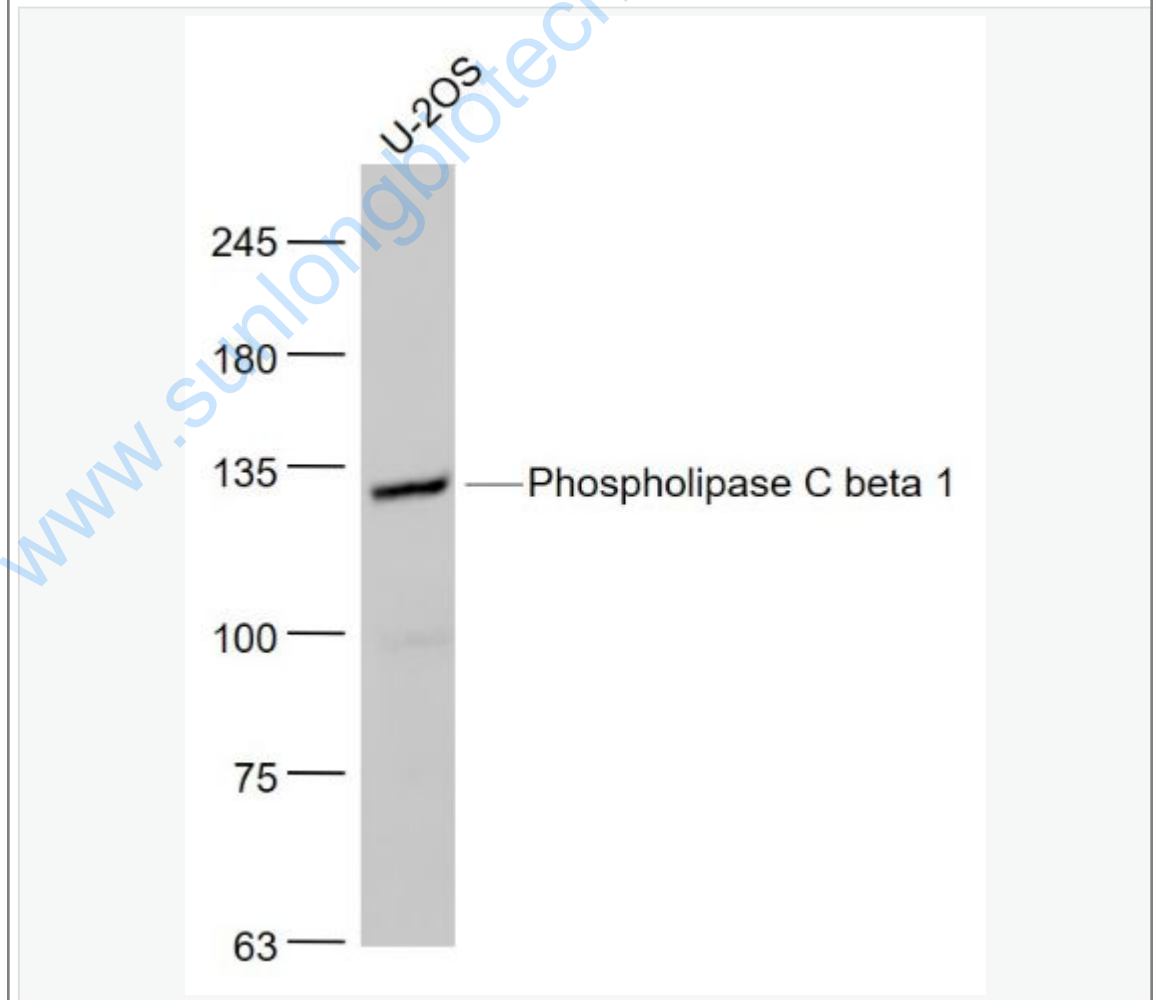
[Unigene: 330607](#) Mouse

[Unigene: 45523](#) Rat

Important Note:

This product as supplied is intended for research use only, not for use in human, therapeutic or diagnostic applications.

Picture:



Sample:

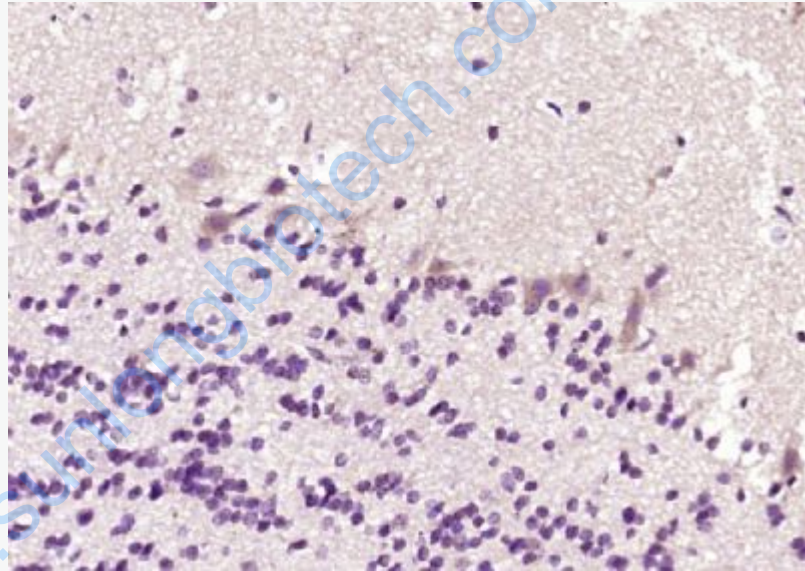
U-2OS(Human) Cell Lysate at 30 ug

Primary: Anti- Phospholipase C beta 1 (SL6976R) at 1/1000 dilution

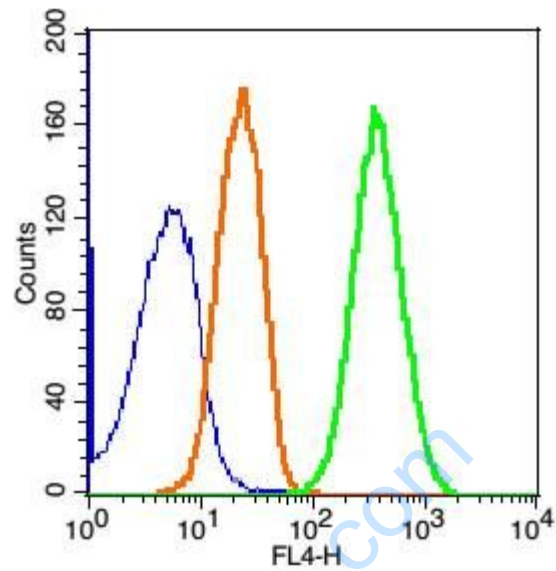
Secondary: IRDye800CW Goat Anti-Rabbit IgG at 1/20000 dilution

Predicted band size: 134 kD

Observed band size: 134 kD



Paraformaldehyde-fixed, paraffin embedded (rat brain); Antigen retrieval by boiling in sodium citrate buffer (pH6.0) for 15min; Block endogenous peroxidase by 3% hydrogen peroxide for 20 minutes; Blocking buffer (normal goat serum) at 37°C for 30min; Antibody incubation with (Phospholipase C beta 1) Polyclonal Antibody, Unconjugated (SL6976R) at 1:200 overnight at 4°C, followed by operating according to SP Kit(Rabbit) (sp-0023) instructions and DAB staining.



Blank control(blue): Hela Cells(fixed with 2% paraformaldehyde (10 min) and then permeabilized with ice-cold 90% methanol for 30 min on ice).

Primary Antibody: Rabbit Anti-Phospholipase C beta 2/AF647 Conjugated antibody (SL6976R), Dilution: 1 μ g in 100 μ L 1X PBS containing 0.5% BSA;

Isotype Control Antibody: Rabbit IgG/AF647(orange) ,used under the same conditions.