

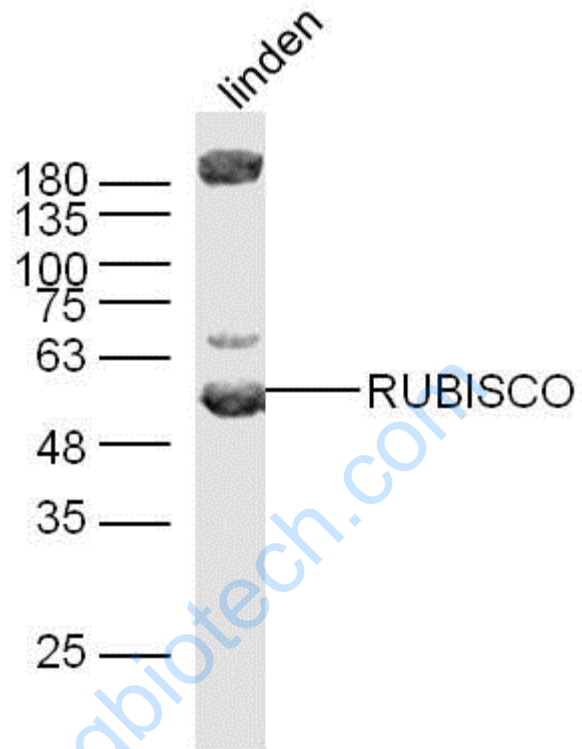


Rabbit Anti-RuBisCO large subunit antibody

SL6988R

| | |
|-------------------------------|---|
| Product Name: | RuBisCO large subunit |
| Chinese Name: | 核酮糖 1,5-二磷酸羧化酶/二磷酸核酮糖盐羧化酶大链抗体 |
| Alias: | rbcl; RBL_SPIOL; Ribulose biphosphate carboxylase large chain; RuBisCO-large subunit; ribulose-1,5-bisphosphate carboxylase/oxygenase large subunit; ribulose-1,5-bisphosphate carboxylase/oxygenase large subunit (chloroplast) [Arabidopsis lyrata]. |
| Organism Species: | Rabbit |
| Clonality: | Polyclonal |
| React Species: | Arabidopsis Thaliana, |
| Applications: | WB=1:500-1000ELISA=1:500-1000IHC-F=1:400-800IF=1:50-200 (Paraffin sections need antigen repair) not yet tested in other applications. optimal dilutions/concentrations should be determined by the end user. |
| Molecular weight: | 52kDa |
| Cellular localization: | cytoplasmic |
| Form: | Lyophilized or Liquid |
| Concentration: | 1mg/ml |
| immunogen: | KLH conjugated synthetic peptide derived from Arabidopsis thaliana Rubisco:151-250/475 |
| Lsotype: | IgG |
| Purification: | affinity purified by Protein A |
| Storage Buffer: | 0.01M TBS(pH7.4) with 1% BSA, 0.03% Proclin300 and 50% Glycerol. |
| Storage: | Store at -20 °C for one year. Avoid repeated freeze/thaw cycles. The lyophilized antibody is stable at room temperature for at least one month and for greater than a year when kept at -20°C. When reconstituted in sterile pH 7.4 0.01M PBS or diluent of antibody the antibody is stable for at least two weeks at 2-4 °C. |
| PubMed: | PubMed |
| Product Detail: | |

Picture:



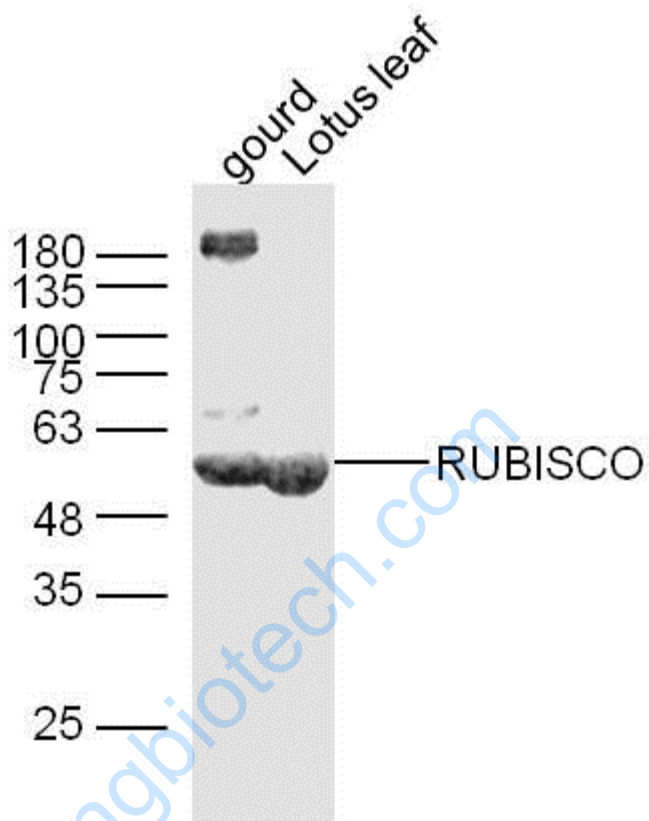
Sample: Linden Lysate at 40 ug

Primary: Anti-RUBISCO (SL6988R) at 1/300 dilution

Secondary: IRDye800CW Goat Anti-Rabbit IgG at 1/20000 dilution

Predicted band size: 52kD

Observed band size: 52 kD



Sample:

Gourd leaf Lysate at 40 ug

Lotus leaf Lysate at 40 ug

Primary: Anti-RUBISCO (SL6988R) at 1/300 dilution

Secondary: IRDye800CW Goat Anti-Rabbit IgG at 1/20000 dilution

Predicted band size: 52kD

Observed band size: 52 kD