



Rabbit Anti-ERR-alpha antibody

SL6998R

Product Name:	ERR-alpha
Chinese Name:	雌激素受体相关蛋白 α 抗体
Alias:	Estrogen Related Receptor alpha; ERR- α ; ERR α ; ERR α ; ERR alpha; Err 1; ERR a; ERR alpha; ERR-alpha; Err1; ERR1_HUMAN; ERRa; ERRalpha; ESRL 1; ESRL1; ESRR A; Esrra; Estrogen receptor like 1; Estrogen receptor related 1; Estrogen receptor-like 1; Estrogen related receptor alpha; Estrogen-related receptor alpha; Estrra; Nr3b1; Nuclear receptor subfamily 3 group B member 1; Steroid hormone receptor ERR1.
Organism Species:	Rabbit
Clonality:	Polyclonal
React Species:	Human,Mouse,Rat,Dog,Pig,Cow,Horse,
Applications:	WB=1:500-2000ELISA=1:500-1000IHC-P=1:400-800IHC-F=1:400-800IF=1:50-200 (Paraffin sections need antigen repair) not yet tested in other applications. optimal dilutions/concentrations should be determined by the end user.
Molecular weight:	47kDa
Cellular localization:	The nucleus
Form:	Lyophilized or Liquid
Concentration:	1mg/ml
immunogen:	KLH conjugated synthetic peptide derived from human Estrogen Related Receptor alpha:101-200/423
Lsotype:	IgG
Purification:	affinity purified by Protein A
Storage Buffer:	0.01M TBS(pH7.4) with 1% BSA, 0.03% Proclin300 and 50% Glycerol.
Storage:	Store at -20 °C for one year. Avoid repeated freeze/thaw cycles. The lyophilized antibody is stable at room temperature for at least one month and for greater than a year when kept at -20°C. When reconstituted in sterile pH 7.4 0.01M PBS or diluent of antibody the antibody is stable for at least two weeks at 2-4 °C.
PubMed:	PubMed
Product Detail:	Binds to an ERR-alpha response element (ERRE) containing a single consensus half-site, 5'-TNAAGGTCA-3'. Can bind to the medium-chain acyl coenzyme A

dehydrogenase (MCAD) response element NRRE-1 and may act as an important regulator of MCAD promoter. Binds to the C1 region of the lactoferrin gene promoter. Requires dimerization and the coactivator, PGC-1A, for full activity. The ERRalpha/PGC1alpha complex is a regulator of energy metabolism.

Subunit:

Binds DNA as a monomer or a homodimer. Interacts (via the AF2 domain) with coactivator PPARGC1A (via the L3 motif); the interaction greatly enhances transcriptional activity of genes involved in energy metabolism. Interacts with PIAS4; the interaction enhances sumoylation.

Subcellular Location:

Nucleus.

Similarity:

Belongs to the nuclear hormone receptor family. NR3 subfamily. Contains 1 nuclear receptor DNA-binding domain.

SWISS:

P11474

Gene ID:

2101

Database links:

[Entrez Gene: 2101](#)Human

[Entrez Gene: 26379](#)Mouse

[Entrez Gene: 293701](#)Rat

[Omim: 601998](#)Human

[SwissProt: P11474](#)Human

[SwissProt: O08580](#)Mouse

[SwissProt: Q5QJV7](#)Rat

[Unigene: 110849](#)Human

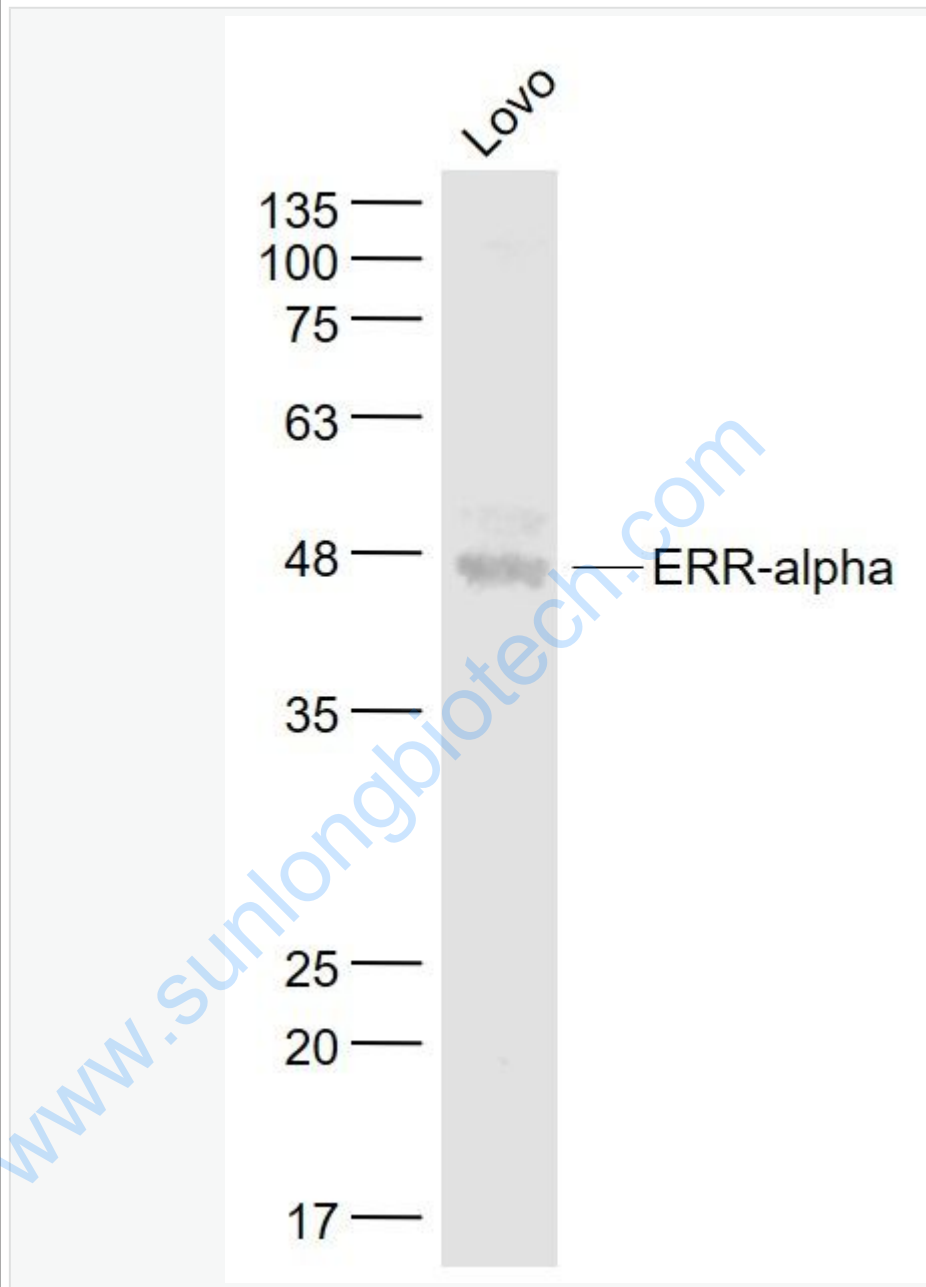
[Unigene: 386776](#)Mouse

[Unigene: 130171](#)Rat

Important Note:

This product as supplied is intended for research use only, not for use in human, therapeutic or diagnostic applications.

Picture:



Sample:

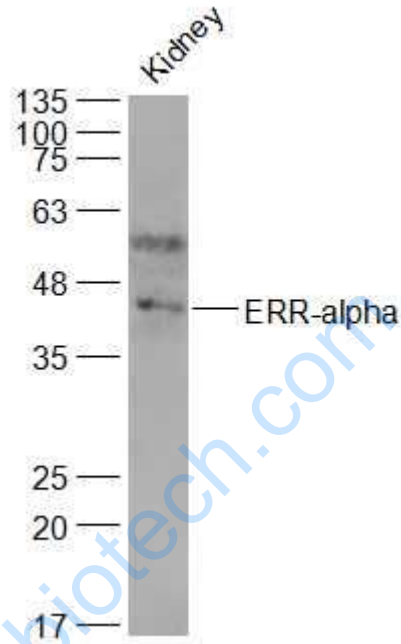
Lovp(Human) Cell Lysate at 30 ug

Primary: Anti- ERR-alpha (SL6998R) at 1/1000 dilution

Secondary: IRDye800CW Goat Anti-Rabbit IgG at 1/20000 dilution

Predicted band size: 47 kD

Observed band size: 47 kD



Sample:

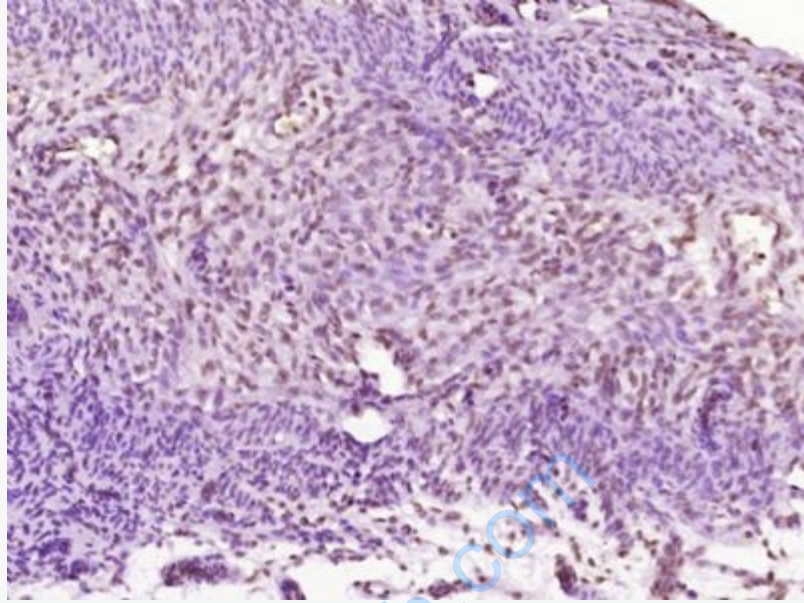
Kidney (Mouse) Lysate at 40 ug

Primary: Anti-ERR-alpha (SL6998R) at 1/1000 dilution

Secondary: IRDye800CW Goat Anti-Rabbit IgG at 1/20000 dilution

Predicted band size: 47 kD

Observed band size: 47 kD



Paraformaldehyde-fixed, paraffin embedded (Mouse uterus); Antigen retrieval by boiling in sodium citrate buffer (pH6.0) for 15min; Block endogenous peroxidase by 3% hydrogen peroxide for 20 minutes; Blocking buffer (normal goat serum) at 37°C for 30min; Antibody incubation with (ERR-alpha) Polyclonal Antibody, Unconjugated (SL6998R) at 1:400 overnight at 4°C, followed by operating according to SP Kit(Rabbit) (sp-0023) instructions and DAB staining.