




Rabbit Anti-Myosin light chain (phospho S20) antibody

SL7052R

Product Name:	Myosin light chain (phospho S20)
Chinese Name:	磷酸化肌球蛋白调节多肽9(平滑肌亚型)抗体
Alias:	MYL9 (phospho S20); p-MLC(Ser20); phospho-MLC(Ser20); p-Myosin light chain(Ser20); MYL9_HUMAN; Myosin regulatory light polypeptide 9; 20 kDa myosin light chain; LC20; MLC-2C; Myosin RLC; Myosin regulatory light chain 2, smooth muscle isoform; Myosin regulatory light chain 9; Myosin regulatory light chain MRLC1; MLC2; MRLC1; MYRL2.
文献引用 	<p>Specific References(3)SL7052R has been referenced in 3 publications.</p> <p>[IF=3.82]Ikemura, S., et al. "Preventive effects of the anti-vasospasm agent via the regulation of the Rho-kinase pathway on the development of steroid-induced osteonecrosis in rabbits." Bone (2013).WB;Rabbit. PubMed:23313282</p> <p>[IF=1.06]Li, Wei, et al. "Tanshinone II a protects against liopolysaccharides-induced endothelial cell injury via Rho/Rho kinase pathway." Chinese Journal of Integrative Medicine 20 (2014): 216-223.WB;Human. PubMed:24615214</p> <p>[IF=3.56]Hoj, Jacob P., et al. "Cellular contractility changes are sufficient to drive epithelial scattering." Experimental Cell Research (2014).WB;Dog. PubMed:24780819</p>
Organism Species:	Rabbit
Clonality:	Polyclonal
React Species:	Human,Mouse,Rat,Dog,Pig,Cow,Rabbit,Sheep,

Applications:	WB=1:500-2000ELISA=1:500-1000IHC-P=1:400-800IHC-F=1:400-800IF=1:100-500 (Paraffin sections need antigen repair) not yet tested in other applications. optimal dilutions/concentrations should be determined by the end user.
Molecular weight:	20kDa
Cellular localization:	cytoplasmic
Form:	Lyophilized or Liquid
Concentration:	1mg/ml
immunogen:	KLH conjugated synthesised phosphopeptide derived from human MYL9 around the phosphorylation site of Ser20:AT(p-S)NV
Lsotype:	IgG
Purification:	affinity purified by Protein A
Storage Buffer:	0.01M TBS(pH7.4) with 1% BSA, 0.03% Proclin300 and 50% Glycerol.
Storage:	Store at -20 °C for one year. Avoid repeated freeze/thaw cycles. The lyophilized antibody is stable at room temperature for at least one month and for greater than a year when kept at -20°C. When reconstituted in sterile pH 7.4 0.01M PBS or diluent of antibody the antibody is stable for at least two weeks at 2-4 °C.
PubMed:	PubMed
Product Detail:	<p>Myosin light chain (MLC) is a subunit of the conventional myosins (e.g. myosin II). In smooth muscle and non-muscle cells conventional myosins mediate a wide variety of contractile events including cytokinesis, cell motility, and smooth muscle contraction. MLC is phosphorylated by multiple serine-threonine kinases such as Rho-kinase and PAK, however myosin light chain kinase (MLCK) acts as the primary kinase. Contractile activity of conventional myosins is regulated by phosphorylation of MLC on several residues.</p> <p>Subunit: Myosin is a hexamer of 2 heavy chains and 4 light chains.</p> <p>Tissue Specificity: Smooth muscle tissues and in some, but not all, nonmuscle cells.</p> <p>Similarity: Contains 3 EF-hand domains.</p> <p>SWISS: P24844</p> <p>Gene ID: 10398</p> <p>Database links: Entrez Gene: 10398Human</p>

[Entrez Gene: 98932](#)Mouse

[Entrez Gene: 296313](#)Rat

[Omid: 609905](#)Human

[SwissProt: P20689](#)Human

[SwissProt: P24844](#)Human

[SwissProt: Q9CQ19](#)Mouse

[SwissProt: Q64122](#)Rat

[Unigene: 504687](#)Human

[Unigene: 271770](#)Mouse

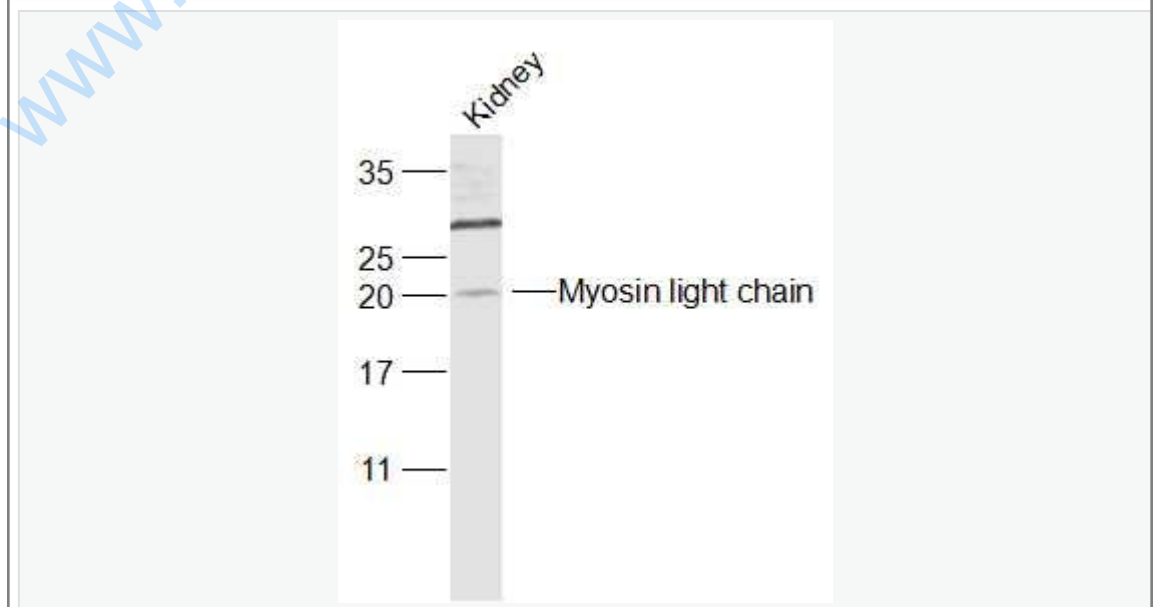
[Unigene: 228729](#)Rat

[Unigene: 6870](#)Rat

Important Note:

This product as supplied is intended for research use only, not for use in human, therapeutic or diagnostic applications.

Picture:



Sample:

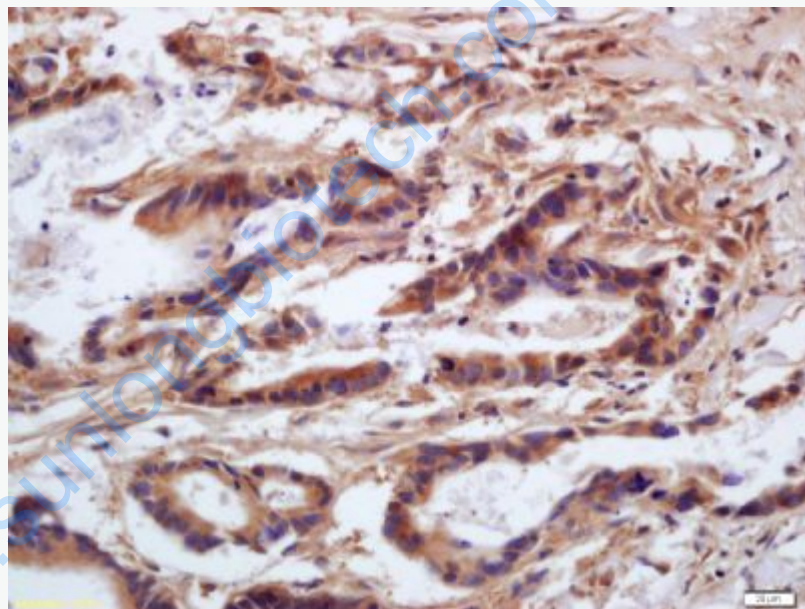
Kidney (Mouse) Lysate at 40 ug

Primary: Anti-Myosin light chain (phospho S20) (SL7052R) at 1/1000 dilution

Secondary: IRDye800CW Goat Anti-Rabbit IgG at 1/20000 dilution

Predicted band size: 20 kD

Observed band size: 20 kD



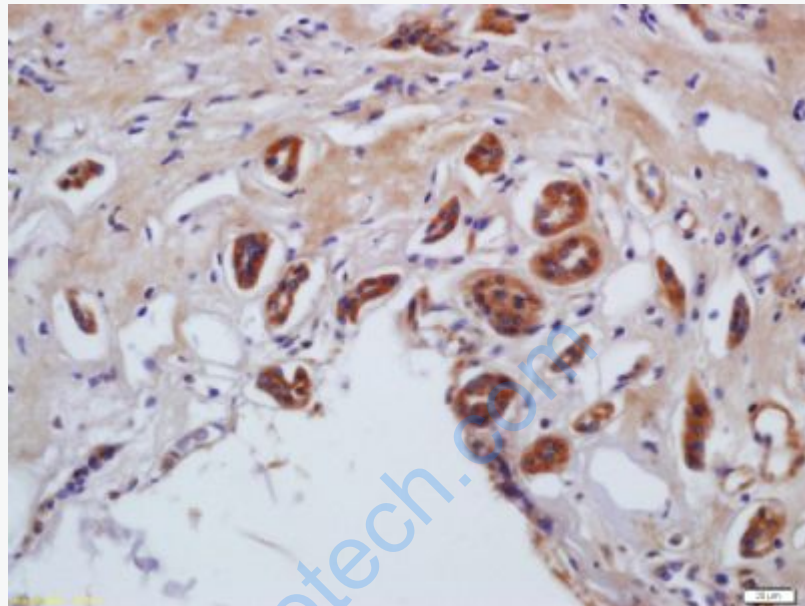
Tissue/cell: human gastric carcinoma; 4% Paraformaldehyde-fixed and paraffin-embedded;

Antigen retrieval: citrate buffer (0.01M, pH 6.0), Boiling bathing for 15min; Block endogenous peroxidase by 3% Hydrogen peroxide for 30min; Blocking buffer (normal goat serum,C-0005) at 37°C for 20 min;

Incubation: Anti-phospho-MLC(Ser20) Polyclonal Antibody,

Unconjugated(SL7052R) 1:200, overnight at 4°C, followed by conjugation to the

secondary antibody(SP-0023) and DAB(C-0010) staining

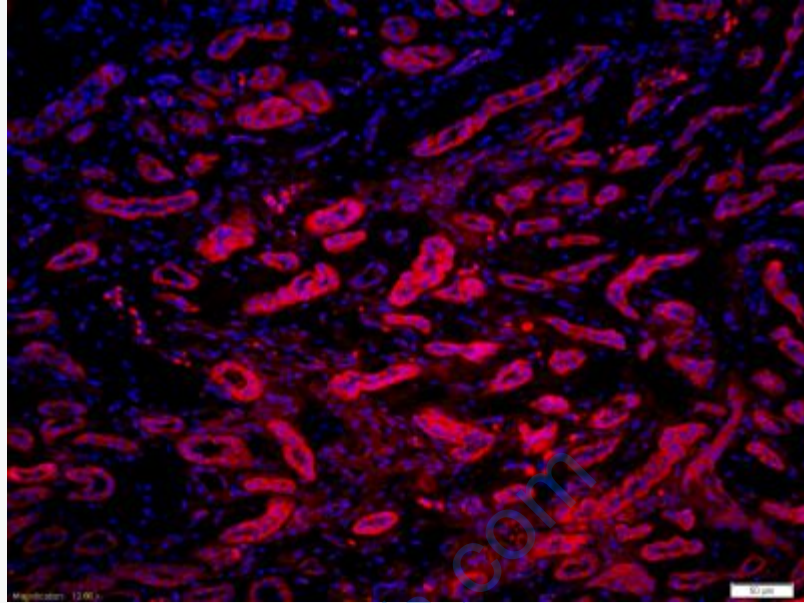


Tissue/cell: human kidney tissue; 4% Paraformaldehyde-fixed and paraffin-embedded;

Antigen retrieval: citrate buffer (0.01M, pH 6.0), Boiling bathing for 15min; Block endogenous peroxidase by 3% Hydrogen peroxide for 30min; Blocking buffer (normal goat serum,C-0005) at 37°C for 20 min;

Incubation: Anti-phospho-MLC(Ser20) Polyclonal Antibody,

Unconjugated(SL7052R) 1:200, overnight at 4°C, followed by conjugation to the secondary antibody(SP-0023) and DAB(C-0010) staining



Tissue/cell: human kidney tissue;4% Paraformaldehyde-fixed and paraffin-embedded;

Antigen retrieval: citrate buffer (0.01M, pH 6.0), Boiling bathing for 15min;

Blocking buffer (normal goat serum,C-0005) at 37°C for 20 min;

Incubation: Anti-phospho-MLC(Ser20) Polyclonal Antibody,

Unconjugated(SL7052R) 1:200, overnight at 4°C; The secondary antibody was Goat Anti-Rabbit IgG, Cy3 conjugated (SL7052R)used at 1:200 dilution for 40 minutes at 37°C. DAPI(5ug/ml,blue,C-0033) was used to stain the cell nuclei