



Rabbit Anti-CDC2L6 antibody

SL7070R

Product Name:	CDC2L6
Chinese Name:	细胞分裂周期2样蛋白激酶6抗体
Alias:	CDC2 related protein kinase 6; CDC2-related protein kinase 6; CDK11; Cdk19; CDK19_HUMAN; CDK8 like cyclin dependent kinase; Cell division cycle 2 like 6 (CDK8 like); Cell division cycle 2 like protein kinase 6; Cell division cycle 2-like protein kinase 6; Cell division protein kinase 19; Cyclin dependent kinase (CDC2 like) 11; Cyclin dependent kinase 11; Cyclin-dependent kinase 11; Cyclin-dependent kinase 19; Death preventing kinase; Death-preventing kinase.
Organism Species:	Rabbit
Clonality:	Polyclonal
React Species:	Human,Mouse,Rat,Cow,Horse,Rabbit,Monkey,Chimpanzee,
Applications:	ELISA=1:500-1000IHC-P=1:400-800IHC-F=1:400-800IF=1:100-500 (Paraffin sections need antigen repair) not yet tested in other applications. optimal dilutions/concentrations should be determined by the end user.
Molecular weight:	57kDa
Cellular localization:	The nucleuscytoplasmic
Form:	Lyophilized or Liquid
Concentration:	1mg/ml
immunogen:	KLH conjugated synthetic peptide derived from human CDC2L6:21-120/502
Lsotype:	IgG
Purification:	affinity purified by Protein A
Storage Buffer:	0.01M TBS(pH7.4) with 1% BSA, 0.03% Proclin300 and 50% Glycerol.
Storage:	Store at -20 °C for one year. Avoid repeated freeze/thaw cycles. The lyophilized antibody is stable at room temperature for at least one month and for greater than a year when kept at -20°C. When reconstituted in sterile pH 7.4 0.01M PBS or diluent of antibody the antibody is stable for at least two weeks at 2-4 °C.
PubMed:	PubMed
Product Detail:	This gene encodes a protein that is one of the components of the Mediator coactivator complex. The Mediator complex is a multiprotein complex required for transcriptional

activation by DNA binding transcription factors of genes transcribed by RNA polymerase II. The protein encoded by this gene is similar to cyclin-dependent kinase 8 which can also be a component of the Mediator complex.

Similarity:

Belongs to the protein kinase superfamily. CMGC Ser/Thr protein kinase family. CDC2/CDKX subfamily.
Contains 1 protein kinase domain.

SWISS:

Q9BWU1

Gene ID:

23097

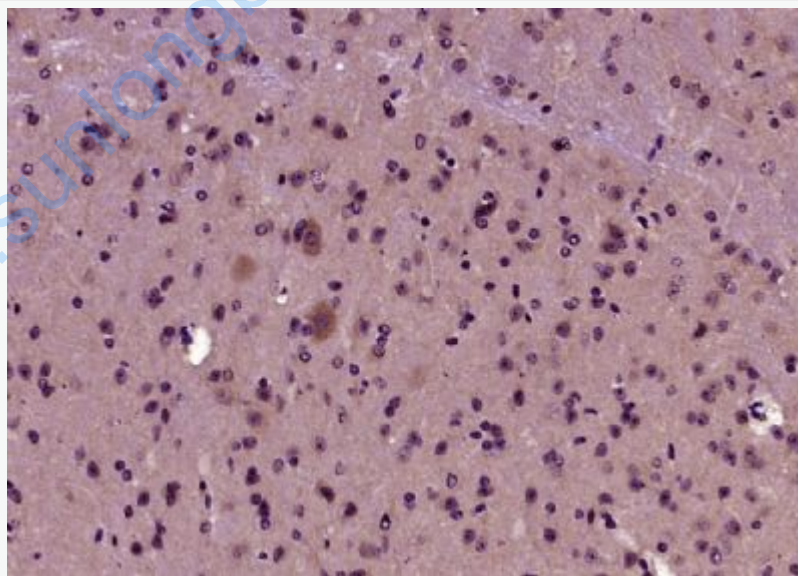
Database links:

UniProtKB/Swiss-Prot: Q9BWU1.1

Important Note:

This product as supplied is intended for research use only, not for use in human, therapeutic or diagnostic applications.

Picture:



Paraformaldehyde-fixed, paraffin embedded (Mouse brain); Antigen retrieval by boiling in sodium citrate buffer (pH6.0) for 15min; Block endogenous peroxidase by 3% hydrogen peroxide for 20 minutes; Blocking buffer (normal goat serum) at 37°C for 30min; Antibody incubation with (CDC2L6) Polyclonal Antibody, Unconjugated

	<p>(SL7070R) at 1:400 overnight at 4°C, followed by operating according to SP Kit(Rabbit) (sp-0023) instructions and DAB staining.</p>
--	--

www.sunlongbiotech.com