



Rabbit Anti-BMP11 antibody

SL7076R

Product Name:	BMP11
Chinese Name:	骨形态发生蛋白11抗体
Alias:	BMP 11 BMP11; Bone morphogenetic protein 11; GDF 11; Growth differentiation factor 11; GDF11_HUMAN.
Organism Species:	Rabbit
Clonality:	Polyclonal
React Species:	Human,Mouse,Chicken,Pig,Cow,Rabbit,Sheep,
Applications:	WB=1:500-2000ELISA=1:500-1000 not yet tested in other applications. optimal dilutions/concentrations should be determined by the end user.
Molecular weight:	12/43kDa
Cellular localization:	Secretory protein
Form:	Lyophilized or Liquid
Concentration:	1mg/ml
immunogen:	KLH conjugated synthetic peptide derived from human BMP11:301-407/407
Lsotype:	IgG
Purification:	affinity purified by Protein A
Storage Buffer:	0.01M TBS(pH7.4) with 1% BSA, 0.03% Proclin300 and 50% Glycerol.
Storage:	Store at -20 °C for one year. Avoid repeated freeze/thaw cycles. The lyophilized antibody is stable at room temperature for at least one month and for greater than a year when kept at -20°C. When reconstituted in sterile pH 7.4 0.01M PBS or diluent of antibody the antibody is stable for at least two weeks at 2-4 °C.
PubMed:	PubMed
Product Detail:	The protein encoded by this gene is a member of the bone morphogenetic protein (BMP) family and the TGF-beta superfamily. This group of proteins is characterized by a polybasic proteolytic processing site which is cleaved to produce a mature protein containing seven conserved cysteine residues. The members of this family are regulators of cell growth and differentiation in both embryonic and adult tissues. Studies in mice and Xenopus suggest that this protein is involved in mesodermal formation and neurogenesis during embryonic development. [provided by RefSeq, Jul 2008].

Function:

Secreted signal that acts globally to specify positional identity along the anterior/posterior axis during development. Play critical roles in patterning both mesodermal and neural tissues and in establishing the skeletal pattern.

Subunit:

Homodimer; disulfide-linked.

Subcellular Location:

Secreted (Probable).

Similarity:

Belongs to the TGF-beta family.

SWISS:

O95390

Gene ID:

10220

Database links:

[Entrez Gene: 10220](#)Human

[Entrez Gene: 14561](#)Mouse

[Entrez Gene: 29454](#)Rat

[Omim: 603936](#)Human

[SwissProt: O95390](#)Human

[SwissProt: Q9Z1W4](#)Mouse

[SwissProt: Q9Z217](#)Rat

[Unigene: 600883](#)Human

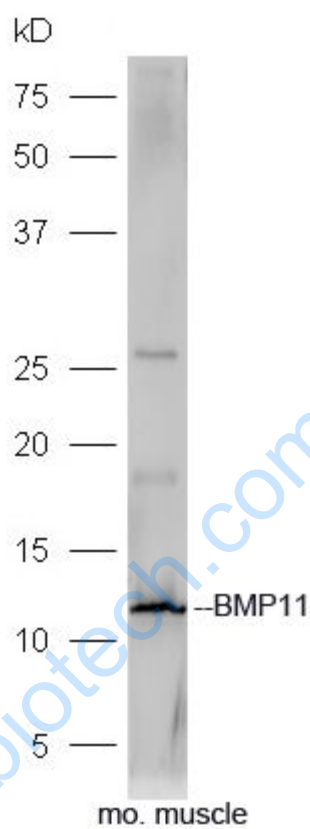
[Unigene: 299218](#)Mouse

[Unigene: 51292](#)Rat

Important Note:

This product as supplied is intended for research use only, not for use in human, therapeutic or diagnostic applications.

Picture:



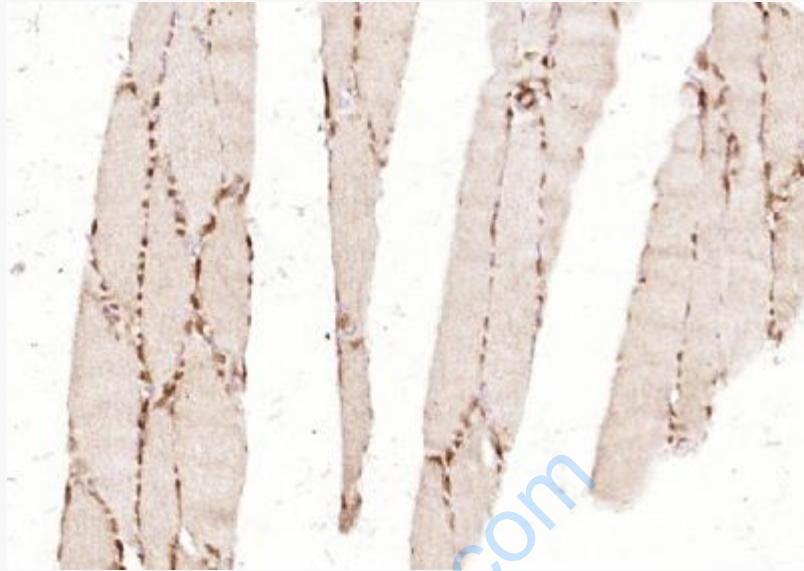
Sample: Muscle (Mouse) Lysate at 40 ug

Primary: Anti-BMP11 (SL7076R) at 1/300 dilution

Secondary: HRP conjugated Goat-Anti-rabbit IgG (SL7076R) at 1/5000 dilution

Predicted band size: 12 kD

Observed band size: 12 kD



Paraformaldehyde-fixed, paraffin embedded (mouse skeletal muscle tissue); Antigen retrieval by boiling in sodium citrate buffer (pH6.0) for 15min; Block endogenous peroxidase by 3% hydrogen peroxide for 20 minutes; Blocking buffer (normal goat serum) at 37°C for 30min; Antibody incubation with (BMP11) Polyclonal Antibody, Unconjugated (SL7076R) at 1:400 overnight at 4°C, followed by operating according to SP Kit(Rabbit) (sp-0023) instructions and DAB staining.