



Rabbit Anti-CARD15/NOD2 antibody

SL7084R

Product Name:	CARD15/NOD2
Chinese Name:	凋亡加强结构域蛋白15抗体
Alias:	ACUG; Arthrocutaneouveal granulomatosis; BLAU; CARD15; Caspase recruitment domain protein 15; Caspase recruitment domain-containing protein 15; CD; IBD1; Inflammatory bowel disease protein 1; LRR containing protein; LRR-containing protein; Nod2; NOD2 protein; NOD2_HUMAN; NOD2B; nucleotide binding oligomerization domain 2; nucleotide-binding oligomerization domain 2; Nucleotide-binding oligomerization domain-containing protein 2; PSORAS1.
Organism Species:	Rabbit
Clonality:	Polyclonal
React Species:	Human,Mouse,Rat,Dog,Pig,Cow,Horse,Rabbit,
Applications:	WB=1:500-2000ELISA=1:500-1000Flow-Cyt=1ug/Test not yet tested in other applications. optimal dilutions/concentrations should be determined by the end user.
Molecular weight:	114kDa
Cellular localization:	cytoplasmic
Form:	Lyophilized or Liquid
Concentration:	1mg/ml
immunogen:	KLH conjugated synthetic peptide derived from human CARD15:251-350/1040
Lsotype:	IgG
Purification:	affinity purified by Protein A
Storage Buffer:	0.01M TBS(pH7.4) with 1% BSA, 0.03% Proclin300 and 50% Glycerol.
Storage:	Store at -20 °C for one year. Avoid repeated freeze/thaw cycles. The lyophilized antibody is stable at room temperature for at least one month and for greater than a year when kept at -20°C. When reconstituted in sterile pH 7.4 0.01M PBS or diluent of antibody the antibody is stable for at least two weeks at 2-4 °C.
PubMed:	PubMed
Product Detail:	Defects in NOD2 are the cause of sarcoidosis early-onset (EOS) . EOS is a form of sarcoidosis manifesting in children younger than 4 years of age. Sarcoidosis is an idiopathic, systemic, inflammatory disease characterized by the formation of immune

granulomas in involved organs. Granulomas predominantly invade the lungs and the lymphatic system, but also skin, liver, spleen, eyes and other organs may be involved. Early-onset sarcoidosis is quite rare and has a distinct triad of skin, joint and eye disorders, without apparent pulmonary involvement. Compared with an asymptomatic and sometimes naturally disappearing course of the disease in older children, early-onset sarcoidosis is progressive and in many cases causes severe complications, such as blindness, joint destruction and visceral involvement.

Subunit:

Binds to RIPK2/RICK by CARD-CARD interaction.

Subcellular Location:

Cytoplasm.

Tissue Specificity:

Monocytes-specific.

Similarity:

Contains 2 CARD domains.

Contains 9 LRR (leucine-rich) repeats.

Contains 1 NACHT domain.

SWISS:

Q9HC29

Gene ID:

64127

Database links:

[Entrez Gene: 64127](#)Human

[Entrez Gene: 257632](#)Mouse

[Entrez Gene: 291912](#)Rat

[Omim: 605956](#)Human

[SwissProt: Q9HC29](#)Human

[SwissProt: Q8K3Z0](#)Mouse

[Unigene: 592072](#)Human

[Unigene: 222633](#)Mouse

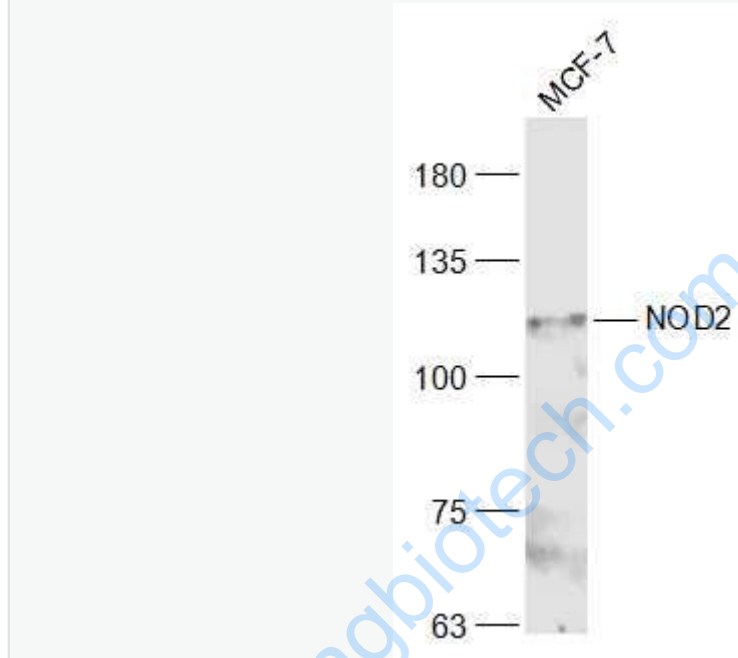
[Unigene: 218600](#)Rat

Important Note:

This product as supplied is intended for research use only, not for use in human, therapeutic or diagnostic applications.

CARD15与家族性肠黏膜克罗恩病有关。

Picture:



Sample:

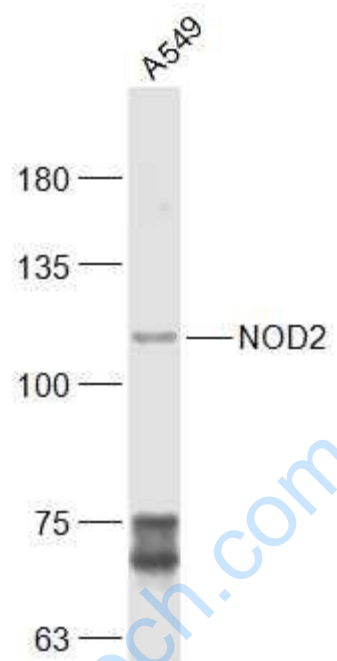
MCF-7(Human) Cell Lysate at 30 ug

Primary: Anti-NOD2 (SL7084R) at 1/300 dilution

Secondary: IRDye800CW Goat Anti-Rabbit IgG at 1/20000 dilution

Predicted band size: 114 kD

Observed band size: 114 kD



Sample:

A549(Human) Cell Lysate at 30 ug

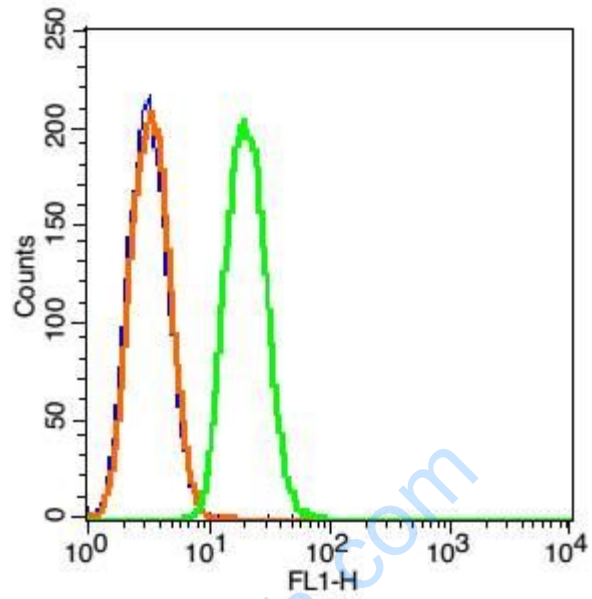
MCF-7(Human) Cell Lysate at 30 ug

Primary: Anti-NOD2 (SL7084R) at 1/300 dilution

Secondary: IRDye800CW Goat Anti-Rabbit IgG at 1/20000 dilution

Predicted band size: 114 kD

Observed band size: 114 kD



Blank control(blue): Raji(fixed with 2% paraformaldehyde (10 min)).

Primary Antibody:Rabbit Anti-CARD15/AF488 Conjugated antibody(SL7084R),

Dilution: 1 μ g in 100 μ L 1X PBS containing 0.5% BSA;

Isotype Control Antibody: Rabbit IgG/AF488(orange) ,used under the same conditions);