



## Rabbit Anti-APOL6 antibody

SL7095R

|                               |   |
|-------------------------------|---|
| <b>Product Name:</b>          | APOL6   |
| <b>Chinese Name:</b>          | 载Lipoprotein样蛋白6抗体  |
| <b>Alias:</b>                 | APOLVI; DKFZp667M075; FLJ38562; FLJ90164; MGC57495; 2310076O14Rik; APOL VI; Apolipoprotein L VI; Apolipoprotein L, 6; Apolipoprotein L6; APOL6 HUMAN.   |
| <b>Organism Species:</b>      | Rabbit  |
| <b>Clonality:</b>             | Polyclonal  |
| <b>React Species:</b>         | Human,  |
| <b>Applications:</b>          | WB=1:500-2000ELISA=1:500-1000IHC-P=1:400-800IHC-F=1:400-800IF=1:100-500 (Paraffin sections need antigen repair)<br>not yet tested in other applications.<br>optimal dilutions/concentrations should be determined by the end user.  |
| <b>Molecular weight:</b>      | 38kDa   |
| <b>Cellular localization:</b> | cytoplasmic   |
| <b>Form:</b>                  | Lyophilized or Liquid   |
| <b>Concentration:</b>         | 1mg/ml  |
| <b>immunogen:</b>             | KLH conjugated synthetic peptide derived from human APOL6:241-343/343   |
| <b>Lsotype:</b>               | IgG   |
| <b>Purification:</b>          | affinity purified by Protein A  |
| <b>Storage Buffer:</b>        | 0.01M TBS(pH7.4) with 1% BSA, 0.03% Proclin300 and 50% Glycerol.  |
| <b>Storage:</b>               | Store at -20 °C for one year. Avoid repeated freeze/thaw cycles. The lyophilized antibody is stable at room temperature for at least one month and for greater than a year when kept at -20°C. When reconstituted in sterile pH 7.4 0.01M PBS or diluent of antibody the antibody is stable for at least two weeks at 2-4 °C. |
| <b>PubMed:</b>                | <a href="#">PubMed</a>  |
| <b>Product Detail:</b>        | APOL6 is a member of the apolipoprotein L gene family. It is found in the cytoplasm, where it may affect the movement of lipids or allow the binding of lipids to organelles.<br><b>Function:</b><br>May affect the movement of lipids in the cytoplasm or allow the binding of lipids to                                     |

organelles.

**Subcellular Location:**

Cytoplasm (Probable).

**Tissue Specificity:**

Widely expressed; highly expressed in the uterus, fetal brain and spinal cord, also detected in heart, liver, lung, colon, spleen, thymus, prostate, placenta, adrenal gland, salivary and mammary gland.

**Similarity:**

Belongs to the apolipoprotein L family.

**SWISS:**

Q9BWW8

**Gene ID:**

80830

**Database links:**

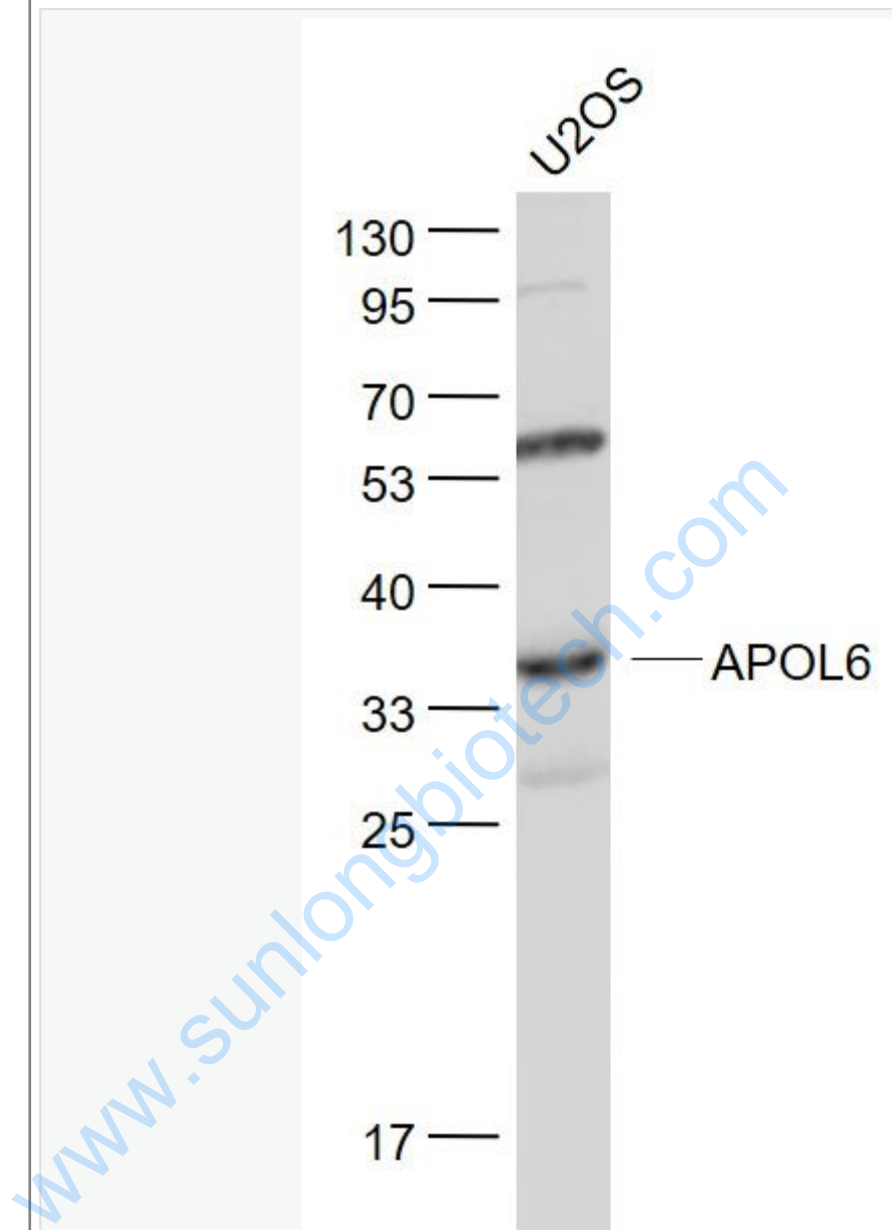
UniProtKB/Swiss-Prot: Q9BWW8.1

**Important Note:**

This product as supplied is intended for research use only, not for use in human, therapeutic or diagnostic applications.

www.sunbio.com

Picture:



Sample:

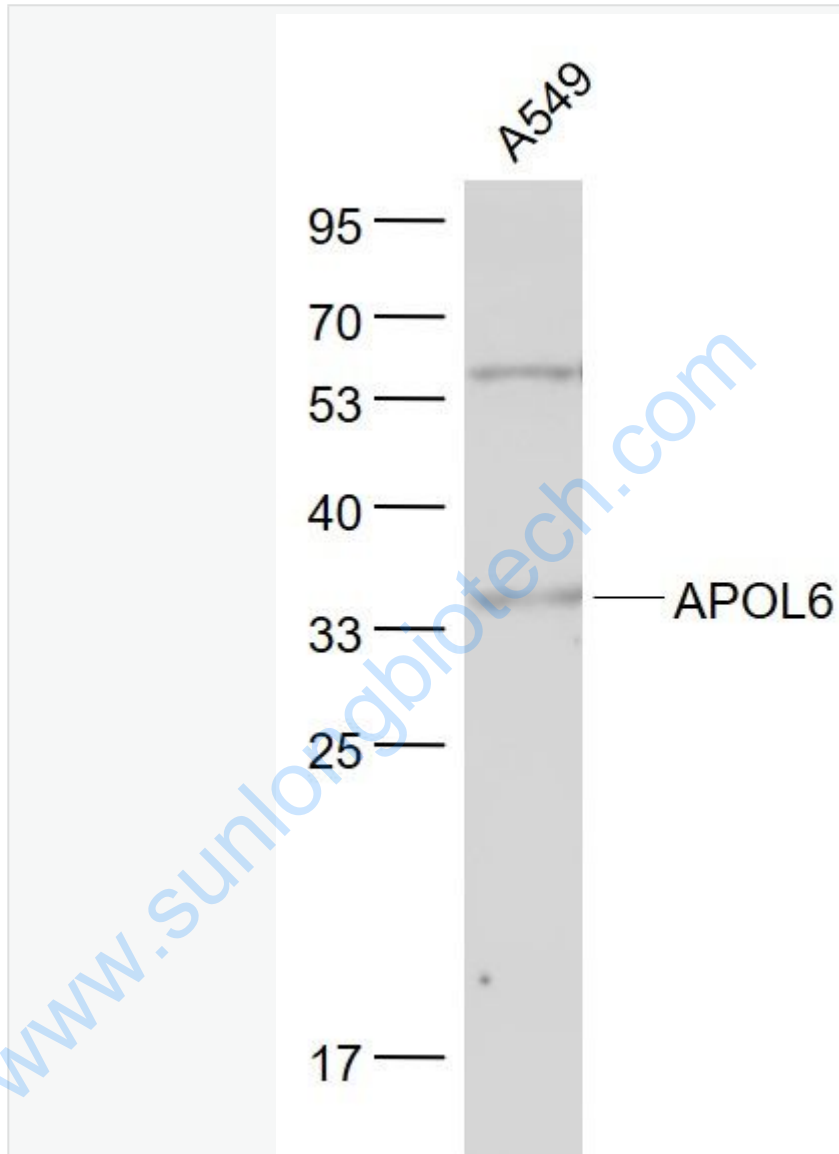
U2OS(Human) Cell Lysate at 30 ug

Primary: Anti- APOL6 (SL7095R) at 1/1000 dilution

Secondary: IRDye800CW Goat Anti-Rabbit IgG at 1/20000 dilution

Predicted band size: 38 kD

Observed band size: 35 kD



Sample:

A549(Human) Cell Lysate at 30 ug

Primary: Anti- APOL6 (SL7095R) at 1/1000 dilution

Secondary: IRDye800CW Goat Anti-Rabbit IgG at 1/20000 dilution

Predicted band size: 38 kD

|  |                           |
|--|---------------------------|
|  | Observed band size: 35 kD |
|--|---------------------------|

[www.sunlongbiotech.com](http://www.sunlongbiotech.com)