



Rabbit Anti-ZNF112 antibody

SL7171R

Product Name:	ZNF112
Chinese Name:	Zinc finger protein112抗体
Alias:	ZF112_HUMAN; Zfp 112; Zfp-112; ZFP112; Zinc finger protein 112 homolog (mouse); Zinc finger protein 112 homolog; Zinc finger protein 228; ZNF228.
Organism Species:	Rabbit
Clonality:	Polyclonal
React Species:	Human,
Applications:	WB=1:500-2000ELISA=1:500-1000IHC-P=1:400-800IHC-F=1:400-800ICC=1:100-500IF=1:100-500 (Paraffin sections need antigen repair) not yet tested in other applications. optimal dilutions/concentrations should be determined by the end user.
Molecular weight:	106kDa
Cellular localization:	The nucleus
Form:	Lyophilized or Liquid
Concentration:	1mg/ml
immunogen:	KLH conjugated synthetic peptide derived from human ZNF112:131-230/913
Lsotype:	IgG
Purification:	affinity purified by Protein A
Storage Buffer:	0.01M TBS(pH7.4) with 1% BSA, 0.03% Proclin300 and 50% Glycerol.
Storage:	Store at -20 °C for one year. Avoid repeated freeze/thaw cycles. The lyophilized antibody is stable at room temperature for at least one month and for greater than a year when kept at -20°C. When reconstituted in sterile pH 7.4 0.01M PBS or diluent of antibody the antibody is stable for at least two weeks at 2-4 °C.
PubMed:	PubMed
Product Detail:	ZNF112 (Zinc Finger Protein 112) is a Protein Coding gene. Among its related pathways are Gene Expression. GO annotations related to this gene include nucleic acid binding. An important paralog of this gene is ZNF227. Function: May be involved in transcriptional regulation.

Subcellular Location:

Nucleus.

Similarity:

Belongs to the krueppel C2H2-type zinc-finger protein family.

Contains 17 C2H2-type zinc fingers.

Contains 1 KRAB domain.

SWISS:

Q9UJU3

Gene ID:

7771

Database links:

[Entrez Gene: 7771](#) Human

[Entrez Gene: 57745](#) Mouse

[Entrez Gene: 308420](#) Rat

[SwissProt: Q9UJU3](#) Human

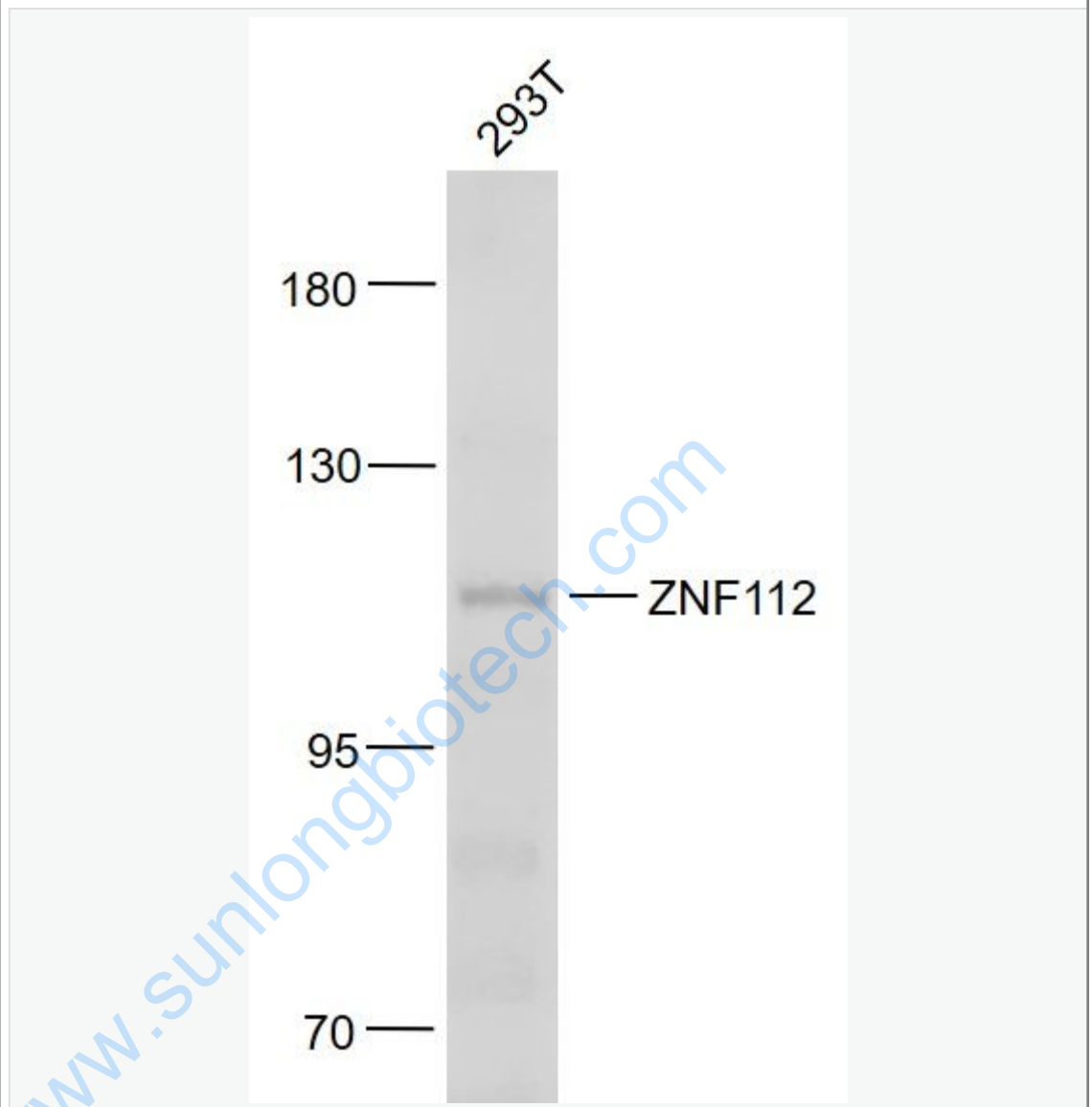
[SwissProt: Q0VAW7](#) Mouse

[Unigene: 48589](#) Human

Important Note:

This product as supplied is intended for research use only, not for use in human, therapeutic or diagnostic applications.

Picture:



Sample:

293T(Human) Cell Lysate at 30 ug

Primary: Anti-ZNF112 (SL7171R) at 1/1000 dilution

Secondary: IRDye800CW Goat Anti-Rabbit IgG at 1/20000 dilution

Predicted band size: 106 kD

Observed band size: 106 kD