



Rabbit Anti-ZNF336/GZF1 antibody

SL7230R

Product Name:	ZNF336/GZF1
Chinese Name:	Zinc finger protein336抗体
Alias:	GDNF inducible zinc finger gene 1; GDNF inducible zinc finger protein 1; GDNF-inducible zinc finger protein 1; GZF 1; GZF1_HUMAN; HGNC:15808; ZBTB 23; ZBTB23; Zinc finger and BTB domain containing protein 23; Zinc finger and BTB domain-containing protein 23; Zinc finger protein 336; ZNF 336.
Organism Species:	Rabbit
Clonality:	Polyclonal
React Species:	Human,Mouse,Rat,Chicken,Dog,Horse,Rabbit,
Applications:	WB=1:500-2000ELISA=1:500-1000IHC-P=1:400-800IHC-F=1:400-800ICC=1:100-500IF=1:100-500 (Paraffin sections need antigen repair) not yet tested in other applications. optimal dilutions/concentrations should be determined by the end user.
Molecular weight:	80kDa
Cellular localization:	The nucleus
Form:	Lyophilized or Liquid
Concentration:	1mg/ml
immunogen:	KLH conjugated synthetic peptide derived from human ZNF336:541-640/711
Lsotype:	IgG
Purification:	affinity purified by Protein A
Storage Buffer:	Preservative: 15mM Sodium Azide, Constituents: 1% BSA, 0.01M PBS, pH 7.4
Storage:	Store at -20 °C for one year. Avoid repeated freeze/thaw cycles. The lyophilized antibody is stable at room temperature for at least one month and for greater than a year when kept at -20°C. When reconstituted in sterile pH 7.4 0.01M PBS or diluent of antibody the antibody is stable for at least two weeks at 2-4 °C.
PubMed:	PubMed
Product Detail:	GZF1 (GDNF Inducible Zinc Finger Protein 1) is a Protein Coding gene. GO annotations related to this gene include sequence-specific DNA binding and transcriptional repressor activity, RNA polymerase II core promoter proximal region sequence-specific binding.

Function:

Transcriptional repressor. Binds the GZF1 responsive element (GRE) (consensus: 5'-TGCGCN[TG][CA]TATA-3'). May be regulating VSX2/HOX10 expression.

Subcellular Location:

Nucleus.

Tissue Specificity:

Expressed in adult brain, heart, skeletal muscle, kidney and liver. Also detected in fetal brain and kidney, and at lower levels in fetal lung and liver.

Similarity:

Belongs to the krueppel C2H2-type zinc-finger protein family.
Contains 1 BTB (POZ) domain.
Contains 10 C2H2-type zinc fingers.

SWISS:

Q9H116

Gene ID:

64412

Database links:

[Entrez Gene: 64412](#) Human

[Entrez Gene: 74533](#) Mouse

[Entrez Gene: 311508](#) Rat

[SwissProt: Q9H116](#) Human

[SwissProt: Q4VBD9](#) Mouse

[SwissProt: D3ZUU2](#) Rat

[Unigene: 28921](#) Human

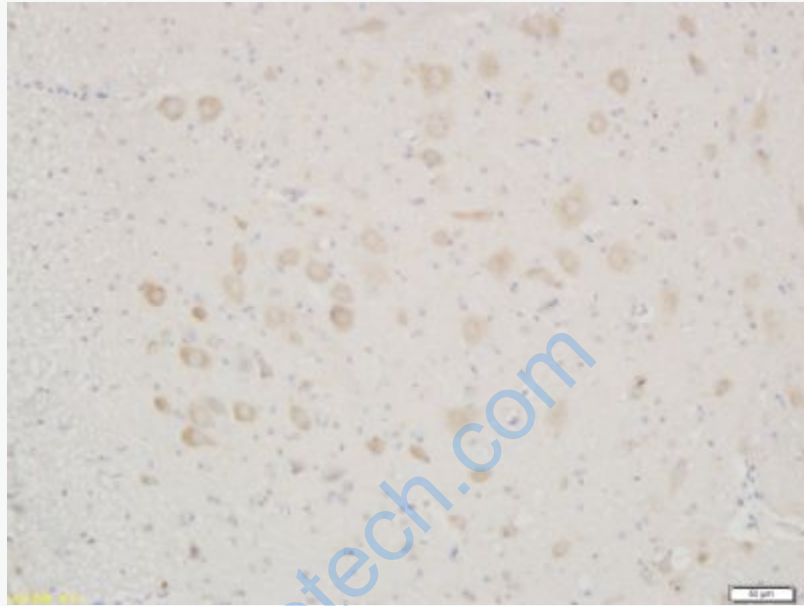
[Unigene: 709462](#) Human

[Unigene: 136913](#) Mouse

[Unigene: 40179](#) Rat

Important Note:

This product as supplied is intended for research use only, not for use in human, therapeutic or diagnostic applications.



Picture:

Paraformaldehyde-fixed, paraffin embedded (rat cerebellum); Antigen retrieval by boiling in sodium citrate buffer (pH6.0) for 15min; Block endogenous peroxidase by 3% hydrogen peroxide for 20 minutes; Blocking buffer (normal goat serum) at 37°C for 30min; Antibody incubation with (ZNF336 GZF1) Polyclonal Antibody, Unconjugated (SL7230R) at 1:200 overnight at 4°C, followed by operating according to SP Kit(Rabbit) (sp-0023) instructions and DAB staining.