

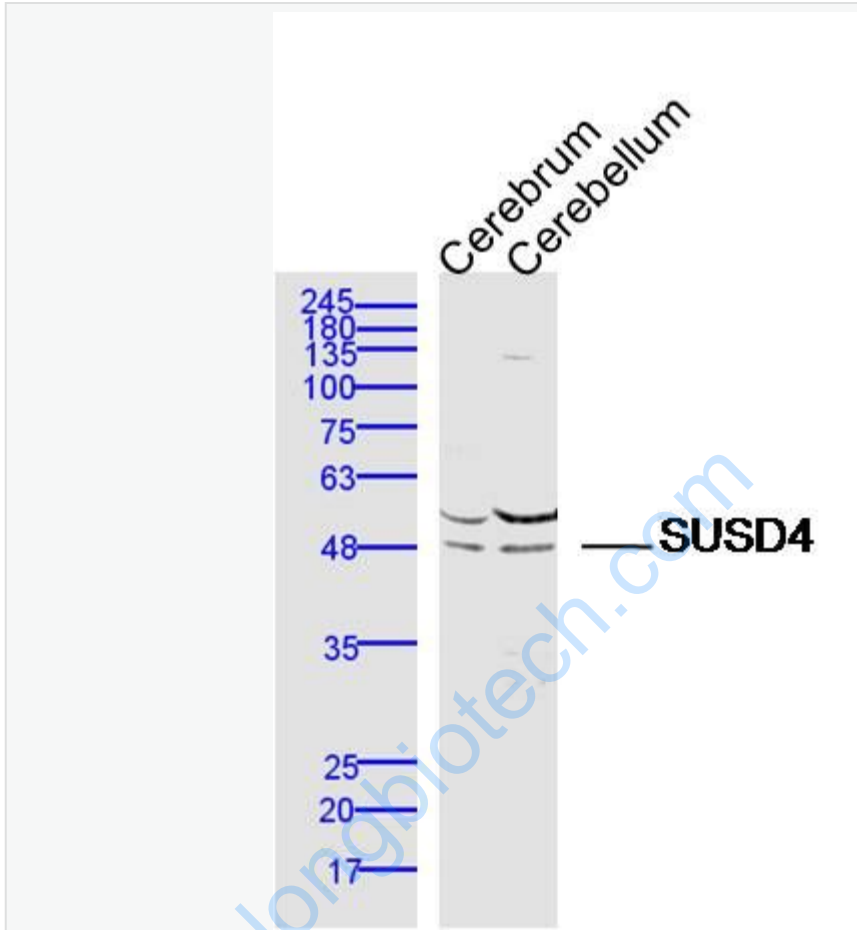


Rabbit Anti-SUSD4 antibody

SL7330R

Product Name:	SUSD4
Chinese Name:	SUSD4蛋白抗体
Alias:	FLJ10052; OTTHUMP00000036037; OTTHUMP00000036038; PRO222; RP11 239E10.4; SUSD 4; SUSD4; SUSD4_HUMAN; Sushi domain containing 4; Sushi domain containing protein 4; Sushi domain-containing protein 4; YHGM196.
Organism Species:	Rabbit
Clonality:	Polyclonal
React Species:	Human,Mouse,Rat,Cow,
Applications:	WB=1:500-2000ELISA=1:500-1000IHC-P=1:400-800IHC-F=1:400-800ICC=1:100-500IF=1:100-500 (Paraffin sections need antigen repair) not yet tested in other applications. optimal dilutions/concentrations should be determined by the end user.
Molecular weight:	49kDa
Cellular localization:	The cell membrane
Form:	Lyophilized or Liquid
Concentration:	1mg/ml
immunogen:	KLH conjugated synthetic peptide derived from human SUSD4:251-350/490<Extracellular>
Lsotype:	IgG
Purification:	affinity purified by Protein A
Storage Buffer:	Preservative: 15mM Sodium Azide, Constituents: 1% BSA, 0.01M PBS, pH 7.4
Storage:	Store at -20 °C for one year. Avoid repeated freeze/thaw cycles. The lyophilized antibody is stable at room temperature for at least one month and for greater than a year when kept at -20°C. When reconstituted in sterile pH 7.4 0.01M PBS or diluent of antibody the antibody is stable for at least two weeks at 2-4 °C.
PubMed:	PubMed
Product Detail:	

Picture:



Sample:

Cerebrum (Mouse) Lysate at 40 ug

Cerebellum (Mouse) Lysate at 40 ug

Primary: Anti- SUSD4 (SL7330R) at 1/300 dilution

Secondary: IRDye800CW Goat Anti-Rabbit IgG at 1/20000 dilution

Predicted band size: 49 kD

Observed band size: 49 kD