



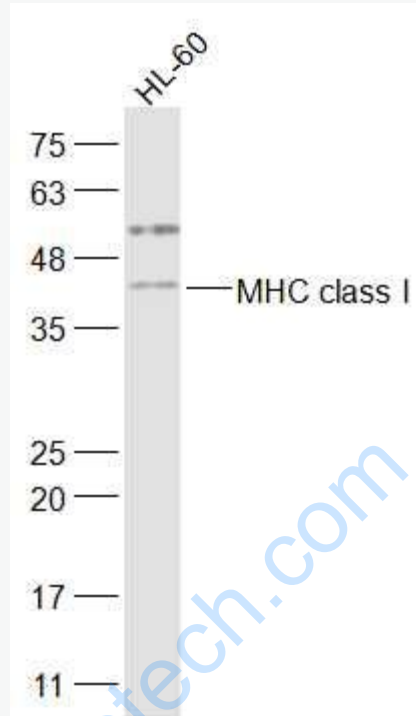
Rabbit Anti-MHC class I antibody

SL7335R

Product Name:	MHC class I
Chinese Name:	组织相容性复合体蛋白1抗体
Alias:	MHC-1; MHC1; MHC 1; A 28; A 9; Aw 24; Aw 68; CLASS I HISTOCOMPATIBILITY ANTIGEN; H2 K1; H2K; HLA A; HLAA; HLA-A; HLA class I histocompatibility antigen A 1 alpha chain; HLA class I histocompatibility antigen A 11 alpha chain; HLA class I histocompatibility antigen A 2 alpha chain; HLA class I histocompatibility antigen A 24 alpha chain; HLA class I histocompatibility antigen A 3 alpha chain; HLA class I histocompatibility antigen A 30 alpha chain; HLA class I histocompatibility antigen A 32 alpha chain; HLA class I histocompatibility antigen A 68 alpha chain; Major histocompatibility complex class I A; MHC class I heavy chain H2 K; 1A24 HUMAN.
Organism Species:	Rabbit
Clonality:	Polyclonal
React Species:	Human,
Applications:	WB=1:500-2000ELISA=1:500-1000IHC-P=1:400-800Flow-Cyt=3ug/Test (Paraffin sections need antigen repair) not yet tested in other applications. optimal dilutions/concentrations should be determined by the end user.
Molecular weight:	40kDa
Cellular localization:	The cell membrane
Form:	Lyophilized or Liquid
Concentration:	1mg/ml
immunogen:	KLH conjugated synthetic peptide derived from human HLA-A:51-150/365<Extracellular>
Lsotype:	IgG
Purification:	affinity purified by Protein A
Storage Buffer:	0.01M TBS(pH7.4) with 1% BSA, 0.03% Proclin300 and 50% Glycerol.
Storage:	Store at -20 °C for one year. Avoid repeated freeze/thaw cycles. The lyophilized antibody is stable at room temperature for at least one month and for greater than a year when kept at -20°C. When reconstituted in sterile pH 7.4 0.01M PBS or diluent of

	antibody the antibody is stable for at least two weeks at 2-4 °C.
PubMed:	PubMed
Product Detail:	<p>MHC Class I molecules play a central role in the immune system by presenting peptides derived from the endoplasmic reticulum lumen. MHC class I antigens are heterodimers consisting of one alpha chain (44kDa) with beta 2 microglobulin (11.5 kDa). The antigen is expressed by all somatic cells at varying levels. MHC Class I molecules are expressed on most nucleated cells where they present endogenously synthesized antigenic peptides to CD8+ T lymphocytes, which are usually cytotoxic T cells. Fibroblasts or neurons however only show a low level of antigen.</p> <p>Function: Involved in the presentation of foreign antigens to the immune system.</p> <p>Subunit: Heterodimer of an alpha chain and a beta chain (beta-2-microglobulin). Interacts with human herpesvirus 8 MIR1 protein (By similarity).</p> <p>Subcellular Location: Cell Membrane; Type I membrane protein.</p> <p>Post-translational modifications: Polyubiquitinated in a post ER compartment by interaction with human herpesvirus 8 MIR1 protein. This targets the protein for rapid degradation via the ubiquitin system (By similarity).</p> <p>Similarity: Belongs to the MHC class I family. Contains 1 Ig-like C1-type (immunoglobulin-like) domain.</p> <p>SWISS: P05534</p> <p>Gene ID: 3105</p> <p>Database links:</p> <p>Important Note: This product as supplied is intended for research use only, not for use in human, therapeutic or diagnostic applications.</p>

Picture:



Sample:

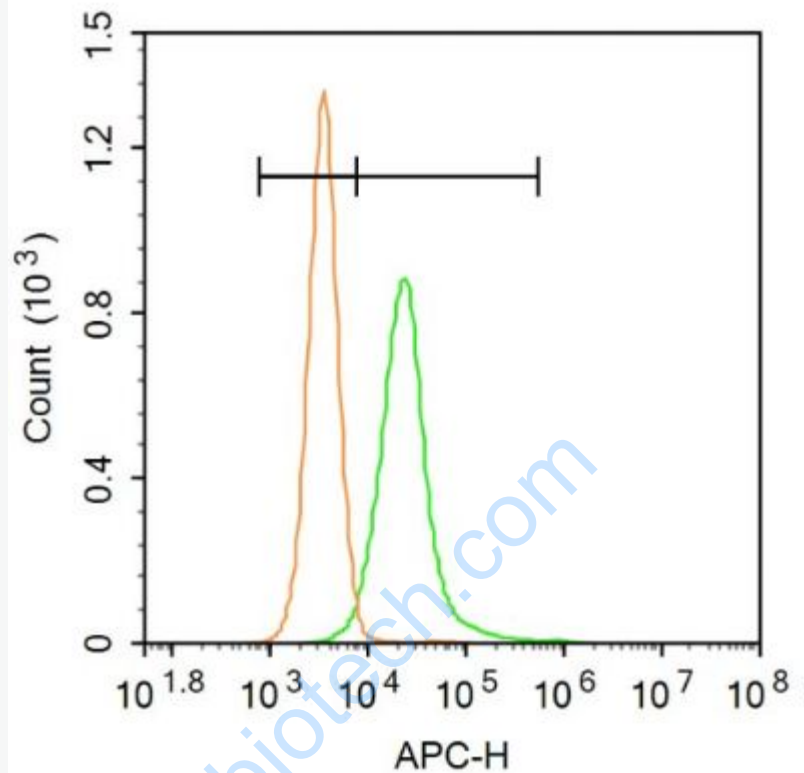
HL-60(Human) Cell Lysate at 30 ug

Primary: Anti-MHC class I (SL7335R) at 1/1000 dilution

Secondary: IRDye800CW Goat Anti-Rabbit IgG at 1/20000 dilution

Predicted band size: 40 kD

Observed band size: 42 kD



Blank control: A431.

Primary Antibody (green line): Rabbit Anti-MHC class I antibody (SL7335R)

Dilution: 3 μ g /10⁶ cells;

Isotype Control Antibody (orange line): Rabbit IgG .

Secondary Antibody: Goat anti-rabbit IgG-AF647

Dilution: 3 μ g /test.

Protocol

The cells were incubated in 5%BSA to block non-specific protein-protein interactions for 30 min at room temperature .Cells stained with Primary Antibody for 30 min at room temperature. The secondary antibody used for 40 min at room temperature. Acquisition of 20,000 events was performed.

