



Rabbit Anti-DLL1 antibody

SL7345R

| | |
|-------------------------------|---|
| Product Name: | DLL1 |
| Chinese Name: | Notch信号通路Delta样配体1抗体 |
| Alias: | Delta (Drosophila) like 1; Delta; Delta like 1 (Drosophila); Delta like 1; Delta like 1 protein; Delta like protein 1; Delta like protein 1 precursor; Delta, Drosophila, homolog of 1; Delta-like protein 1; Delta1; DL1; DLL 1; Dll1; DLL1_HUMAN; Drosophila Delta homolog 1; H-Delta-1; OTTHUMP00000017690. |
| Organism Species: | Rabbit |
| Clonality: | Polyclonal |
| React Species: | Human,Mouse,Rat,Chicken,Cow, |
| Applications: | WB=1:500-2000ELISA=1:500-1000IHC-P=1:400-800IHC-F=1:400-800ICC=1:100-500IF=1:100-500 (Paraffin sections need antigen repair) not yet tested in other applications. optimal dilutions/concentrations should be determined by the end user. |
| Molecular weight: | 76kDa |
| Cellular localization: | The cell membrane |
| Form: | Lyophilized or Liquid |
| Concentration: | 1mg/ml |
| immunogen: | KLH conjugated synthetic peptide derived from human DLL1:1-100/723<Extracellular> |
| Lsotype: | IgG |
| Purification: | affinity purified by Protein A |
| Storage Buffer: | 0.01M TBS(pH7.4) with 1% BSA, 0.03% Proclin300 and 50% Glycerol. |
| Storage: | Store at -20 °C for one year. Avoid repeated freeze/thaw cycles. The lyophilized antibody is stable at room temperature for at least one month and for greater than a year when kept at -20°C. When reconstituted in sterile pH 7.4 0.01M PBS or diluent of antibody the antibody is stable for at least two weeks at 2-4 °C. |
| PubMed: | PubMed |
| Product Detail: | The LIN-12/Notch family of transmembrane receptors is believed to play a central role in development by regulating cell fate decisions. Notch proteins have been found to be overexpressed or rearranged in human tumors. Ligands for Notch include Jagged, |

Jagged-2 and Delta. While blocking the differentiation of progenitor cells into the B cell lineage, Delta promotes the emergence of a population of cells with T cell/NK-cell characteristics. Delta is a membrane protein expressed in heart, pancreas, brain and muscle during gastrulation and early organogenesis, and in adult heart and lung.

Function:

Acts as a ligand for Notch receptors. Blocks the differentiation of progenitor cells into the B-cell lineage while promoting the emergence of a population of cells with the characteristics of a T-cell/NK-cell precursor.

Subunit:

Interacts with Notch receptors.

Subcellular Location:

Membrane.

Tissue Specificity:

Expressed in heart and pancreas, with lower expression in brain and muscle and almost no expression in placenta, lung, liver and kidney.

Post-translational modifications:

Ubiquitinated by MIB (MIB1 or MIB2), leading to its endocytosis and subsequent degradation.

Similarity:

Contains 1 DSL domain.

Contains 8 EGF-like domains.

SWISS:

O00548

Gene ID:

28514

Database links:

[Entrez Gene: 28514](#) Human

[Entrez Gene: 13388](#) Mouse

[Entrez Gene: 84010](#) Rat

[Omim: 606582](#) Human

[SwissProt: O00548](#) Human

[SwissProt: Q61483](#) Mouse

[SwissProt: P97677](#) Rat

[Unigene: 379912](#) Human

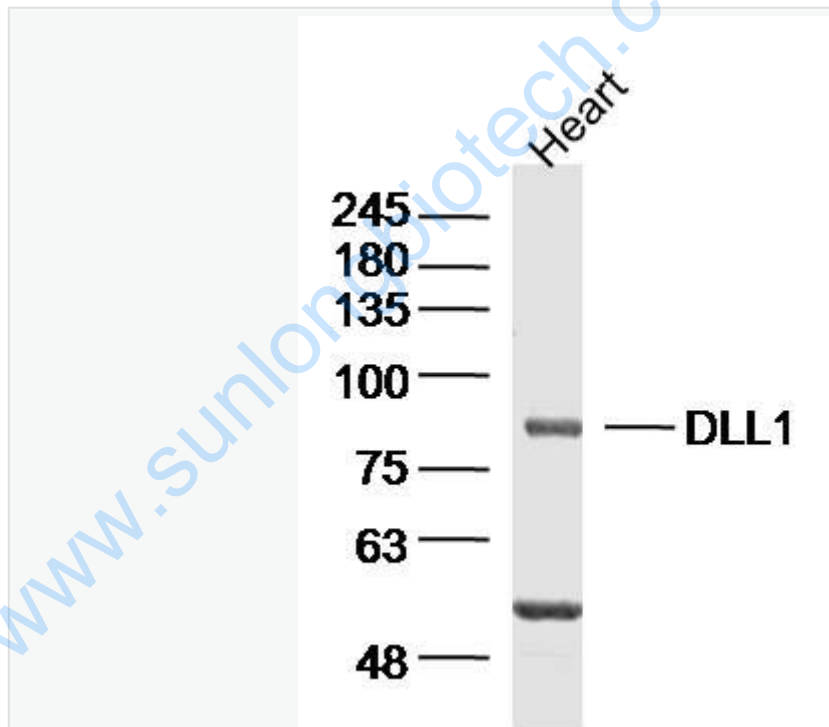
[Unigene: 4875](#) Mouse

[Unigene: 10628](#) Rat

Important Note:

This product as supplied is intended for research use only, not for use in human, therapeutic or diagnostic applications.

Picture:



Sample: Heart (Mouse) Lysate at 40 ug

Primary: Anti-DLL1(SL7345R) at 1/300 dilution

Secondary: IRDye800CW Goat Anti-Rabbit IgG at 1/20000 dilution

Predicted band size: 76kD

| | |
|--|--------------------------|
| | Observed band size: 81kD |
|--|--------------------------|

www.sunlongbiotech.com