



Rabbit Anti-Islet-1 antibody

SL7346R

Product Name:	Islet-1
Chinese Name:	胰岛素基因增强Binding protein1 抗体
Alias:	Insulin gene enhancer protein ISL 1; Insulin gene enhancer protein ISL-1; Insulin related protein; Isl 1; ISL LIM homeobox 1; ISL1; ISL1 transcription factor LIM homeodomain; ISL1 transcription factor, LIM/homeodomain (islet 1); ISL1 transcription factor, LIM/homeodomain; ISL1 HUMAN; Islet-1; Islet1.
Organism Species:	Rabbit
Clonality:	Polyclonal
React Species:	Human,Mouse,Rat,Cow,Horse,Sheep,
Applications:	WB=1:500-2000ELISA=1:500-1000IHC-P=1:400-800IHC-F=1:400-800ICC=1:100-500IF=1:100-500 (Paraffin sections need antigen repair) not yet tested in other applications. optimal dilutions/concentrations should be determined by the end user.
Molecular weight:	39kDa
Cellular localization:	The nucleus
Form:	Lyophilized or Liquid
Concentration:	1mg/1ml
immunogen:	KLH conjugated synthetic peptide derived from human Islet-1:
Lsotype:	IgG
Purification:	affinity purified by Protein A
Storage Buffer:	0.01M TBS(pH7.4) with 1% BSA, 0.03% Proclin300 and 50% Glycerol.
Storage:	Store at -20 °C for one year. Avoid repeated freeze/thaw cycles. The lyophilized antibody is stable at room temperature for at least one month and for greater than a year when kept at -20°C. When reconstituted in sterile pH 7.4 0.01M PBS or diluent of antibody the antibody is stable for at least two weeks at 2-4 °C.
PubMed:	PubMed
Product Detail:	This gene encodes a member of the LIM/homeodomain family of transcription factors. The encoded protein binds to the enhancer region of the insulin gene, among others, and may play an important role in regulating insulin gene expression. The encoded protein is central to the development of pancreatic cell lineages and may also be required for motor

neuron generation. Mutations in this gene have been associated with maturity-onset diabetes of the young. [provided by RefSeq, Jul 2008].

Function:

Binds to one of the cis-acting domain of the insulin gene enhancer.

Subcellular Location:

Nucleus.

Tissue Specificity:

Expressed in subsets of neurons of the adrenal medulla and dorsal root ganglion, inner nuclear and ganglion cell layers in the retina, the pineal and some regions of the brain.

Similarity:

Contains 1 homeobox DNA-binding domain.

Contains 2 LIM zinc-binding domains.

SWISS:

P61371

Gene ID:

3670

Database links:

[Entrez Gene: 3670](#)Human

[Entrez Gene: 16392](#)Mouse

[Entrez Gene: 64444](#)Rat

[Omim: 600366](#)Human

[SwissProt: P61371](#)Human

[SwissProt: P61372](#)Mouse

[SwissProt: P61374](#)Rat

[Unigene: 505](#)Human

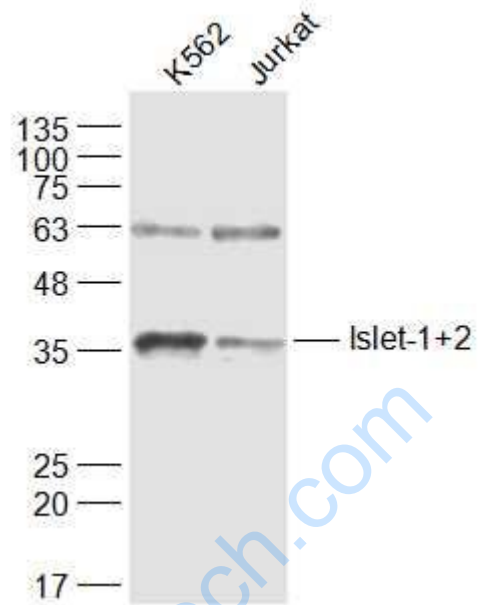
[Unigene: 42242](#)Mouse

[Unigene: 36202](#)Rat

Important Note:

This product as supplied is intended for research use only, not for use in human, therapeutic or diagnostic applications.

Picture:



Sample:

K562(Human) Cell Lysate at 30 ug

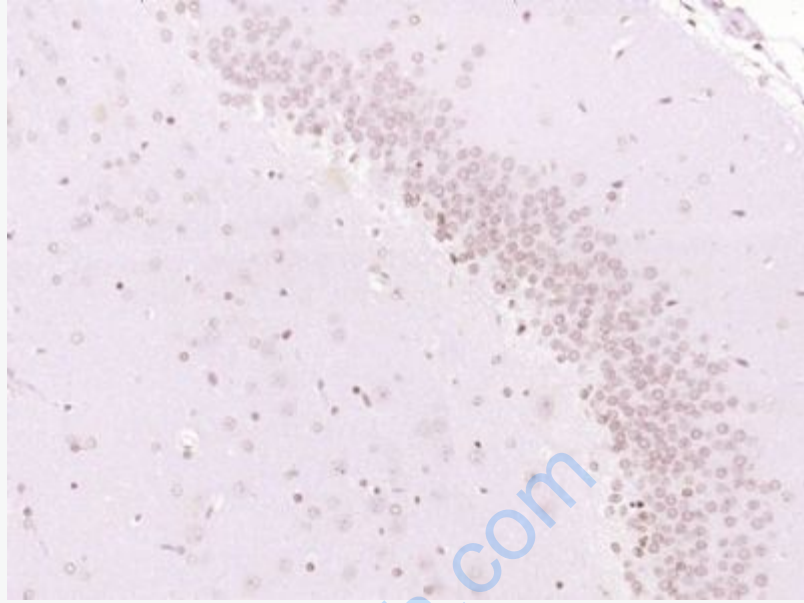
Jurkat(Human) Cell Lysate at 30 ug

Primary: Anti-Islet-1+2 (SL7346R) at 1/1000 dilution

Secondary: IRDye800CW Goat Anti-Rabbit IgG at 1/20000 dilution

Predicted band size: 39 kD

Observed band size: 37 kD



Paraformaldehyde-fixed, paraffin embedded (Rat brain); Antigen retrieval by boiling in sodium citrate buffer (pH6.0) for 15min; Block endogenous peroxidase by 3% hydrogen peroxide for 20 minutes; Blocking buffer (normal goat serum) at 37°C for 30min; Antibody incubation with (Islet-1) Polyclonal Antibody, Unconjugated (SL7346R) at 1:400 overnight at 4°C, followed by operating according to SP Kit(Rabbit) (sp-0023) instructions and DAB staining.