



## Rabbit Anti-CD200R antibody

SL7351R

<b>Product Name:</b>	CD200R
<b>Chinese Name:</b>	CD200受体抗体
<b>Alias:</b>	CD 200R; CD200 cell surface glycoprotein receptor; CD200 receptor 1; Cd200r1; Cell surface glycoprotein CD200 receptor 1; Cell surface glycoprotein OX2 receptor 1; Cell surface glycoprotein OX2 receptor; cell surface glycoprotein receptor CD200; CRTR 2; CRTR2; HCRTR2; MO2R1 HUMAN; MOX2 receptor; MOX2R; OX2R.
<b>Organism Species:</b>	Rabbit
<b>Clonality:</b>	Polyclonal
<b>React Species:</b>	Human,
<b>Applications:</b>	WB=1:500-2000ELISA=1:500-1000IHC-P=1:400-800IHC-F=1:400-800Flow-Cyt=2µg/TestICC=1:100-500IF=1:100-500 (Paraffin sections need antigen repair) not yet tested in other applications. optimal dilutions/concentrations should be determined by the end user.
<b>Molecular weight:</b>	34kDa
<b>Cellular localization:</b>	The cell membrane
<b>Form:</b>	Lyophilized or Liquid
<b>Concentration:</b>	1mg/ml
<b>immunogen:</b>	KLH conjugated synthetic peptide derived from human CD200R:151-250/325<Extracellular>
<b>Lsotype:</b>	IgG
<b>Purification:</b>	affinity purified by Protein A
<b>Storage Buffer:</b>	0.01M TBS(pH7.4) with 1% BSA, 0.03% Proclin300 and 50% Glycerol.
<b>Storage:</b>	Store at -20 °C for one year. Avoid repeated freeze/thaw cycles. The lyophilized antibody is stable at room temperature for at least one month and for greater than a year when kept at -20°C. When reconstituted in sterile pH 7.4 0.01M PBS or diluent of antibody the antibody is stable for at least two weeks at 2-4 °C.
<b>PubMed:</b>	<a href="#">PubMed</a>
<b>Product Detail:</b>	This gene encodes a receptor for the OX-2 membrane glycoprotein. Both the receptor and substrate are cell surface glycoproteins containing two immunoglobulin-like domains. This receptor is restricted to the surfaces of myeloid lineage cells and the

receptor-substrate interaction may function as a myeloid downregulatory signal. Mouse studies of a related gene suggest that this interaction may control myeloid function in a tissue-specific manner. Alternative splicing of this gene results in multiple transcript variants.

**Function:**

Receptor for the CD200/OX2 cell surface glycoprotein. Also binds to HHV-8 K14 viral CD200 homolog with identical affinity and kinetics as the host CD200.

**Subcellular Location:**

Secreted and Cell membrane.

**Tissue Specificity:**

Expressed in granulocytes, monocytes, most T cells, neutrophils, basophils and a subset of NK, NKT and B cells (at protein level). Expressed in bone marrow, lymph nodes, spleen, lung, liver, spinal cord, kidney. Expressed in monocyte-derived dendritic and mast cells.

**Post-translational modifications:**

The mature form of isoform 2 and/or isoform 4 starts at sequence position 27 of the corresponding isoform.

**Similarity:**

Belongs to the CD200R family. Contains 1 Ig-like C2-type (immunoglobulin-like) domain. Contains 1 Ig-like V-type (immunoglobulin-like) domain.

**SWISS:**

Q6Q8B3

**Gene ID:**

131450

**Database links:**

[Entrez Gene: 131450](#)Human

[Omim: 607546](#)Human

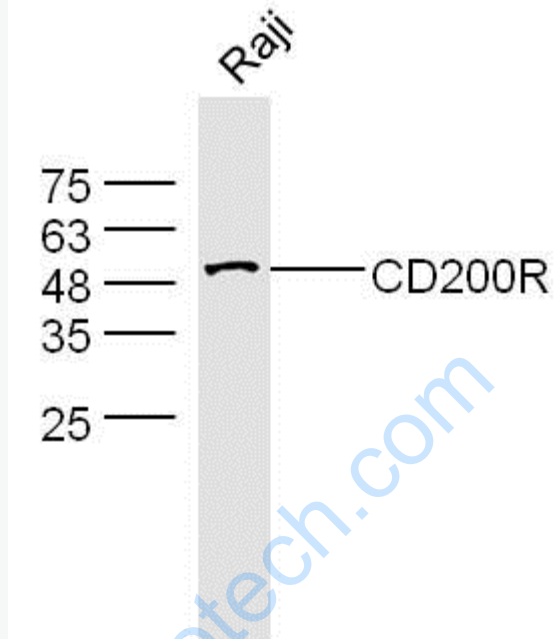
[SwissProt: Q8TD46](#)Human

[Unigene: 309158](#)Human

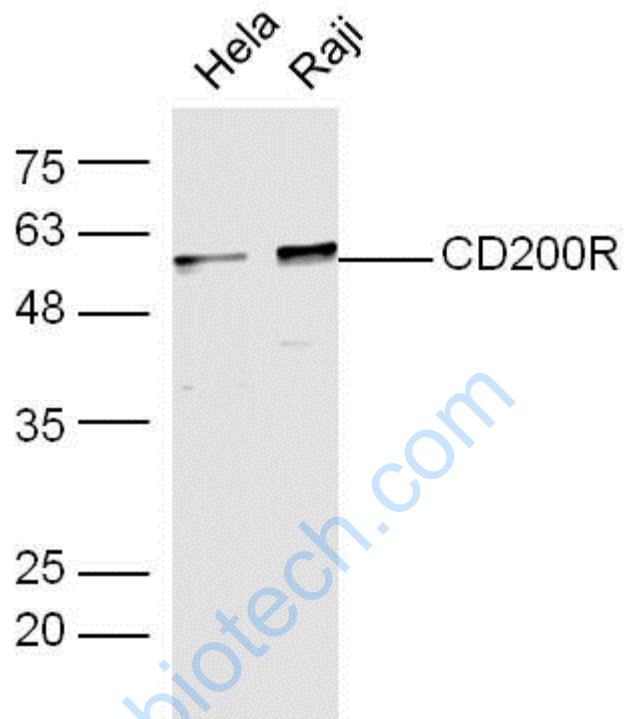
**Important Note:**

This product as supplied is intended for research use only, not for use in human, therapeutic or diagnostic applications.

Picture:



Sample: Raji(Human) Cell Lysate at 30 ug Primary: Anti-CD200R (SL7351R) at 1/300 dilution Secondary: IRDye800CW Goat Anti-Rabbit IgG at 1/20000 dilution  
Predicted band size: 33 kD Observed band size: 53 kD



Sample: hela(Human) Cell Lysate at 30 ug

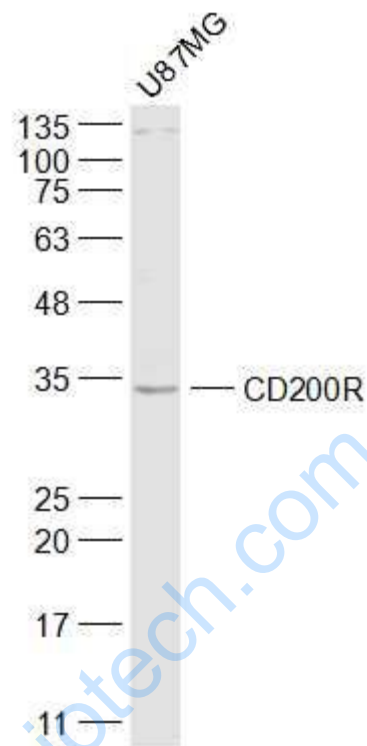
Raji(Human) Cell Lysate at 30 ug

Primary: Anti-CD200R (SL7351R) at 1/300 dilution

Secondary: IRDye800CW Goat Anti-Rabbit IgG at 1/20000 dilution

Predicted band size: 33 kD

Observed band size: 58 kD



Sample:

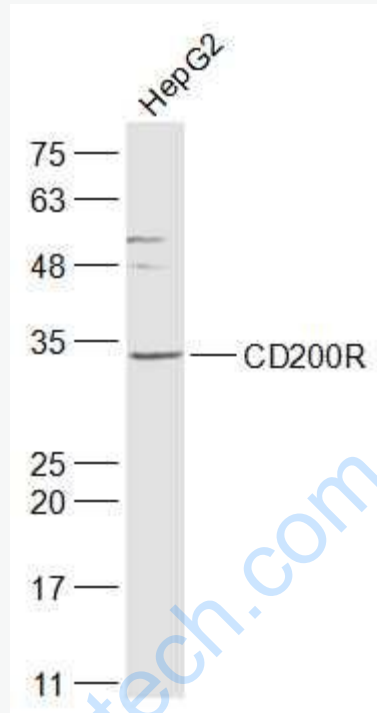
U87MG(Human) Cell Lysate at 30 ug

Primary: Anti-CD200R (SL7351R) at 1/1000 dilution

Secondary: IRDye800CW Goat Anti-Rabbit IgG at 1/20000 dilution

Predicted band size: 34 kD

Observed band size: 34 kD



Sample:

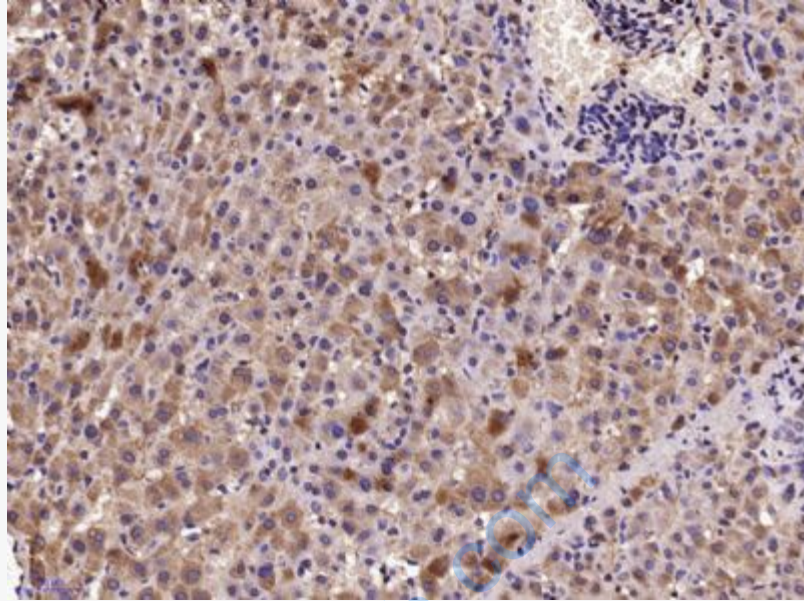
HepG2(Human) Cell Lysate at 30 ug

Primary: Anti-CD200R (SL7351R) at 1/1000 dilution

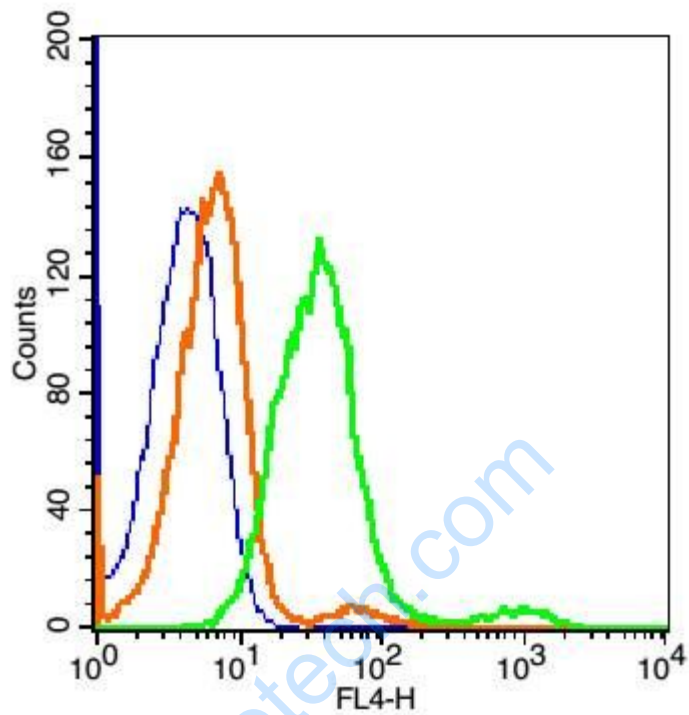
Secondary: IRDye800CW Goat Anti-Rabbit IgG at 1/20000 dilution

Predicted band size: 34 kD

Observed band size: 34 kD



Paraformaldehyde-fixed, paraffin embedded (Human liver); Antigen retrieval by microwave in sodium citrate buffer (pH6.0) ; Block endogenous peroxidase by 3% hydrogen peroxide for 30 minutes; Blocking buffer (3% BSA) at RT for 30min; Antibody incubation with (CD200R) Polyclonal Antibody, Unconjugated (SL7351R) at 1:400 overnight at 4°C, followed by conjugation to the secondary antibody (labeled with HRP) and DAB staining.



Blank control:Hepg2 Cells(blue).

Primary Antibody: Rabbit Anti-CD200R/AF647 Conjugated antibody (SL7351R),

Dilution: 5 $\mu$ g in 100  $\mu$ L 1X PBS containing 0.5% BSA;

Isotype Control Antibody: Rabbit IgG/AF647(orange) ,used under the same conditions.