



Rabbit Anti-Topoisomerase III antibody

SL7360R

Product Name:	Topoisomerase III
Chinese Name:	DNA拓普西异构酶Topo III α 抗体
Alias:	DNA topoisomerase 3 alpha; DNA topoisomerase 3-alpha; DNA topoisomerase III alpha; TOP 3; TOP3; TOP3A; TOP3A_HUMAN; topoisomerase (DNA) III alpha; topoisomerase (DNA) III; topoisomerase III alpha; Topo-III α .
Organism Species:	Rabbit
Clonality:	Polyclonal
React Species:	Human,Mouse,Rat,
Applications:	ELISA=1:500-1000IHC-P=1:400-800IHC-F=1:400-800ICC=1:100-500IF=1:100-500 (Paraffin sections need antigen repair) not yet tested in other applications. optimal dilutions/concentrations should be determined by the end user.
Molecular weight:	112kDa
Cellular localization:	The nucleuscytoplasmic
Form:	Lyophilized or Liquid
Concentration:	1mg/ml
immunogen:	KLH conjugated synthetic peptide derived from human Topoisomerase III:271-370/1001
Lsotype:	IgG
Purification:	affinity purified by Protein A
Storage Buffer:	0.01M TBS(pH7.4) with 1% BSA, 0.03% Proclin300 and 50% Glycerol.
Storage:	Store at -20 °C for one year. Avoid repeated freeze/thaw cycles. The lyophilized antibody is stable at room temperature for at least one month and for greater than a year when kept at -20°C. When reconstituted in sterile pH 7.4 0.01M PBS or diluent of antibody the antibody is stable for at least two weeks at 2-4 °C.
PubMed:	PubMed
Product Detail:	This gene encodes a DNA topoisomerase, an enzyme that controls and alters the topologic states of DNA during transcription. This enzyme catalyzes the transient breaking and rejoining of a single strand of DNA which allows the strands to pass through one another, thus reducing the number of supercoils and altering the topology of DNA. This enzyme forms a complex with BLM which functions in the regulation of

recombination in somatic cells. [provided by RefSeq, Jul 2008]

Function:

Reduces the number of supercoils in a highly negatively supercoiled DNA. Essential component of the RMI complex, a complex that plays an important role in the processing of homologous recombination intermediates to limit DNA crossover formation in cells.

Tissue Specificity:

High expression is found in testis, heart, skeletal muscle and pancreas.

Similarity:

Belongs to the prokaryotic type I/III topoisomerase family.
Contains 1 Toprim domain.

SWISS:

Q13472

Gene ID:

7156

Database links:

[Entrez Gene: 7156](#) Human

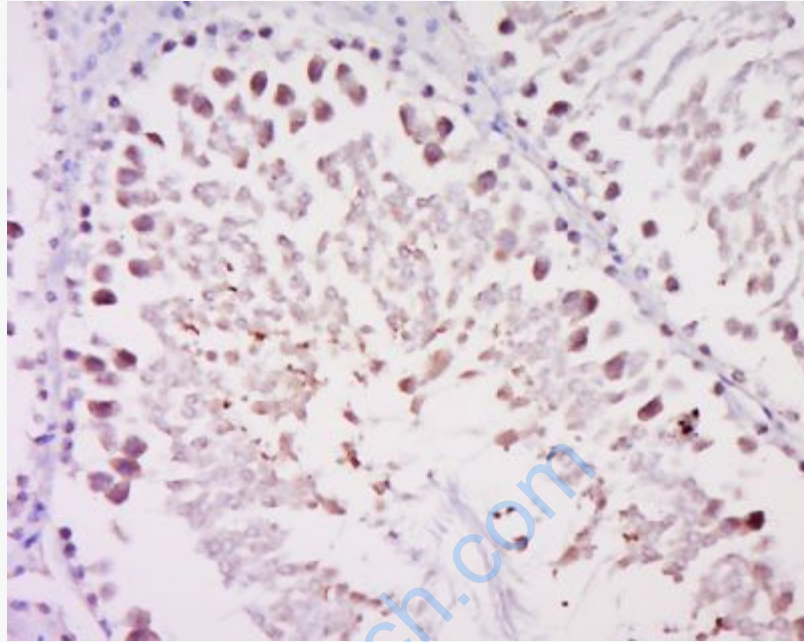
[Omim: 601243](#) Human

[SwissProt: Q13472](#) Human

[Unigene: 592115](#) Human

Important Note:

This product as supplied is intended for research use only, not for use in human, therapeutic or diagnostic applications.



Picture:

Tissue/cell: Rat testis tissue; 4% Paraformaldehyde-fixed and paraffin-embedded;
Antigen retrieval: citrate buffer (0.01M, pH 6.0), Boiling bathing for 15min; Block endogenous peroxidase by 3% Hydrogen peroxide for 30min; Blocking buffer (normal goat serum,C-0005) at 37°C for 20 min;
Incubation: Anti-TOP3 Polyclonal Antibody, Unconjugated(SL7360R) 1:500, overnight at 4°C, followed by conjugation to the secondary antibody(SP-0023) and DAB(C-0010) staining