



Rabbit Anti-ADH1 antibody

SL7365R

Product Name:	ADH1
Chinese Name:	乙醇脱氢酶1抗体
Alias:	ADH1A + ADH1B + ADH1C; ADH alpha subunit; ADH beta subunit; ADH gamma subunit; ADH1; ADH1A; ADH1B; ADH1C; ADH2; ADH3; ADH1A_HUMAN; ADH1B_HUMAN; ADH1G_HUMAN; Alcohol dehydrogenase 1A (class I) alpha polypeptide; Alcohol dehydrogenase 1A; Alcohol dehydrogenase 1B (class I) beta polypeptide; Alcohol dehydrogenase 1B; Alcohol dehydrogenase 1C (class I) gamma polypeptide; Alcohol dehydrogenase 1C; Alcohol dehydrogenase 2 (class I) beta polypeptide; Alcohol dehydrogenase 2; Alcohol dehydrogenase 3 (class I) gamma polypeptide; Alcohol dehydrogenase 3; Alcohol dehydrogenase alpha subunit; Alcohol dehydrogenase; Alcohol dehydrogenase beta subunit; Alcohol dehydrogenase gamma subunit; Alcohol dehydrogenase 1B (class I) beta polypeptide; Aldehyde reductase.
Organism Species:	Rabbit
Clonality:	Polyclonal
React Species:	Human,
Applications:	WB=1:500-2000ELISA=1:500-1000IHC-P=1:400-800IHC-F=1:400-800ICC=1:100-500IF=1:100-500 (Paraffin sections need antigen repair) not yet tested in other applications. optimal dilutions/concentrations should be determined by the end user.
Molecular weight:	40kDa
Cellular localization:	cytoplasmic
Form:	Lyophilized or Liquid
Concentration:	1mg/ml
immunogen:	KLH conjugated synthetic peptide derived from human Alcohol dehydrogenase 1A:201-300/375
Lsotype:	IgG
Purification:	affinity purified by Protein A
Storage Buffer:	0.01M TBS(pH7.4) with 1% BSA, 0.03% Proclin300 and 50% Glycerol.
Storage:	Store at -20 °C for one year. Avoid repeated freeze/thaw cycles. The lyophilized antibody is stable at room temperature for at least one month and for greater than a year

	when kept at -20°C. When reconstituted in sterile pH 7.4 0.01M PBS or diluent of antibody the antibody is stable for at least two weeks at 2-4 °C.
PubMed:	PubMed
Product Detail:	<p>ADH (Alcohol dehydrogenase) consists of a dimer of identical or nonidentical chains of three types; alpha, beta and gamma. Members of this enzyme family metabolize a wide variety of substrates, including ethanol, retinol, other aliphatic alcohols, hydroxysteroids, and lipid peroxidation products. There are 7 different ADH's isozymes in human: three belongs to class I: alpha, beta, and gamma, one to class II: pi, one to class III: chi, one to class IV: ADH7 and one to class V: ADH6.</p> <p>Subcellular Location: Cytoplasmic.</p> <p>Similarity: Belongs to the zinc-containing alcohol dehydrogenase family.</p> <p>SWISS: P07327</p> <p>Gene ID: 124</p> <p>Database links:</p> <p>Entrez Gene: 124 Human Entrez Gene: 125 Human Entrez Gene: 126 Human Entrez Gene: 11522 Mouse Entrez Gene: 26876 Mouse Entrez Gene: 24172 Rat Entrez Gene: 29646 Rat Omim: 103740 Human SwissProt: P00325 Human SwissProt: P00326 Human SwissProt: P07327 Human SwissProt: Q496S1 Mouse</p>

[SwissProt: Q548K2](#) Mouse

[SwissProt: Q9QYY9](#) Mouse

[SwissProt: Q64563](#) Rat

[Unigene: 1219](#) Human

[Unigene: 4](#) Human

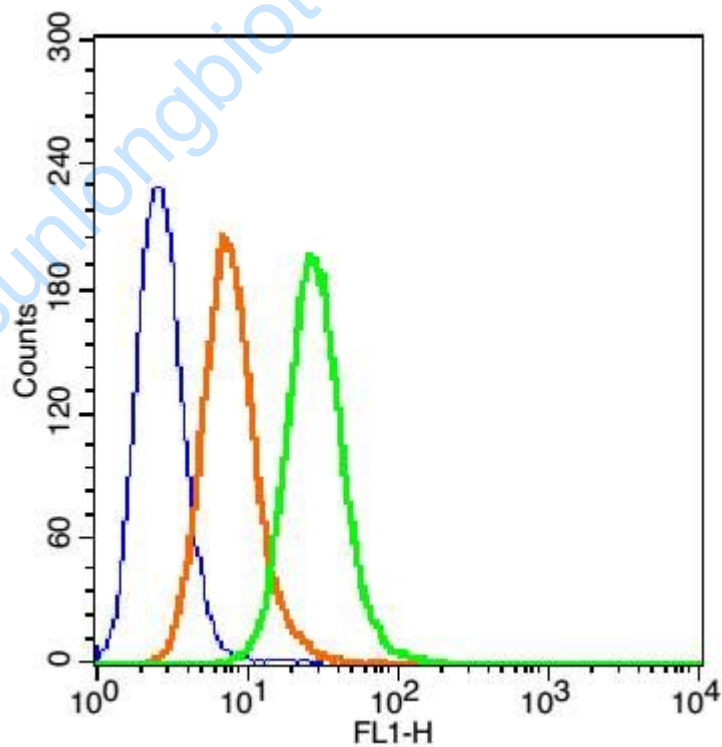
[Unigene: 654433](#) Human

[Unigene: 654537](#) Human

Important Note:

This product as supplied is intended for research use only, not for use in human, therapeutic or diagnostic applications.

Picture:



Blank control(blue): MCF7 Cells(fixed with 2% paraformaldehyde (10 min) and then permeabilized with ice-cold 90% methanol for 30 min on ice).

Primary Antibody: Rabbit Anti-ADH1/FITC Conjugated antibody (SL7365R),
Dilution: 1 μ g in 100 μ L 1X PBS containing 0.5% BSA;
Isotype Control Antibody: Rabbit IgG/FITC(orange) ,used under the same
conditions.

www.sunlongbiotech.com