



Rabbit Anti-TIMM23 antibody

SL7375R

Product Name:	TIMM23
Chinese Name:	Mitochondrion前体蛋白TIMM23抗体
Alias:	MGC22767; MGC93478; Mitochondrial import inner membrane translocase subunit Tim23; Predicted protein of HQ1197; PRO1197; TIM23; TIM23_HUMAN; TIM-23; TIMM 23; TIMM23; Translocase of inner mitochondrial membrane 23 (yeast) homolog; Translocase of inner mitochondrial membrane 23 homolog (yeast); Translocase of inner mitochondrial membrane 23 homolog B; Translocation of mitochondrial precursor proteins.
Organism Species:	Rabbit
Clonality:	Polyclonal
React Species:	Human,Mouse,Rat,Dog,Pig,Cow,Horse,Rabbit,
Applications:	ELISA=1:500-1000IHC-P=1:400-800IHC-F=1:400-800ICC=1:100-500IF=1:100-500 (Paraffin sections need antigen repair) not yet tested in other applications. optimal dilutions/concentrations should be determined by the end user.
Molecular weight:	22kDa
Cellular localization:	cytoplasmicMitochondrion
Form:	Lyophilized or Liquid
Concentration:	1mg/ml
immunogen:	KLH conjugated synthetic peptide derived from human TIMM23:111-209/209
Lsotype:	IgG
Purification:	affinity purified by Protein A
Storage Buffer:	0.01M TBS(pH7.4) with 1% BSA, 0.03% Proclin300 and 50% Glycerol.
Storage:	Store at -20 °C for one year. Avoid repeated freeze/thaw cycles. The lyophilized antibody is stable at room temperature for at least one month and for greater than a year when kept at -20°C. When reconstituted in sterile pH 7.4 0.01M PBS or diluent of antibody the antibody is stable for at least two weeks at 2-4 °C.
PubMed:	PubMed
Product Detail:	TIMM23 nomenclature and NM_006327.2 were associated with GeneID:10431 in build 37.1. Because of assembly problems in this region, it was later determined that

GeneID:100287932 correctly represents the location of TIMM23. TIMM23 is now associated with GeneID:100287932 and NM_006327.2. [17 Mar 2010]

Function:

TIMM23 belongs to the Tim17/Tim22/Tim23 family and is an essential component of the TIM23 complex, a complex that mediates the translocation of transit peptide-containing proteins across the mitochondrial inner membrane.

Subunit:

Component of the TIM23 complex at least composed of TIMM23, TIMM17 (TIMM17A or TIMM17B) and TIMM50; within this complex, directly interacts with TIMM50. The complex interacts with the TIMM44 component of the PAM complex and with DNAJC15.

Subcellular Location:

Mitochondrion inner membrane; Multi-pass membrane protein.

Similarity:

Belongs to the Tim17/Tim22/Tim23 family.

SWISS:

O14925

Gene ID:

10431

Database links:

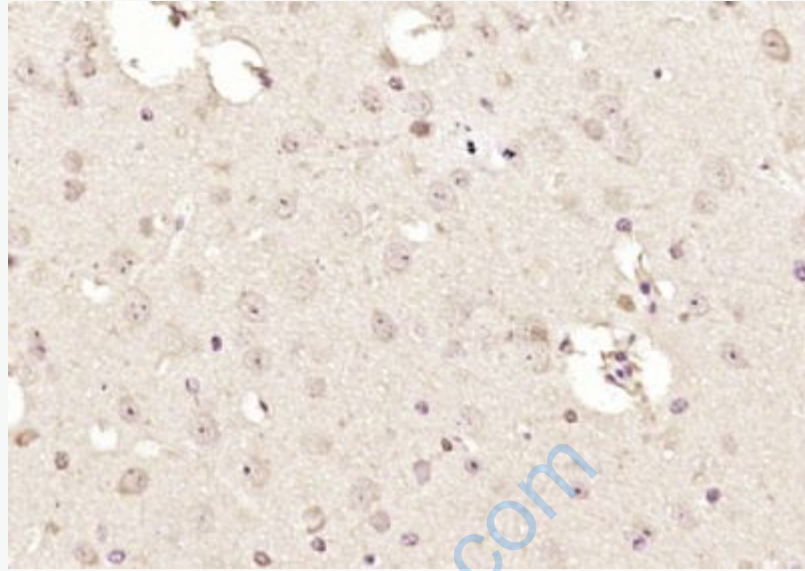
[Entrez Gene: 10431](#) Human

[Omim: 605034](#) Human

[SwissProt: O14925](#) Human

Important Note:

This product as supplied is intended for research use only, not for use in human, therapeutic or diagnostic applications.



Picture:

Paraformaldehyde-fixed, paraffin embedded (mouse brain); Antigen retrieval by boiling in sodium citrate buffer (pH6.0) for 15min; Block endogenous peroxidase by 3% hydrogen peroxide for 20 minutes; Blocking buffer (normal goat serum) at 37°C for 30min; Antibody incubation with (TIMM23) Polyclonal Antibody, Unconjugated (SL7375R) at 1:200 overnight at 4°C, followed by operating according to SP Kit(Rabbit) (sp-0023) instructions and DAB staining.