



## Rabbit Anti-SEC61 beta antibody

SL7404R

<b>Product Name:</b>	SEC61 beta
<b>Chinese Name:</b>	TransporterSEC61 $\beta$ 亚基抗体
<b>Alias:</b>	SEC61B Protein translocation complex beta; Protein transport protein SEC61 beta subunit; Protein transport protein Sec61 subunit beta; SEC 61B; SC61B_HUMAN; SEC61; SEC61 B; Sec61 beta subunit; Sec61 complex beta subunit.
<b>Organism Species:</b>	Rabbit
<b>Clonality:</b>	Polyclonal
<b>React Species:</b>	Human,Mouse,Rat,Chicken,Cow,Sheep,
<b>Applications:</b>	ELISA=1:500-1000IHC-P=1:400-800IHC-F=1:400-800ICC=1:100-500IF=1:100-500 (Paraffin sections need antigen repair) not yet tested in other applications. optimal dilutions/concentrations should be determined by the end user.
<b>Molecular weight:</b>	9.8kDa
<b>Cellular localization:</b>	The cell membrane
<b>Form:</b>	Lyophilized or Liquid
<b>Concentration:</b>	1mg/ml
<b>immunogen:</b>	KLH conjugated synthetic peptide derived from human SEC61 beta:2-50/96
<b>Lsotype:</b>	IgG
<b>Purification:</b>	affinity purified by Protein A
<b>Storage Buffer:</b>	0.01M TBS(pH7.4) with 1% BSA, 0.03% Proclin300 and 50% Glycerol.
<b>Storage:</b>	Store at -20 °C for one year. Avoid repeated freeze/thaw cycles. The lyophilized antibody is stable at room temperature for at least one month and for greater than a year when kept at -20°C. When reconstituted in sterile pH 7.4 0.01M PBS or diluent of antibody the antibody is stable for at least two weeks at 2-4 °C.
<b>PubMed:</b>	<a href="#">PubMed</a>
<b>Product Detail:</b>	The Sec61 complex is the central component of the protein translocation apparatus of the endoplasmic reticulum (ER) membrane. Oligomers of the Sec61 complex form a transmembrane channel where proteins are translocated across and integrated into the ER membrane. This complex consists of three membrane proteins- alpha, beta, and gamma. This gene encodes the beta-subunit protein. The Sec61 subunits are also

observed in the post-ER compartment, suggesting that these proteins can escape the ER and recycle back. There is evidence for multiple polyadenylated sites for this transcript. [provided by RefSeq, Jul 2008]

**Function:**

Necessary for protein translocation in the endoplasmic reticulum.

**Subunit:**

Heterotrimeric complex composed of SEC61-alpha, SEC61-beta and SEC61-gamma. Part of a complex composed of SEC61, SEC62 and SEC63. Interacts with SEC62.

**Similarity:**

Belongs to the SEC61-beta family.

**SWISS:**

P60468

**Gene ID:**

10952

**Database links:**

[Entrez Gene: 10952](#) Human

[Entrez Gene: 66212](#) Mouse

[Entrez Gene: 298068](#) Rat

[Omim: 609214](#) Human

[SwissProt: P60467](#) Dog

[SwissProt: P60468](#) Human

[SwissProt: Q9CQS8](#) Mouse

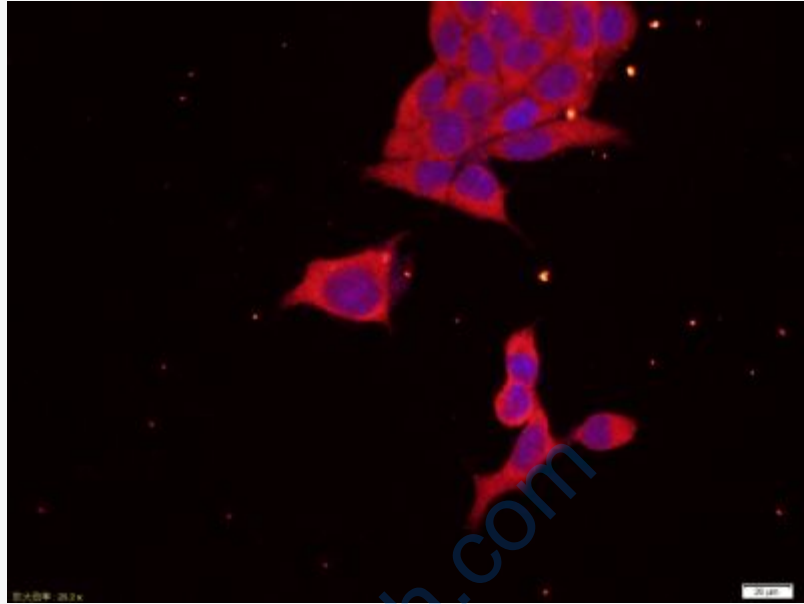
[Unigene: 191887](#) Human

[Unigene: 20188](#) Mouse

[Unigene: 103030](#) Rat

**Important Note:**

This product as supplied is intended for research use only, not for use in human, therapeutic or diagnostic applications.



**Picture:**

Tissue/cell: Human 293FT cell;4% Paraformaldehyde-fixed;

Blocking buffer (normal goat serum,C-0005) at 37°C for 20 min;

Incubation: Anti-SEC61 beta Polyclonal Antibody, Unconjugated(SL7404R) 1:200, overnight at 4°C; The secondary antibody was Goat Anti-Rabbit IgG, Cy5 conjugated(SL7404R)used at 1:200 dilution for 40 minutes at 37°C.

DAPI(5ug/ml,blue,C-0033) was used to stain the cell nuclei