



Rabbit Anti-ZDHHC20 antibody

SL7418R

| | |
|-------------------------------|--|
| Product Name: | ZDHHC20 |
| Chinese Name: | 锌指结构蛋白酶20抗体 |
| Alias: | DHHC-20; Probable palmitoyltransferase ZDHHC20; ZDH20_HUMAN; ZDHHC20; Zinc finger DHHC domain-containing protein 20. |
| Organism Species: | Rabbit |
| Clonality: | Polyclonal |
| React Species: | Human,Mouse,Rat,Dog,Horse,Rabbit,Sheep, |
| Applications: | WB=1:500-2000ELISA=1:500-1000IHC-P=1:400-800IHC-F=1:400-800ICC=1:100-500IF=1:100-500 (Paraffin sections need antigen repair) not yet tested in other applications. optimal dilutions/concentrations should be determined by the end user. |
| Molecular weight: | 42kDa |
| Cellular localization: | The cell membrane |
| Form: | Lyophilized or Liquid |
| Concentration: | 1mg/ml |
| immunogen: | KLH conjugated synthetic peptide derived from human DHHC-20:241-365/365 |
| Lsotype: | IgG |
| Purification: | affinity purified by Protein A |
| Storage Buffer: | 0.01M TBS(pH7.4) with 1% BSA, 0.03% Proclin300 and 50% Glycerol. |
| Storage: | Store at -20 °C for one year. Avoid repeated freeze/thaw cycles. The lyophilized antibody is stable at room temperature for at least one month and for greater than a year when kept at -20°C. When reconstituted in sterile pH 7.4 0.01M PBS or diluent of antibody the antibody is stable for at least two weeks at 2-4 °C. |
| PubMed: | PubMed |
| Product Detail: | Zinc-finger proteins contain DNA-binding domains and have a wide variety of functions, most of which encompass some form of transcriptional activation or repression. ZDHHC20 (zinc finger, DHHC-type containing 20) is a 365 amino acid multi-pass membrane protein that contains one DHHC-type zinc finger and is thought to function as a palmitoyltransferase, catalyzing the transformation of palmitoyl-CoA and a cysteine-conjugated protein to an S-palmitoyl protein and free CoA. In response to |

DNA damage, ZDHHC20, which exists as multiple alternatively spliced isoforms, may be phosphorylated by ATM or ATR. The gene encoding ZDHHC20 maps to human chromosome 13, which houses over 400 genes, such as BRCA2 and RB1, and comprises nearly 4% of the human genome.

Function:

Belongs to the DHHC palmitoyltransferase family. Contains 1 DHHC-type zinc finger.

Subcellular Location:

Membrane; Multi-pass membrane protein (Potential).

Post-translational modifications:

Phosphorylated upon DNA damage, probably by ATM or ATR.

Similarity:

Belongs to the DHHC palmitoyltransferase family.
Contains 1 DHHC-type zinc finger.

SWISS:

Q5W0Z9

Gene ID:

253832

Database links:

[Entrez Gene: 253832](#) Human

[Entrez Gene: 75965](#) Mouse

[Entrez Gene: 305923](#) Rat

[SwissProt: Q5W0Z9](#) Human

[SwissProt: Q5Y5T1](#) Mouse

[Unigene: 564611](#) Human

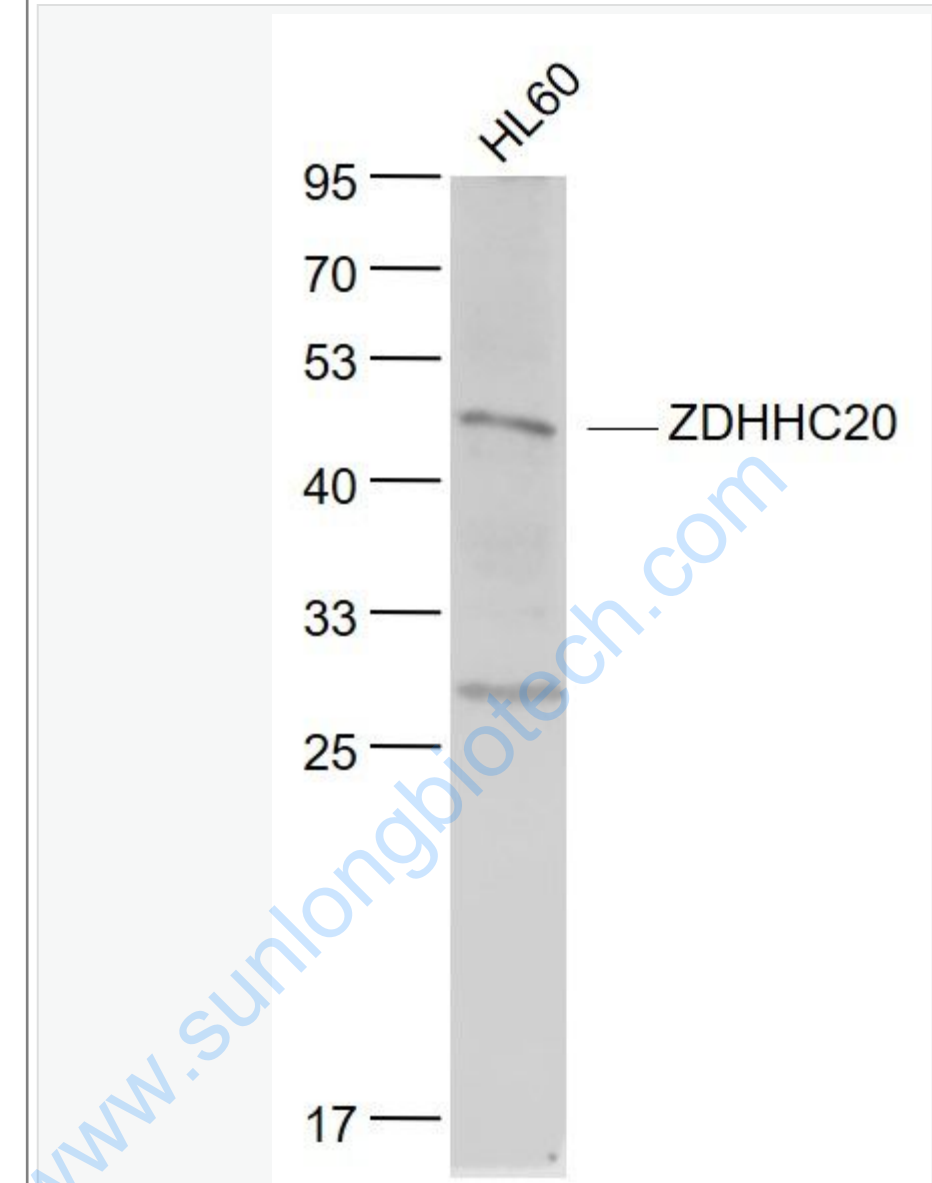
[Unigene: 29044](#) Mouse

[Unigene: 22849](#) Rat

Important Note:

This product as supplied is intended for research use only, not for use in human, therapeutic or diagnostic applications.

Picture:



Sample:

HL60(Human) Cell Lysate at 30 ug

Primary: Anti- ZDHHC20 (SL7418R) at 1/1000 dilution

Secondary: IRDye800CW Goat Anti-Rabbit IgG at 1/20000 dilution

Predicted band size: 42 kD

Observed band size: 44 kD

