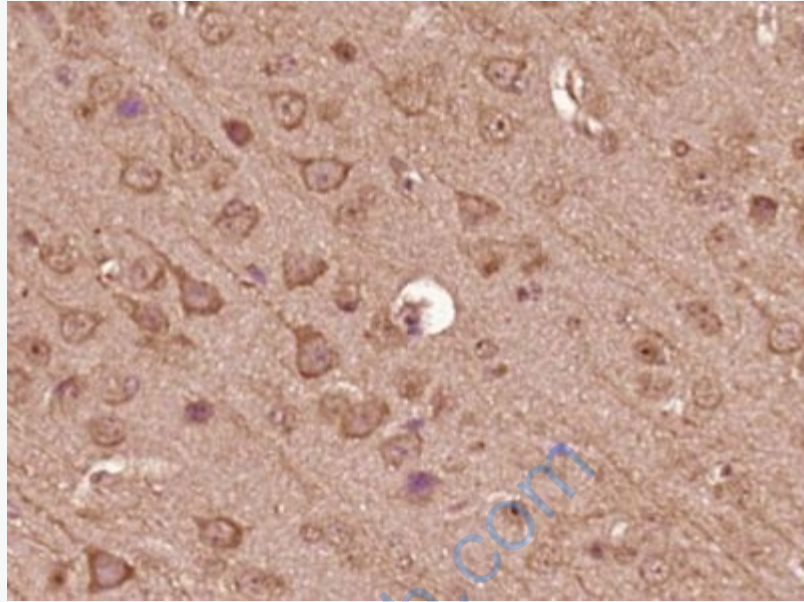




Rabbit Anti-TBC1D15 antibody

SL7422R

| | |
|-------------------------------|---|
| Product Name: | TBC1D15 |
| Chinese Name: | TBC结构域家族D15蛋白抗体 |
| Alias: | DKFZp686M1379; DKFZp761D0223; FLJ12085; FLJ33191; GAP for RAB7; GTPase-activating protein RAB7; RAB7 GAP; Rab7-GAP; TBC1 domain family member 15; TBC15_HUMAN; Tbc1d15; Tre 2 budding uninhibited by benzimidazole cell division cycle 16 domain, domain family member 15; Tre2/Bub2/Cdc16 domain family member 15. |
| Organism Species: | Rabbit |
| Clonality: | Polyclonal |
| React Species: | Human,Mouse,Rat, |
| Applications: | ELISA=1:500-1000IHC-P=1:400-800IHC-F=1:400-800ICC=1:100-500IF=1:100-500 (Paraffin sections need antigen repair) not yet tested in other applications. optimal dilutions/concentrations should be determined by the end user. |
| Molecular weight: | 79kDa |
| Cellular localization: | cytoplasmic |
| Form: | Lyophilized or Liquid |
| Concentration: | 1mg/ml |
| immunogen: | KLH conjugated synthetic peptide derived from human TBC1D15:1-100/237 |
| Lsotype: | IgG |
| Purification: | affinity purified by Protein A |
| Storage Buffer: | 0.01M TBS(pH7.4) with 1% BSA, 0.03% Proclin300 and 50% Glycerol. |
| Storage: | Store at -20 °C for one year. Avoid repeated freeze/thaw cycles. The lyophilized antibody is stable at room temperature for at least one month and for greater than a year when kept at -20°C. When reconstituted in sterile pH 7.4 0.01M PBS or diluent of antibody the antibody is stable for at least two weeks at 2-4 °C. |
| PubMed: | PubMed |
| Product Detail: | |



Picture:

Paraformaldehyde-fixed, paraffin embedded (Mouse brain); Antigen retrieval by boiling in sodium citrate buffer (pH6.0) for 15min; Block endogenous peroxidase by 3% hydrogen peroxide for 20 minutes; Blocking buffer (normal goat serum) at 37°C for 30min; Antibody incubation with (TBC1D15) Polyclonal Antibody, Unconjugated (SL7422R) at 1:400 overnight at 4°C, followed by operating according to SP Kit(Rabbit) (sp-0023) instructions and DAB staining.