



## Rabbit Anti-FKBP-1A/FKBP12 antibody

SL7450R

|                               |   |
|-------------------------------|---|
| <b>Product Name:</b>          | FKBP-1A/FKBP12  |
| <b>Chinese Name:</b>          | 肽基脯氨酰顺反异构酶FKBP12抗体  |
| <b>Alias:</b>                 | 12 kDa FK506-binding protein; 12 kDa FKBP; FK506 binding protein 1; FK506 binding protein 12; FK506 binding protein 1A 12kDa; FK506 binding protein 1A; FK506 binding protein T cell 12 kD; FK506-binding protein 1A; FKBP1A_HUMAN; FKBP 12; FKBP 1A; FKBP-12; FKBP-1A; FKBP1; FKBP12; FKBP12 Exip3; FKBP12C; FKBP1A; Immunophilin FKBP12; Peptidyl prolyl cis trans isomerase; Peptidyl-prolyl cis-trans isomerase; Peptidyl-prolyl cis-trans isomerase FKBP1A; PKC12; PKCI2; PPIase; PPIase FKBP1A; Protein kinase C inhibitor 2; Rotamase. |
| <b>Organism Species:</b>      | Rabbit  |
| <b>Clonality:</b>             | Polyclonal  |
| <b>React Species:</b>         | Human,Mouse,Rat,Chicken,Dog,Pig,Cow,Sheep,  |
| <b>Applications:</b>          | WB=1:500-2000ELISA=1:500-1000IHC-P=1:400-800IHC-F=1:400-800ICC=1:100-500IF=1:100-500 (Paraffin sections need antigen repair)<br>not yet tested in other applications.<br>optimal dilutions/concentrations should be determined by the end user.   |
| <b>Molecular weight:</b>      | 12kDa   |
| <b>Cellular localization:</b> | cytoplasmic   |
| <b>Form:</b>                  | Lyophilized or Liquid   |
| <b>Concentration:</b>         | 1mg/ml  |
| <b>immunogen:</b>             | KLH conjugated synthetic peptide derived from human FKBP-1A:2-80/108  |
| <b>Lsotype:</b>               | IgG   |
| <b>Purification:</b>          | affinity purified by Protein A  |
| <b>Storage Buffer:</b>        | 0.01M TBS(pH7.4) with 1% BSA, 0.03% Proclin300 and 50% Glycerol.  |
| <b>Storage:</b>               | Store at -20 °C for one year. Avoid repeated freeze/thaw cycles. The lyophilized antibody is stable at room temperature for at least one month and for greater than a year when kept at -20°C. When reconstituted in sterile pH 7.4 0.01M PBS or diluent of antibody the antibody is stable for at least two weeks at 2-4 °C.   |
| <b>PubMed:</b>                | <a href="#">PubMed</a>  |
| <b>Product Detail:</b>        | The protein encoded by this gene is a member of the immunophilin protein family,  |

which play a role in immunoregulation and basic cellular processes involving protein folding and trafficking. The protein is a cis-trans prolyl isomerase that binds the immunosuppressants FK506 and rapamycin. It interacts with several intracellular signal transduction proteins including type I TGF-beta receptor. It also interacts with multiple intracellular calcium release channels, and coordinates multi-protein complex formation of the tetrameric skeletal muscle ryanodine receptor. In mouse, deletion of this homologous gene causes congenital heart disorder known as noncompaction of left ventricular myocardium. Multiple alternatively spliced variants, encoding the same protein, have been identified. The human genome contains five pseudogenes related to this gene, at least one of which is transcribed. [provided by RefSeq, Sep 2008]

**Function:**

May play a role in modulation of ryanodine receptor isoform-1 (RZR-1), a component of the calcium release channel of skeletal muscle sarcoplasmic reticulum. There are four molecules of FKBP12 per skeletal muscle RZR. PPIases accelerate the folding of proteins. It catalyzes the cis-trans isomerization of proline imidic peptide bonds in oligopeptides.

**Subcellular Location:**

Cytoplasm.

**Similarity:**

Belongs to the FKBP-type PPIase family. FKBP1 subfamily. Contains 1 PPIase FKBP-type domain.

**SWISS:**

P62942

**Gene ID:**

2280

**Database links:**

[Entrez Gene: 2280](#) Human

[Entrez Gene: 14225](#) Mouse

[Entrez Gene: 25639](#) Rat

[Oimim: 186945](#) Human

[SwissProt: P62942](#) Human

[SwissProt: P26883](#) Mouse

[SwissProt: Q62658](#) Rat

[Unigene: 471933](#) Human

[Unigene: 700839](#) Human

[Unigene: 278458](#) Mouse

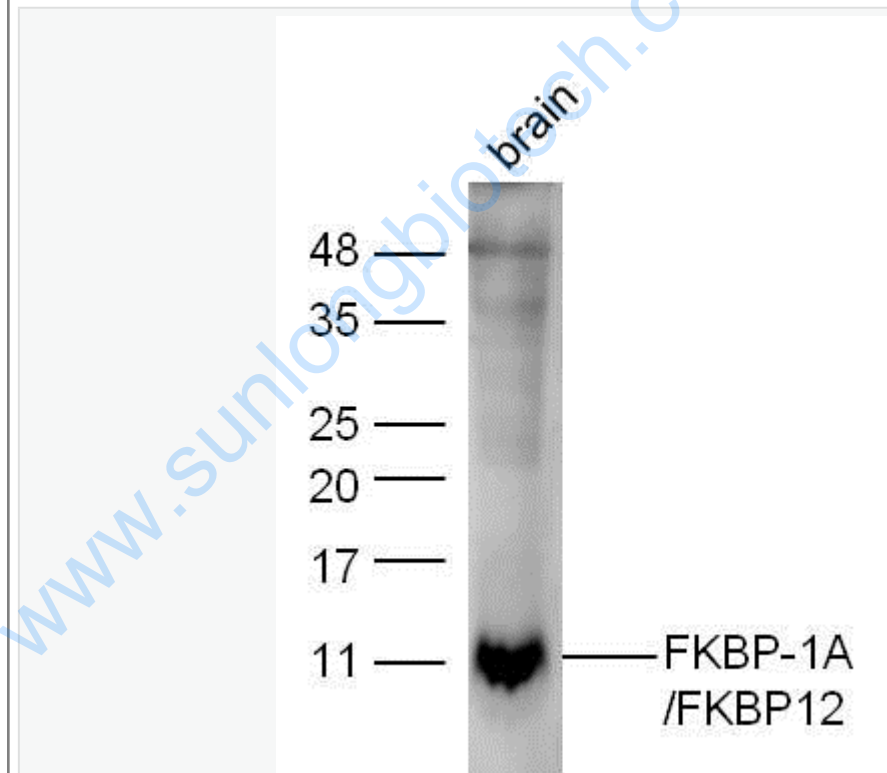
[Unigene: 381214](#) Mouse

[Unigene: 80611](#) Rat

**Important Note:**

This product as supplied is intended for research use only, not for use in human, therapeutic or diagnostic applications.

**Picture:**



Sample:

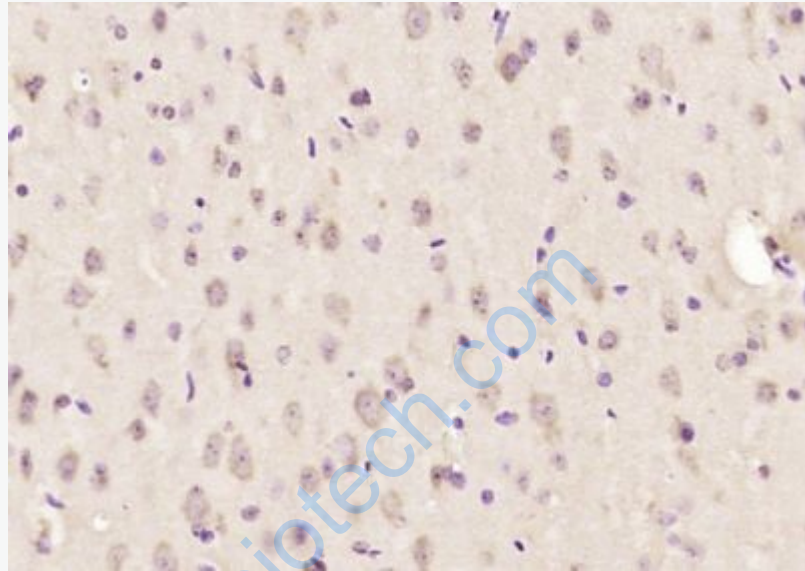
brain (Mouse) Lysate at 40 ug

Primary: Anti-FKBP-1A/FKBP12 (SL7450R) at 1/300 dilution

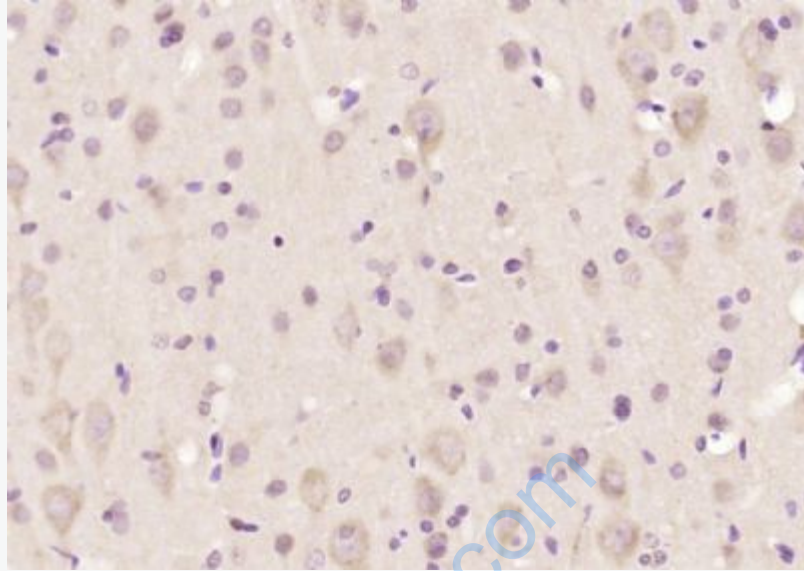
Secondary: IRDye800CW Goat Anti-Rabbit IgG at 1/20000 dilution

Predicted band size: 12 kD

Observed band size: 12 kD



Paraformaldehyde-fixed, paraffin embedded (mouse brain); Antigen retrieval by boiling in sodium citrate buffer (pH6.0) for 15min; Block endogenous peroxidase by 3% hydrogen peroxide for 20 minutes; Blocking buffer (normal goat serum) at 37°C for 30min; Antibody incubation with (FKBP-1A,FKBP12) Polyclonal Antibody, Unconjugated (SL7450R) at 1:200 overnight at 4°C, followed by operating according to SP Kit(Rabbit) (sp-0023) instructions and DAB staining.



Paraformaldehyde-fixed, paraffin embedded (rat brain); Antigen retrieval by boiling in sodium citrate buffer (pH6.0) for 15min; Block endogenous peroxidase by 3% hydrogen peroxide for 20 minutes; Blocking buffer (normal goat serum) at 37°C for 30min; Antibody incubation with (FKBP-1A,FKBP12) Polyclonal Antibody, Unconjugated (SL7450R) at 1:200 overnight at 4°C, followed by operating according to SP Kit(Rabbit) (sp-0023) instructions and DAB staining.