



Rabbit Anti-Creatine Kinase MM antibody

SL7530R

Product Name:	Creatine Kinase MM
Chinese Name:	肌酸激酶M型抗体
Alias:	CKM; CKMM; CK-MM; Creatine kinase M; Creatine kinase M chain; Creatine kinase M type; Creatine kinase M-type; Creatine kinase muscle; KCRM_HUMAN; M-CK; MCK; MS785; Muscle creatine kinase.
Organism Species:	Rabbit
Clonality:	Polyclonal
React Species:	Human,Mouse,Rat,Dog,Pig,Cow,Horse,Rabbit,Zebrafish
Applications:	WB=1:500-2000ELISA=1:500-1000IHC-P=1:400-800IHC-F=1:400-800ICC=1:100-500IF=1:100-500 (Paraffin sections need antigen repair) not yet tested in other applications. optimal dilutions/concentrations should be determined by the end user.
Molecular weight:	43kDa
Cellular localization:	cytoplasmic
Form:	Lyophilized or Liquid
Concentration:	1mg/ml
immunogen:	KLH conjugated synthetic peptide derived from human Creatine Kinase MM:221-330/381
Lsotype:	IgG
Purification:	affinity purified by Protein A
Storage Buffer:	0.01M TBS(pH7.4) with 1% BSA, 0.03% Proclin300 and 50% Glycerol.
Storage:	Store at -20 °C for one year. Avoid repeated freeze/thaw cycles. The lyophilized antibody is stable at room temperature for at least one month and for greater than a year when kept at -20°C. When reconstituted in sterile pH 7.4 0.01M PBS or diluent of antibody the antibody is stable for at least two weeks at 2-4 °C.
PubMed:	PubMed
Product Detail:	The protein encoded by this gene is a cytoplasmic enzyme involved in energy homeostasis and is an important serum marker for myocardial infarction. The encoded protein reversibly catalyzes the transfer of phosphate between ATP and various phosphogens such as creatine phosphate. It acts as a homodimer in striated muscle as

well as in other tissues, and as a heterodimer with a similar brain isozyme in heart. The encoded protein is a member of the ATP:guanido phosphotransferase protein family. [provided by RefSeq, Jul 2008].

Function:

Reversibly catalyzes the transfer of phosphate between ATP and various phosphogens (e.g. creatine phosphate). Creatine kinase isoenzymes play a central role in energy transduction in tissues with large, fluctuating energy demands, such as skeletal muscle, heart, brain and spermatozoa.

Subunit:

Dimer of identical or non-identical chains. With MM being the major form in skeletal muscle and myocardium, MB existing in myocardium, and BB existing in many tissues, especially brain.

Subcellular Location:

Cytoplasm.

Similarity:

Belongs to the ATP:guanido phosphotransferase family.
Contains 1 phosphagen kinase C-terminal domain.
Contains 1 phosphagen kinase N-terminal domain.

SWISS:

P06732

Gene ID:

1158

Database links:

[Entrez Gene: 1158](#)Human

[Entrez Gene: 12715](#)Mouse

[Entrez Gene: 24265](#)Rat

[Omim: 123310](#)Human

[SwissProt: P06732](#)Human

[SwissProt: P07310](#)Mouse

[SwissProt: P00564](#)Rat

[Unigene: 334347](#)Human

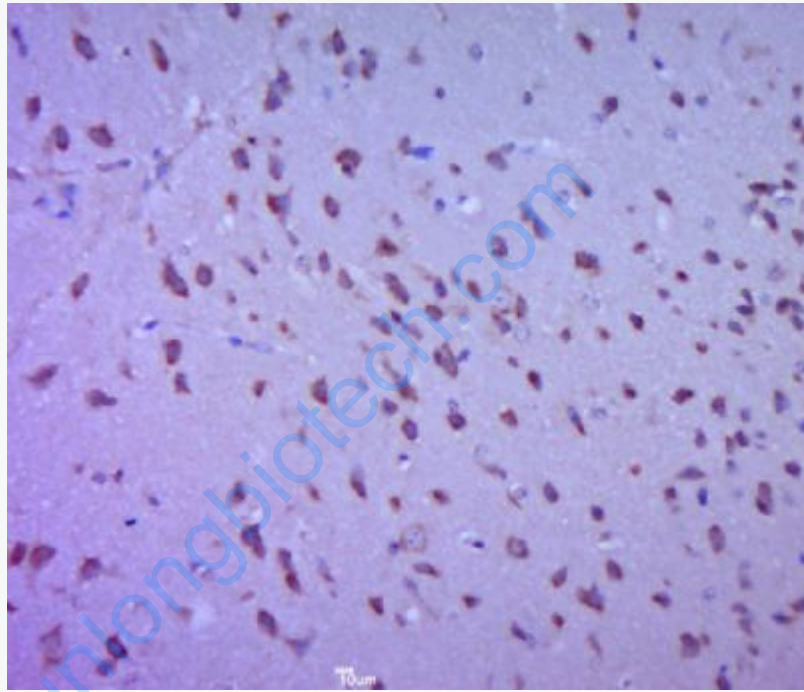
[Unigene: 2375](#)Mouse

[Unigene: 10756Rat](#)

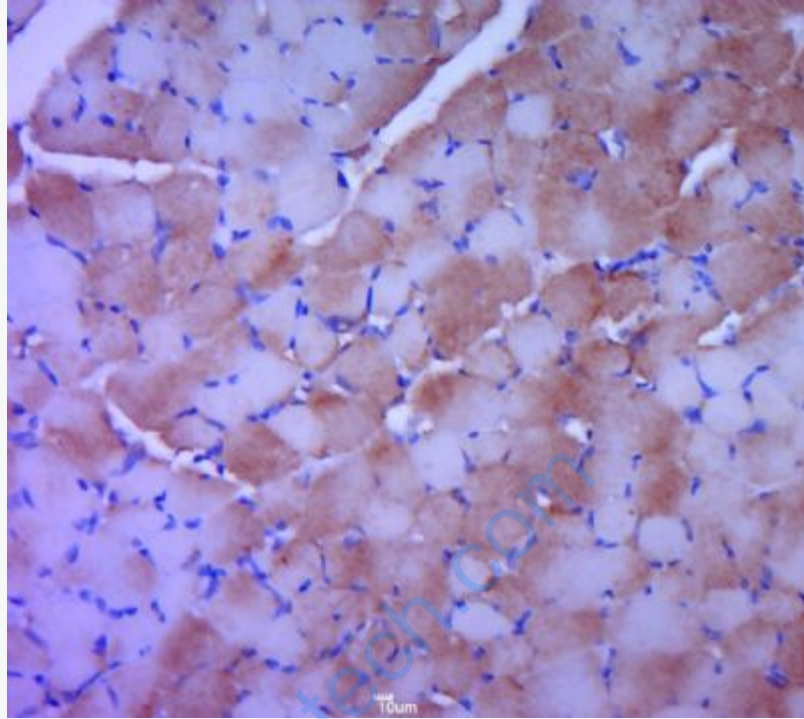
Important Note:

This product as supplied is intended for research use only, not for use in human, therapeutic or diagnostic applications.

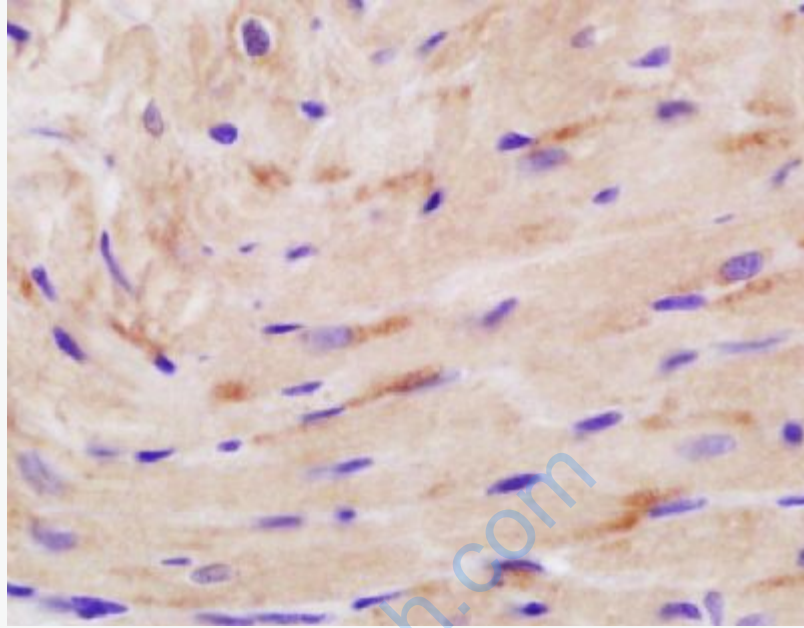
Picture:



Paraformaldehyde-fixed, paraffin embedded (mouse brain tissue); Antigen retrieval by boiling in sodium citrate buffer (pH6.0) for 15min; Block endogenous peroxidase by 3% hydrogen peroxide for 20 minutes; Blocking buffer (normal goat serum) at 37°C for 30min; Antibody incubation with (Creatine Kinase MM) Polyclonal Antibody, Unconjugated (SL7530R) at 1:400 overnight at 4°C, followed by a conjugated secondary (sp-0023) for 20 minutes and DAB staining.



Paraformaldehyde-fixed, paraffin embedded (rat skeletal muscle); Antigen retrieval by boiling in sodium citrate buffer (pH6.0) for 15min; Block endogenous peroxidase by 3% hydrogen peroxide for 20 minutes; Blocking buffer (normal goat serum) at 37°C for 30min; Antibody incubation with (Creatine Kinase MM) Polyclonal Antibody, Unconjugated (SL7530R) at 1:400 overnight at 4°C, followed by a conjugated secondary (sp-0023) for 20 minutes and DAB staining.



Tissue/cell: rat heart tissue; 4% Paraformaldehyde-fixed and paraffin-embedded;
Antigen retrieval: citrate buffer (0.01M, pH 6.0), Boiling bathing for 15min; Block
endogenous peroxidase by 3% Hydrogen peroxide for 30min; Blocking buffer
(normal goat serum,C-0005) at 37°C for 20 min;
Incubation: Anti-Creatine Kinase MM/KCRM Polyclonal Antibody,
Unconjugated(SL7530R) 1:200, overnight at 4°C, followed by conjugation to the
secondary antibody(SP-0023) and DAB(C-0010) staining