




## Rabbit Anti-SIRT4 antibody

SL7537R

<b>Product Name:</b>	SIRT4
<b>Chinese Name:</b>	沉默调节相关蛋白4抗体
<b>Alias:</b>	NAD dependent deacetylase sirtuin 4; NAD-dependent ADP-ribosyltransferase sirtuin-4; Silent mating type information regulation 2 homolog; Sir 2 like 4; SIR 2 like protein 4; Sir2 like 4; SIR2 like protein 4; SIR2-like protein 4; SIR2L 4; SIR2L4; SIRT 4; Sirt4; SIRT4_HUMAN; Sirtuin (silent mating type information regulation 2 homolog) 4; Sirtuin (silent mating type information regulation 2 homolog) 4 (S. cerevisiae); Sirtuin 4; Sirtuin type 4; Sirtuin4.
<b>文献引用</b> 	<b>Specific References(2)</b>  SL7537R has been referenced in 2 publications. [IF=1.11]Takumida, Masaya, Hiroshi Takumida, and Matti Anniko. "Localization of sirtuins in the mouse inner ear." Acta Oto-Laryngologica 0 (2014): 1-8.IHC-F;Mouse. <a href="#">PubMed:24460154</a> [IF=1.10]Takumida, Masaya, et al. "Localization of sirtuins (SIRT1-7) in the aged mouse inner ear." Acta oto-laryngologica (2015): 1-12.other; <a href="#">PubMed:26472659</a>
<b>Organism Species:</b>	Rabbit
<b>Clonality:</b>	Polyclonal
<b>React Species:</b>	Human,Mouse,Rat,Pig,Cow,Horse,Rabbit,Zebrafish,Sheep,Fruit Fly,
<b>Applications:</b>	WB=1:500-2000ELISA=1:500-1000 not yet tested in other applications. optimal dilutions/concentrations should be determined by the end user.
<b>Molecular weight:</b>	32kDa
<b>Cellular localization:</b>	cytoplasmic
<b>Form:</b>	Lyophilized or Liquid
<b>Concentration:</b>	1mg/ml
<b>immunogen:</b>	KLH conjugated synthetic peptide derived from human SIRT4/SIR 2 like protein 4:51-

	150/314
<b>Lsotype:</b>	IgG
<b>Purification:</b>	affinity purified by Protein A
<b>Storage Buffer:</b>	0.01M TBS(pH7.4) with 1% BSA, 0.03% Proclin300 and 50% Glycerol.
<b>Storage:</b>	Store at -20 °C for one year. Avoid repeated freeze/thaw cycles. The lyophilized antibody is stable at room temperature for at least one month and for greater than a year when kept at -20°C. When reconstituted in sterile pH 7.4 0.01M PBS or diluent of antibody the antibody is stable for at least two weeks at 2-4 °C.
<b>PubMed:</b>	<a href="#">PubMed</a>
<b>Product Detail:</b>	<p>NAD-dependent protein ADP-ribosyl transferase. Catalyzes the transfer of ADP-ribosyl groups onto target proteins, including mitochondrial GLUD1. Inhibits GLUD1 enzyme activity. Down-regulates insulin secretion. Has no detectable protein deacetylase activity.</p> <p><b>Function:</b> NAD-dependent protein ADP-ribosyl transferase. Catalyzes the transfer of ADP-ribosyl groups onto target proteins, including mitochondrial GLUD1. Inhibits GLUD1 enzyme activity. Down-regulates insulin secretion. Has no detectable protein deacetylase activity.</p> <p><b>Subunit:</b> Interacts with GLUD1, IDE and SLC25A5.</p> <p><b>Subcellular Location:</b> Mitochondrion matrix.</p> <p><b>Tissue Specificity:</b> Detected in vascular smooth muscle and striated muscle. Detected in insulin-producing beta-cells in pancreas islets of Langerhans (at protein level). Widely expressed. Weakly expressed in leukocytes and fetal thymus.</p> <p><b>Similarity:</b> Belongs to the sirtuin family. Class II subfamily. Contains 1 deacetylase sirtuin-type domain.</p> <p><b>SWISS:</b> Q9Y6E7</p> <p><b>Gene ID:</b> 23409</p> <p><b>Database links:</b> <a href="#">Entrez Gene: 519328</a>Cow <a href="#">Entrez Gene: 23409</a>Human</p>

[Entrez Gene: 75387](#)Mouse

[Entrez Gene: 100125349](#)Pig

[Entrez Gene: 304539](#)Rat

[Omin: 604482](#)Human

[SwissProt: Q1JQC6](#)Cow

[SwissProt: Q9Y6E7](#)Human

[SwissProt: Q8R216](#)Mouse

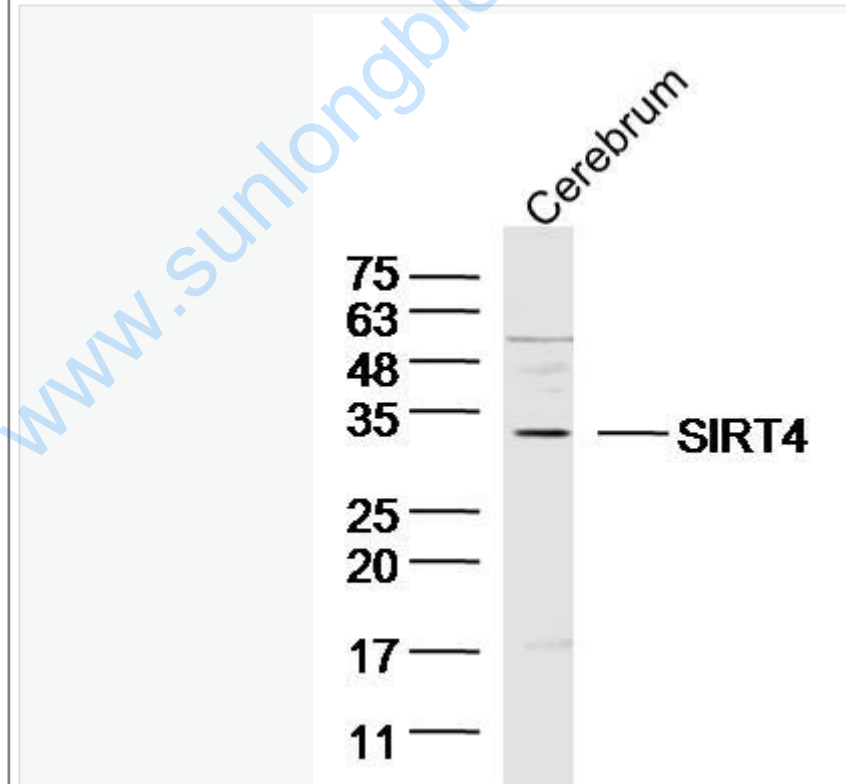
[Unigene: 50861](#)Human

[Unigene: 332616](#)Mouse

**Important Note:**

This product as supplied is intended for research use only, not for use in human, therapeutic or diagnostic applications.

Picture:



Sample: Cerebrum (Mouse) Lysate at 40 ug

Primary: Anti-SIRT4 (SL7537R) at 1/300 dilution

Secondary: IRDye800CW Goat Anti-Rabbit IgG at 1/20000 dilution

Predicted band size: 32 kD

Observed band size: 32 kD

[www.sunlongbiotech.com](http://www.sunlongbiotech.com)