



Rabbit Anti-TRIB3 antibody

SL7538R

Product Name:	TRIB3
Chinese Name:	神经细胞死亡诱导蛋白激酶抗体
Alias:	C20orf97; Neuronal cell death inducible putative kinase; Neuronal cell death-inducible putative kinase; NIPK; p65 interacting inhibitor of NF-kappaB; p65-interacting inhibitor of NF-kappa-B; SINK; SKIP 3; SKIP3; TRB 3; TRB-3; TRB3; TRIB 3; Trib3; TRIB3 HUMAN; Tribbles homolog 3; Tribbles3.
Organism Species:	Rabbit
Clonality:	Polyclonal
React Species:	Human,Mouse,Rat,Chicken,Dog,Pig,Cow,Horse,Rabbit,
Applications:	ELISA=1:500-1000IHC-P=1:400-800IHC-F=1:400-800Flow-Cyt=1ug/testIF=1:100-500 (Paraffin sections need antigen repair) not yet tested in other applications. optimal dilutions/concentrations should be determined by the end user.
Molecular weight:	40kDa
Cellular localization:	The nucleus
Form:	Lyophilized or Liquid
Concentration:	1mg/ml
immunogen:	KLH conjugated synthetic peptide derived from human TRIB3/p65 interacting inhibitor of NF-kappaB:201-300/358
Lsotype:	IgG
Purification:	affinity purified by Protein A
Storage Buffer:	0.01M TBS(pH7.4) with 1% BSA, 0.03% Proclin300 and 50% Glycerol.
Storage:	Store at -20 °C for one year. Avoid repeated freeze/thaw cycles. The lyophilized antibody is stable at room temperature for at least one month and for greater than a year when kept at -20°C. When reconstituted in sterile pH 7.4 0.01M PBS or diluent of antibody the antibody is stable for at least two weeks at 2-4 °C.
PubMed:	PubMed
Product Detail:	The protein encoded by this gene is a putative protein kinase that is induced by the transcription factor NF-kappaB. The encoded protein is a negative regulator of NF-kappaB and can also sensitize cells to TNF- and TRAIL-induced apoptosis. In addition,

this protein can negatively regulate the cell survival serine-threonine kinase AKT1. Differential promoter usage and alternate splicing result in multiple transcript variants. [provided by RefSeq, Jul 2014]

Function:

Disrupts insulin signaling by binding directly to Akt kinases and blocking their activation. May bind directly to and mask the 'Thr-308' phosphorylation site in AKT1. Binds to ATF4 and inhibits its transcriptional activation activity. Interacts with the NF-kappa-B transactivator p65 RELA and inhibits its phosphorylation and thus its transcriptional activation activity. Interacts with MAPK kinases and regulates activation of MAP kinases. May play a role in programmed neuronal cell death but does not appear to affect non-neuronal cells. Does not display kinase activity.

Subunit:

Interacts with AKT1, AKT2, ATF4, MAP2K1 and MAP2K7.

Subcellular Location:

Nucleus.

Tissue Specificity:

Highest expression in liver, pancreas, peripheral blood leukocytes and bone marrow. Also highly expressed in a number of primary lung, colon and breast tumors. Expressed in spleen, thymus, and prostate and is undetectable in other examined tissues, including testis, ovary, small intestine, colon, leukocyte, heart, brain, placenta, lung, skeletal muscle, and kidney.

Similarity:

Belongs to the protein kinase superfamily. CAMK Ser/Thr protein kinase family. Tribbles subfamily. Contains 1 protein kinase domain.

SWISS:

Q96RU7

Gene ID:

57761

Database links:

[Entrez Gene: 57761](#)Human

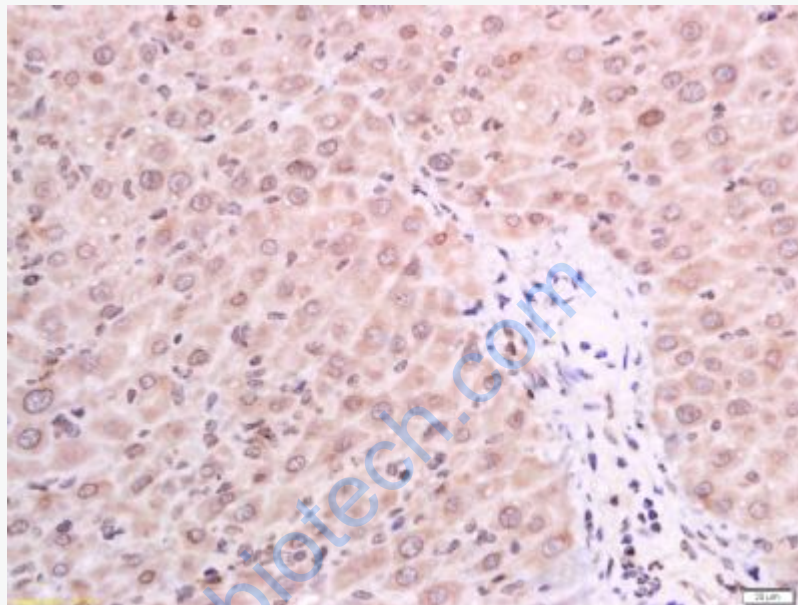
[Oimim: 607898](#)Human

[SwissProt: Q96RU7](#)Human

[Unigene: 516826](#)Human

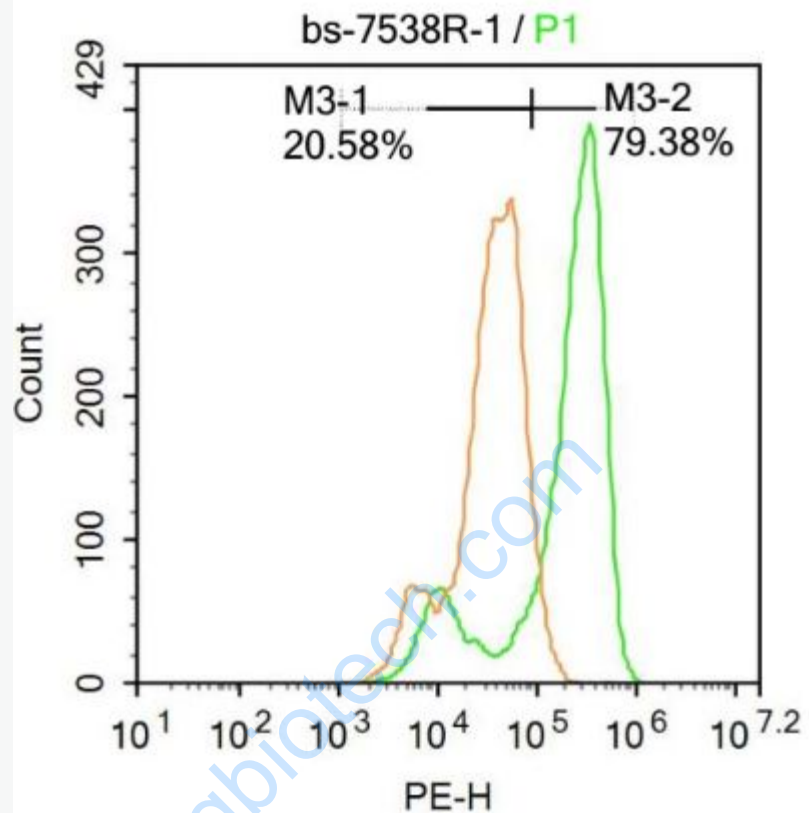
Important Note:

This product as supplied is intended for research use only, not for use in human, therapeutic or diagnostic applications.



Picture:

Tissue/cell: rat liver tissue; 4% Paraformaldehyde-fixed and paraffin-embedded;
Antigen retrieval: citrate buffer (0.01M, pH 6.0), Boiling bathing for 15min; Block endogenous peroxidase by 3% Hydrogen peroxide for 30min; Blocking buffer (normal goat serum,C-0005) at 37°C for 20 min;
Incubation: Anti-TRIB3 Polyclonal Antibody, Unconjugated(SL7538R) 1:400, overnight at 4°C, followed by conjugation to the secondary antibody(SP-0023) and DAB(C-0010) staining



Blank control:A431.

Primary Antibody (green line): Rabbit Anti-TRIB3 antibody (SL7538R)

Dilution: $1\mu\text{g}/10^6$ cells;

Isotype Control Antibody (orange line): Rabbit IgG .

Secondary Antibody : Goat anti-rabbit IgG-AF647

Dilution: $1\mu\text{g}/\text{test}$.

Protocol

The cells were fixed with 4% PFA (10min at room temperature)and then permeabilized with 90% ice-cold methanol for 20 min at -20°C . The cells were then incubated in 5%BSA to block non-specific protein-protein interactions for 30 min at room temperature .Cells stained with Primary Antibody for 30 min at room

temperature. The secondary antibody used for 40 min at room temperature.

Acquisition of 20,000 events was performed.

www.sunlongbiotech.com