



## Rabbit Anti-AT2A1/SERCA1 ATPase antibody

SL7539R

<b>Product Name:</b>	AT2A1/SERCA1 ATPase
<b>Chinese Name:</b>	肌浆网钙ATP酶1/内质网钙ATP酶1抗体
<b>Alias:</b>	fast twitch skeletal muscle isoform; AT2A1_HUMAN; ATP2A; ATP2A1; ATPase Ca <sup>++</sup> transporting cardiac muscle fast twitch 1; ATPase Ca <sup>++</sup> transporting fast twitch 1; ATPase, Ca(2+)-transporting fast twitch 1; Calcium pump 1; Calcium transporting ATPase sarcoplasmic reticulum type fast twitch skeletal muscle isoform; Calcium-transporting ATPase sarcoplasmic reticulum type; EC 3.6.3.8; Endoplasmic reticulum class 1/2 Ca(2+) ATPase; Fast skeletal muscle SR calcium ATPase; OTTHUMP00000162561; OTTHUMP00000162562; Sarcoendoplasmic reticulum calcium ATPase; Sarcoplasmic reticulum Ca(2+)-ATPase 1; Ca-ATPase; Sarcoplasmic/endoplasmic reticulum calcium ATPase 1; SERCA 1; SERCA1; SERCA1 truncated isoform, included; SR Ca(2+) ATPase 1; SR Ca(2+)-ATPase 1.
<b>Organism Species:</b>	Rabbit
<b>Clonality:</b>	Polyclonal
<b>React Species:</b>	Human,Mouse,Rat,Dog,Cow,Horse,Rabbit,Sheep,
<b>Applications:</b>	WB=1:500-2000ELISA=1:500-1000IHC-P=1:400-800IHC-F=1:400-800IF=1:100-500 (Paraffin sections need antigen repair) not yet tested in other applications. optimal dilutions/concentrations should be determined by the end user.
<b>Molecular weight:</b>	110kDa
<b>Cellular localization:</b>	cytoplasmicThe cell membrane
<b>Form:</b>	Lyophilized or Liquid
<b>Concentration:</b>	1mg/ml
<b>immunogen:</b>	KLH conjugated synthetic peptide derived from human SERCA1 ATPase:101-200/1001
<b>Lsotype:</b>	IgG
<b>Purification:</b>	affinity purified by Protein A
<b>Storage Buffer:</b>	0.01M TBS(pH7.4) with 1% BSA, 0.03% Proclin300 and 50% Glycerol.
<b>Storage:</b>	Store at -20 °C for one year. Avoid repeated freeze/thaw cycles. The lyophilized antibody is stable at room temperature for at least one month and for greater than a year when kept at -20°C. When reconstituted in sterile pH 7.4 0.01M PBS or diluent of

	antibody the antibody is stable for at least two weeks at 2-4 °C.
<b>PubMed:</b>	<a href="#">PubMed</a>
<b>Product Detail:</b>	<p>This magnesium-dependent enzyme catalyzes the hydrolysis of ATP coupled with the translocation of calcium from the cytosol to the sarcoplasmic reticulum lumen. Contributes to calcium sequestration involved in muscular excitation/contraction.</p> <p><b>Function:</b> This magnesium-dependent enzyme catalyzes the hydrolysis of ATP coupled with the translocation of calcium from the cytosol to the sarcoplasmic reticulum lumen. Contributes to calcium sequestration involved in muscular excitation/contraction.</p> <p><b>Subunit:</b> Associated with sarcolipin (SLN) and phospholamban (PLN) (By similarity).</p> <p><b>Subcellular Location:</b> Endoplasmic reticulum membrane; Multi-pass membrane protein. Sarcoplasmic reticulum membrane; Multi-pass membrane protein.</p> <p><b>Tissue Specificity:</b> Skeletal muscle, fast twitch muscle (type II) fibers.</p> <p><b>DISEASE:</b> Defects in ATP2A1 are the cause of Brody myopathy (BRM) [MIM:601003]. An autosomal recessive myopathy characterized by increasing impairment of relaxation of fast twist skeletal muscle during exercise.</p> <p><b>Similarity:</b> Belongs to the cation transport ATPase (P-type) (TC 3.A.3) family. Type IIA subfamily.</p> <p><b>SWISS:</b> O14983</p> <p><b>Gene ID:</b> 487</p> <p><b>Database links:</b></p> <p><a href="#">Entrez Gene: 518117</a> Cow</p> <p><a href="#">Entrez Gene: 487</a> Human</p> <p><a href="#">Entrez Gene: 11937</a> Mouse</p> <p><a href="#">Entrez Gene: 100037716</a> Rabbit</p> <p><a href="#">Entrez Gene: 116601</a> Rat</p>

[Omin: 108730](#) Human

[SwissProt: Q0VCY0](#) Cow

[SwissProt: O14983](#) Human

[SwissProt: Q8R429](#) Mouse

[SwissProt: P04191](#) Rabbit

[SwissProt: Q64578](#) Rat

[Unigene: 657344](#) Human

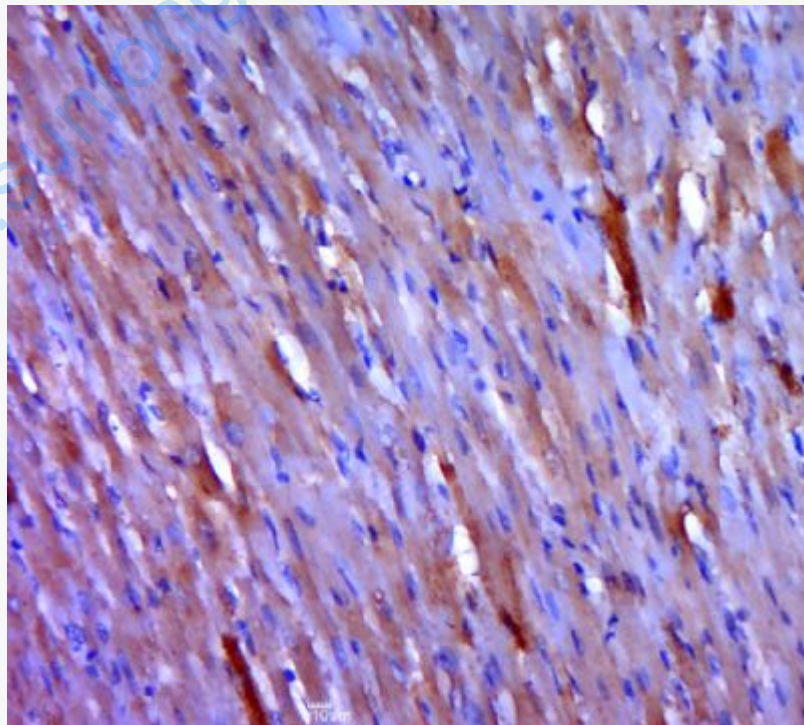
[Unigene: 35134](#) Mouse

[Unigene: 217139](#) Rat

**Important Note:**

This product as supplied is intended for research use only, not for use in human, therapeutic or diagnostic applications.

**Picture:**



Paraformaldehyde-fixed, paraffin embedded (rat heart tissue); Antigen retrieval by

boiling in sodium citrate buffer (pH6.0) for 15min; Block endogenous peroxidase by 3% hydrogen peroxide for 20 minutes; Blocking buffer (normal goat serum) at 37°C for 30min; Antibody incubation with (AT2A1) Polyclonal Antibody, Unconjugated (SL7539R) at 1:400 overnight at 4°C, followed by a conjugated secondary (sp-0023) for 20 minutes and DAB staining.

[www.sunlongbiotech.com](http://www.sunlongbiotech.com)