



Rabbit Anti-Serine carboxypeptidase 1 antibody

SL7542R

Product Name:	Serine carboxypeptidase 1
Chinese Name:	丝氨酸羧肽酶1抗体
Alias:	HSCP 1; HSCP1; likely homolog of rat and mouse retinoid-inducible serine carboxypeptidase; Retinoid inducible serine carboxypeptidase; Retinoid-inducible serine carboxypeptidase precursor; SCP 1; SCP1; SCPEP 1; SCPEP1; Serine carboxypeptidase 1; serine carboxypeptidase 1 precursor protein; RISC_HUMAN.
Organism Species:	Rabbit
Clonality:	Polyclonal
React Species:	Human,Mouse,Rat,
Applications:	ELISA=1:500-1000IHC-P=1:400-800IHC-F=1:400-800IF=1:100-500 (Paraffin sections need antigen repair) not yet tested in other applications. optimal dilutions/concentrations should be determined by the end user.
Molecular weight:	48kDa
Cellular localization:	cytoplasmicSecretory protein
Form:	Lyophilized or Liquid
Concentration:	1mg/ml
immunogen:	KLH conjugated synthetic peptide derived from human RISC/Serine carboxypeptidase 1:121-320/452
Lsotype:	IgG
Purification:	affinity purified by Protein A
Storage Buffer:	0.01M TBS(pH7.4) with 1% BSA, 0.03% Proclin300 and 50% Glycerol.
Storage:	Store at -20 °C for one year. Avoid repeated freeze/thaw cycles. The lyophilized antibody is stable at room temperature for at least one month and for greater than a year when kept at -20°C. When reconstituted in sterile pH 7.4 0.01M PBS or diluent of antibody the antibody is stable for at least two weeks at 2-4 °C.
PubMed:	PubMed
Product Detail:	Vascular smooth muscle activation is a salient feature of several pathological conditions including atherosclerosis, hypertension, vein graft failure, restenosis, and transplant arteriopathy. Several new genes whose proteins could lead to such biological effects

have been identified. One such protein is RISC. Tissue expression pattern of Retinoid-inducible serine carboxypeptidase (RISC) in human revealed that it was highly expressed in kidney and heart.

Function:

May be involved in vascular wall and kidney homeostasis (By similarity).

Subcellular Location:

Secreted (Potential).

Similarity:

Belongs to the peptidase S10 family.

SWISS:

Q9HB40

Gene ID:

59342

Database links:

[Entrez Gene: 59342](#)Human

[Entrez Gene: 74617](#)Mouse

[Entrez Gene: 114861](#)Rat

[SwissProt: Q9HB40](#)Human

[SwissProt: Q920A5](#)Mouse

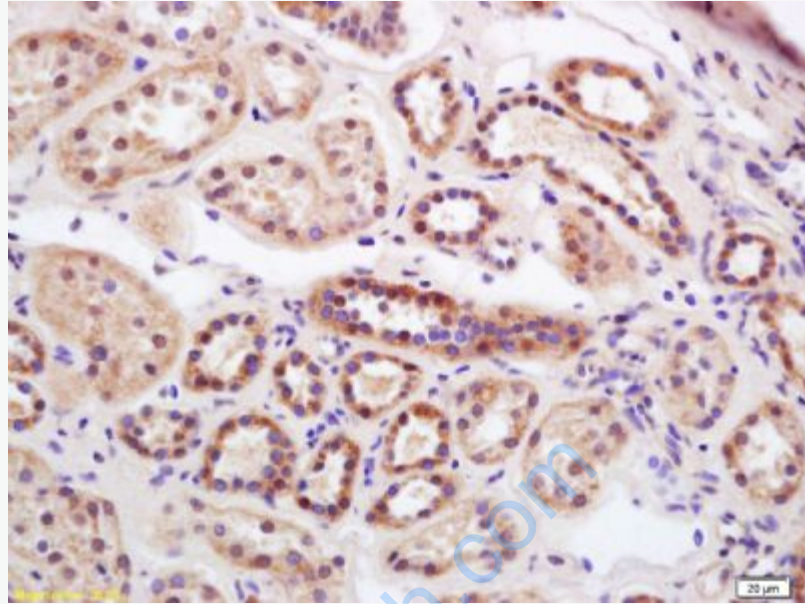
[SwissProt: Q920A6](#)Rat

[Unigene: 514950](#)Human

[Unigene: 34126](#)Mouse

Important Note:

This product as supplied is intended for research use only, not for use in human, therapeutic or diagnostic applications.



Picture:

Tissue/cell: Human kidney; 4% Paraformaldehyde-fixed and paraffin-embedded;
Antigen retrieval: citrate buffer (0.01M, pH 6.0), Boiling bathing for 15min; Block endogenous peroxidase by 3% Hydrogen peroxide for 30min; Blocking buffer (normal goat serum,C-0005) at 37°C for 20 min;
Incubation: Anti-RISC/Serine carboxypeptidase 1 Polyclonal Antibody, Unconjugated(SL7542R) 1:200, overnight at 4°C, followed by conjugation to the secondary antibody(SP-0023) and DAB(C-0010) staining