



## Rabbit Anti-Scavenger Receptor BII antibody

SL7545R

<b>Product Name:</b>	Scavenger Receptor BII
<b>Chinese Name:</b>	清道夫受体B2抗体
<b>Alias:</b>	85 kDa lysosomal membrane sialoglycoprotein; 85 kDa lysosomal sialoglycoprotein scavenger receptor class B member 2; AMRF; CD36; CD36 antigen (collagen type I receptor, thrombospondin receptor)-like 2 (lysosomal integral membrane protein II); CD36 antigen; CD36 antigen-like 2; CD36L2; EPM4; HLGP85; LGP85; LIMP 2; LIMP II; LIMP2; LIMPII; Lysosomal integral membrane protein II; Lysosome membrane protein 2; Lysosome membrane protein II; OTTHUMP00000160590; OTTHUMP00000219176; Scarb2; Scavenger receptor class B member 2; Scavenger receptor class B, member 2; SCRB2_HUMAN; SR BII; SRBII.
<b>Organism Species:</b>	Rabbit
<b>Clonality:</b>	Polyclonal
<b>React Species:</b>	Human,Mouse,Rat,Dog,Pig,Cow,Horse,Rabbit,
<b>Applications:</b>	WB=1:500-2000ELISA=1:500-1000IHC-P=1:400-800IHC-F=1:400-800IF=1:100-500 (Paraffin sections need antigen repair) not yet tested in other applications. optimal dilutions/concentrations should be determined by the end user.
<b>Molecular weight:</b>	52kDa
<b>Cellular localization:</b>	cytoplasmicThe cell membrane
<b>Form:</b>	Lyophilized or Liquid
<b>Concentration:</b>	1mg/ml
<b>immunogen:</b>	KLH conjugated synthetic peptide derived from human Scavenger Receptor BII:181-280/478
<b>Lsotype:</b>	IgG
<b>Purification:</b>	affinity purified by Protein A
<b>Storage Buffer:</b>	0.01M TBS(pH7.4) with 1% BSA, 0.03% Proclin300 and 50% Glycerol.
<b>Storage:</b>	Store at -20 °C for one year. Avoid repeated freeze/thaw cycles. The lyophilized antibody is stable at room temperature for at least one month and for greater than a year when kept at -20°C. When reconstituted in sterile pH 7.4 0.01M PBS or diluent of antibody the antibody is stable for at least two weeks at 2-4 °C.

**PubMed:**[PubMed](#)

High density lipoproteins (HDLs) play a critical role in cholesterol metabolism and their plasma concentrations are inversely correlated with risk for atherosclerosis. SR-BI and SR-BII (previously known as SR-BI.2) are the alternatively spliced products of a single gene. SR-BII and SR-BI are identical except for the encoded c-terminal cytoplasmic domain. Both SR-BI and SR-BII bind HDL and mediates selective uptake of HDL cholesteryl ester, but with SR-BII having an approximately 4-fold lower efficiency than SR-BI. SR-BI and SR-BII are expressed primarily in liver and non-placental steroidgenic tissues. Although the role of these scavenger receptors is not completely clear, SR-BII mRNA results from the alternative splicing of SR-BI precursor transcripts with both isoforms mediating selective transfer of lipid between HDL and cells. Therefore, the relative expression and functional activities of these two isoforms create a potential means of regulating selective lipid transfer between HDL and cells.

**Function:**

Acts as a lysosomal receptor for glucosylceramidase (GBA) targeting.

**Subunit:**

Interacts with GBA (via the coiled-coil domain).

**Subcellular Location:**

Lysosome membrane; Multi-pass membrane protein.

**DISEASE:**

Defects in SCARB2 are the cause of progressive myoclonic epilepsy type 4 with or without renal failure (EPM4) [MIM:254900]. An autosomal recessive progressive myoclonic epilepsy associated with renal failure in some cases. Cognitive function is preserved. Myoclonus is a brief, involuntary twitching of a muscle or a group of muscles. Cognitive function is preserved.

Note=Genetic variants in SCARB2 can act as modifier of the phenotypic expression and severity of Gaucher disease.

**Similarity:**

Belongs to the CD36 family.

**SWISS:**

Q14108

**Gene ID:**

950

**Database links:**

[Entrez Gene: 950](#) Human

[Entrez Gene: 12492](#) Mouse

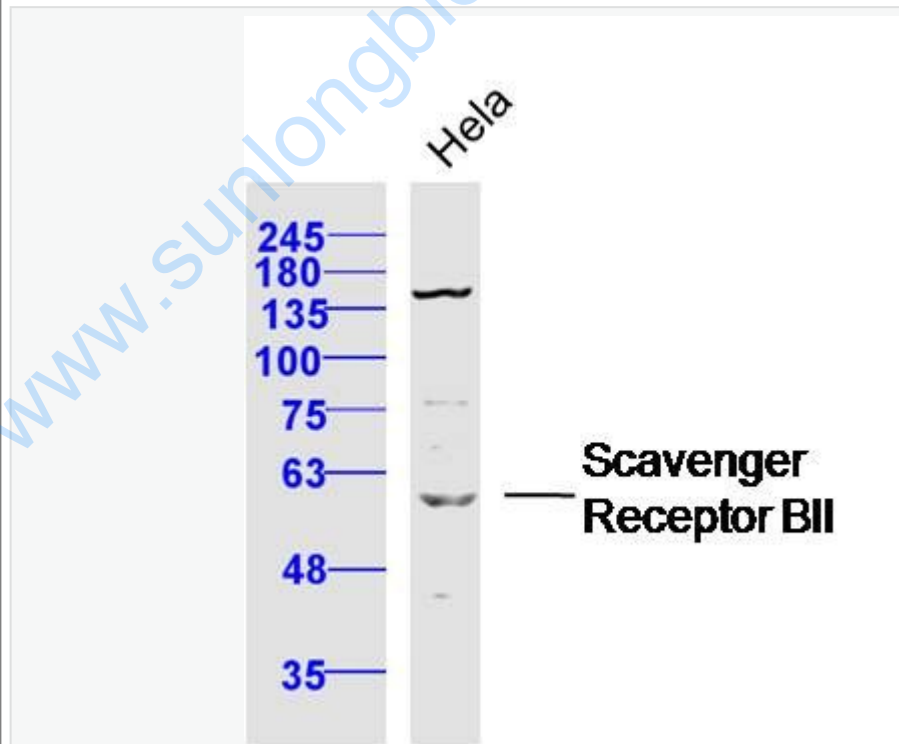
**Product Detail:**

[Entrez Gene: 117106](#) Rat  
[Omim: 602257](#) Human  
[SwissProt: Q14108](#) Human  
[SwissProt: O35114](#) Mouse  
[SwissProt: P27615](#) Rat  
[Unigene: 349656](#) Human  
[Unigene: 297964](#) Mouse  
[Unigene: 3957](#) Rat

**Important Note:**

This product as supplied is intended for research use only, not for use in human, therapeutic or diagnostic applications.

Picture:



Sample: HeLa Cell (Human) Lysate at 40 ug

Primary: Anti-Scavenger Receptor BII (SL7545R) at 1/300 dilution

Secondary: IRDye800CW Goat Anti-Rabbit IgG at 1/20000 dilution

Predicted band size: 52 kD

Observed band size: 52 kD

[www.sunlongbiotech.com](http://www.sunlongbiotech.com)