



Rabbit Anti-CD239 antibody

SL7546R

Product Name:	CD239
Chinese Name:	BCell adhesion moleculeCD239抗体
Alias:	Antigen identified by monoclonal antibody F8; AU antibody Auberger B antigen; B CAM cell surface glycoprotein; B cell adhesion molecule; B-CAM cell surface glycoprotein; Basal cell adhesion molecule; Basal cell adhesion molecule Lu and Au blood groups; Basal cell adhesion molecule Lutheran blood group; Bcam; BCAM_HUMAN; CD239; CD239 antigen; F8/G253 antigen; Glycoprotein 95kDa; LU; Lutheran; Lutheran antigen; Lutheran blood group (Auberger b antigen included); Lutheran blood group Auberger b antigen included; Lutheran blood group glycoprotein; MSK19.
Organism Species:	Rabbit
Clonality:	Polyclonal
React Species:	Human,Mouse,Rat,Dog,Cow,
Applications:	ELISA=1:500-1000Flow-Cyt=1ug/Test not yet tested in other applications. optimal dilutions/concentrations should be determined by the end user.
Molecular weight:	64kDa
Cellular localization:	The cell membrane
Form:	Lyophilized or Liquid
Concentration:	1mg/ml
immunogen:	KLH conjugated synthetic peptide derived from human CD239:201-300/623<Extracellular>
Lsotype:	IgG
Purification:	affinity purified by Protein A
Storage Buffer:	0.01M TBS(pH7.4) with 1% BSA, 0.03% Proclin300 and 50% Glycerol.
Storage:	Store at -20 °C for one year. Avoid repeated freeze/thaw cycles. The lyophilized antibody is stable at room temperature for at least one month and for greater than a year when kept at -20°C. When reconstituted in sterile pH 7.4 0.01M PBS or diluent of antibody the antibody is stable for at least two weeks at 2-4 °C.
PubMed:	PubMed

This gene encodes Lutheran blood group glycoprotein, a member of the immunoglobulin superfamily and a receptor for the extracellular matrix protein, laminin. The protein contains five extracellular immunoglobulin domains, a single transmembrane domain, and a short C-terminal cytoplasmic tail. This protein may play a role in epithelial cell cancer and in vaso-occlusion of red blood cells in sickle cell disease. Polymorphisms in this gene define some of the antigens in the Lutheran system and also the Auberger system. Inactivating variants of this gene result in the recessive Lutheran null phenotype, Lu(a-b-), of the Lutheran blood group. Two transcript variants encoding different isoforms have been found for this gene. [provided by RefSeq, May 2012].

Function:

Laminin alpha-5 receptor. May mediate intracellular signaling.

Subcellular Location:

Membrane; Single-pass type I membrane protein.

Tissue Specificity:

Wide tissue distribution (highest in the pancreas and very low in brain). Closely associated with the basal layer of cells in epithelia and the endothelium of blood vessel walls.

Post-translational modifications:

Epinephrine-stimulated phosphorylation of Ser-621 by PKA enhances adhesion to laminin.

Similarity:

Contains 3 Ig-like C2-type (immunoglobulin-like) domains.

Contains 2 Ig-like V-type (immunoglobulin-like) domains.

SWISS:

P50895

Gene ID:

4059

Database links:

[Entrez Gene: 4059](#)Human

[Entrez Gene: 57278](#)Mouse

[Entrez Gene: 78958](#)Rat

[Oimim: 612773](#)Human

[SwissProt: P50895](#)Human

[SwissProt: Q9R069](#)Mouse

Product Detail:

[SwissProt: Q9ESS6](#)Rat

[Unigene: 625725](#)Human

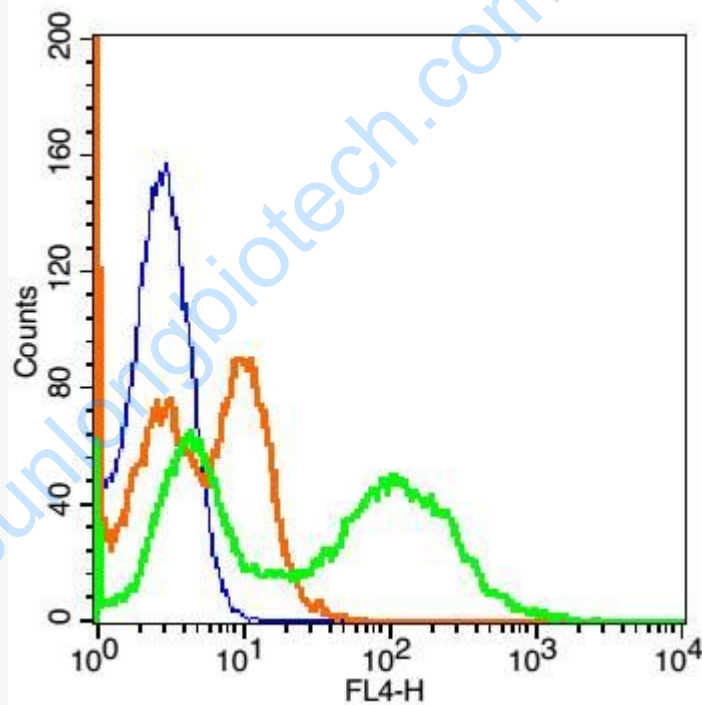
[Unigene: 29236](#)Mouse

[Unigene: 7003](#)Rat

Important Note:

This product as supplied is intended for research use only, not for use in human, therapeutic or diagnostic applications.

Picture:

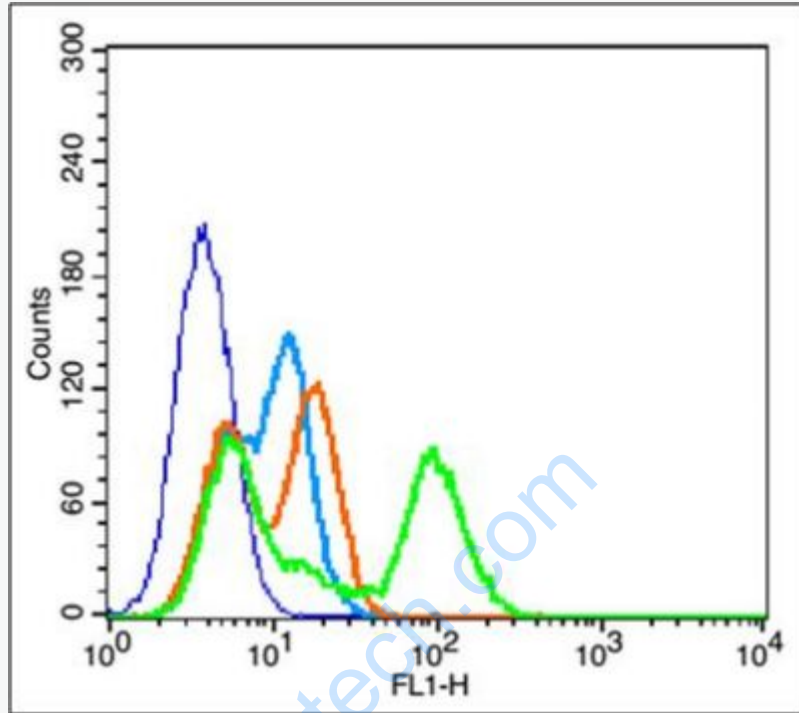


Blank control(blue): A549 (fixed with 2% paraformaldehyde for 10 min at 37°C).

Primary Antibody:Rabbit Anti-CD239/AF647 Conjugated antibody (SL7546R);

Dilution: 1ug in 100 uL 1X PBS containing 0.5% BSA;

Isotype Control Antibody: Rabbit IgG/AF647 (orange) ,used under the same conditions;



Blank control(blue): A549 (fixed with 2% paraformaldehyde for 10 min at 37°C).

Primary Antibody:Rabbit Anti-CD239 antibody (SL7546R); Dilution: 1ug in 100 uL
1X PBS containing 0.5% BSA;

Isotype Control Antibody: Rabbit IgG(orange) ,used under the same conditions;

Secondary Antibody: Goat anti-rabbit IgG-FITC(white blue), Dilution: 1:200 in 1 X
PBS containing 0.5% BSA.