



Rabbit Anti-CPB2 antibody

SL7547R

Product Name:	CPB2
Chinese Name:	胰羧肽酶B2抗体
Alias:	Carboxypeptidase B like protein; Carboxypeptidase U; CarboxypeptidaseB2; Carboxypeptidase B2; CarboxypeptidaseU; CP B2; CPB 2; CPB2; CPU; PCPB; Plasma carboxypeptidase B; Plasma carboxypeptidase B2; Procarboxypeptidase B; Procarboxypeptidase R; Procarboxypeptidase U; TAFI; Thrombin activable fibrinolysis inhibitor; Thrombin activatable fibrinolysis inhibitor.
Organism Species:	Rabbit
Clonality:	Polyclonal
React Species:	Human,Mouse,Rat,Dog,Cow,Horse,
Applications:	ELISA=1:500-1000IHC-P=1:400-800IHC-F=1:400-800IF=1:100-500 (Paraffin sections need antigen repair) not yet tested in other applications. optimal dilutions/concentrations should be determined by the end user.
Molecular weight:	36kDa
Cellular localization:	Secretory protein
Form:	Lyophilized or Liquid
Concentration:	1mg/ml
immunogen:	KLH conjugated synthetic peptide derived from human CPB2:131-230/423
Lsotype:	IgG
Purification:	affinity purified by Protein A
Storage Buffer:	0.01M TBS(pH7.4) with 1% BSA, 0.03% Proclin300 and 50% Glycerol.
Storage:	Store at -20 癆 for one year. Avoid repeated freeze/thaw cycles. The lyophilized antibody is stable at room temperature for at least one month and for greater than a year when kept at -20癆. When reconstituted in sterile pH 7.4 0.01M PBS or diluent of antibody the antibody is stable for at least two weeks at 2-4 癆.
PubMed:	PubMed
Product Detail:	This protein belongs to a family of Zn-containing metallocarboxypeptidases specific to C-terminal lysine and arginine residues. It circulates in plasma as a zymogen with

molecular weight of 55 kDa (401 amino acid residues; pI 5.0). Being activated by thrombin-thrombomodulin complex during blood coagulation, it exerts carboxypeptidase activity. Activated carboxypeptidase B2 removes C-terminal lysine residues from fibrin, which is necessary for plasminogen binding to fibrin. This prevents plasminogen from activation into plasmin and retards the lysis of a fibrin clot. The concentration in plasma of healthy people is 5-10 ug/ml. High plasma levels were found in patients with stable angina pectoris and angiographically verified coronary artery disease. Elevated concentration in blood is considered as a risk factor for venous thrombosis. A deficiency might contribute to the severity of bleeding disorders in hemophilias A and B, and decreased levels are found in chronic liver disease.

Function:

Cleaves C-terminal arginine or lysine residues from biologically active peptides such as kinins or anaphylatoxins in the circulation thereby regulating their activities. Down-regulates fibrinolysis by removing C-terminal lysine residues from fibrin that has already been partially degraded by plasmin.

Subcellular Location:

Secreted

Tissue Specificity:

Plasma; synthesized in the liver.

Similarity:

Belongs to the peptidase M14 family.

SWISS:

Q96IY4

Gene ID:

1361

Database links:

[Entrez Gene: 1361](#)Human

[Entrez Gene: 56373](#)Mouse

[Entrez Gene: 113936](#)Rat

[Omin: 603101](#)Human

[SwissProt: Q96IY4](#)Human

[SwissProt: Q9JHH6](#)Mouse

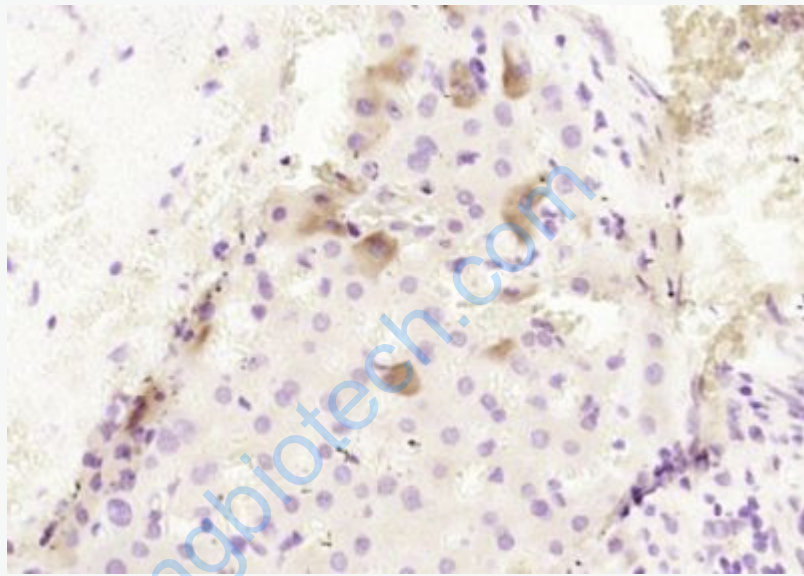
[SwissProt: Q9EQV9](#)Rat

[Unigene: 512937](#)Human

[Unigene: 12572](#)Rat

Important Note:

This product as supplied is intended for research use only, not for use in human, therapeutic or diagnostic applications.



Picture:

Paraformaldehyde-fixed, paraffin embedded (human liver); Antigen retrieval by boiling in sodium citrate buffer (pH6.0) for 15min; Block endogenous peroxidase by 3% hydrogen peroxide for 20 minutes; Blocking buffer (normal goat serum) at 37°C for 30min; Antibody incubation with (CPB2) Polyclonal Antibody, Unconjugated (SL7547R) at 1:200 overnight at 4°C, followed by operating according to SP Kit(Rabbit) (sp-0023) instructions and DAB staining.