



Rabbit Anti-AUP1 antibody

SL7550R

Product Name:	AUP1
Chinese Name:	原始广泛存在蛋白1抗体
Alias:	AA589454; AUP 1; AUP1; AUP1 HUMAN; Ancient ubiquitous protein 1.
Organism Species:	Rabbit
Clonality:	Polyclonal
React Species:	Human,Mouse,Rat,Dog,Cow,Horse,Rabbit,Sheep,
Applications:	WB=1:500-2000ELISA=1:500-1000IHC-P=1:400-800IHC-F=1:400-800IF=1:100-500 (Paraffin sections need antigen repair) not yet tested in other applications. optimal dilutions/concentrations should be determined by the end user.
Molecular weight:	53kDa
Cellular localization:	cytoplasmicThe cell membrane
Form:	Lyophilized or Liquid
Concentration:	1mg/ml
immunogen:	KLH conjugated synthetic peptide derived from human AUP1/Ancient ubiquitous protein 1:381-476/476
Lsotype:	IgG
Purification:	affinity purified by Protein A
Storage Buffer:	0.01M TBS(pH7.4) with 1% BSA, 0.03% Proclin300 and 50% Glycerol.
Storage:	Store at -20 °C for one year. Avoid repeated freeze/thaw cycles. The lyophilized antibody is stable at room temperature for at least one month and for greater than a year when kept at -20°C. When reconstituted in sterile pH 7.4 0.01M PBS or diluent of antibody the antibody is stable for at least two weeks at 2-4 °C.
PubMed:	PubMed
Product Detail:	Ancient ubiquitous protein 1 (AUP1) contains a domain with homology to the ancient conserved region of the archain 1 gene and a domain that may be involved in binding ubiquitin-conjugating enzymes. It has been shown to bind to the conserved membrane-proximal sequence of the cytoplasmic tail of integrin alpha(IIb) subunits. Function:

May play a role in the translocation of terminally misfolded proteins from the endoplasmic reticulum lumen to the cytoplasm and their degradation by the proteasome.

Subunit:

Identified in a complex that contains SEL1L, OS9, FAF2/UBXD8, UBE2J1/UBC6E and AUP1. Interacts with the cytoplasmic tail of ITGA2B, ITGA1, ITGA2, ITGA5, ITGAV and ITGAM.

Subcellular Location:

Endoplasmic reticulum membrane; Single-pass type III membrane protein; Cytoplasmic side.

Tissue Specificity:

Detected in blood platelets and leukocytes (at protein level). Ubiquitous. Highly expressed in placenta, liver, kidney, skeletal muscle, heart and brain.

Similarity:

Belongs to the AUP1 family.
Contains 1 CUE domain.

SWISS:

Q9Y679

Gene ID:

550

Database links:

[Entrez Gene: 550](#)Human

[Entrez Gene: 11993](#)Mouse

[Entrez Gene: 680423](#)Rat

[Omim: 602434](#)Human

[SwissProt: Q9Y679](#)Human

[SwissProt: P70295](#)Mouse

[SwissProt: A1L134](#)Rat

[Unigene: 411480](#)Human

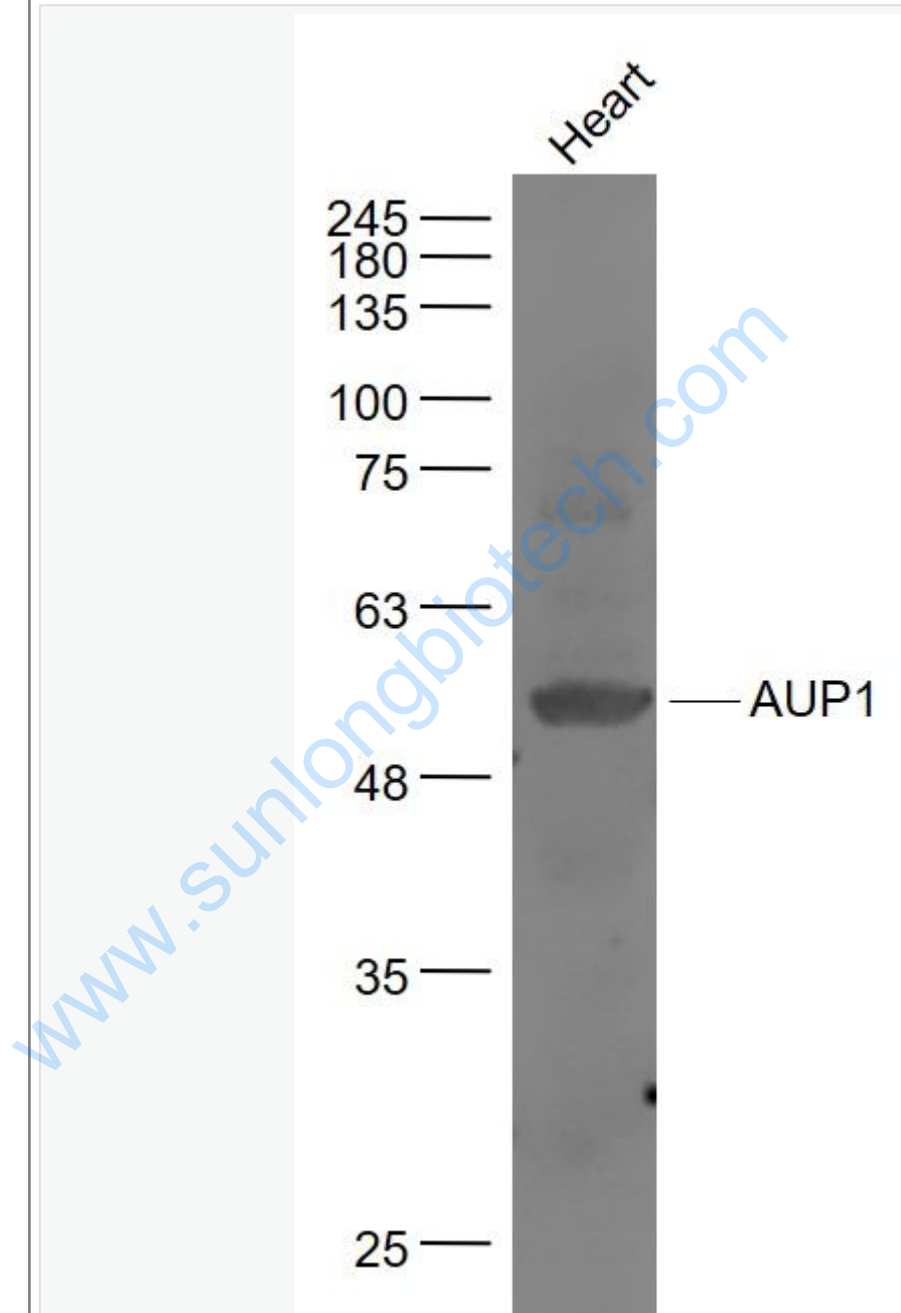
[Unigene: 386752](#)Mouse

[Unigene: 198163](#)Rat

Important Note:

This product as supplied is intended for research use only, not for use in human, therapeutic or diagnostic applications.

Picture:



Sample:

Heart (Mouse) Lysate at 40 ug

Primary: Anti- AUP1 (SL7550R) at 1/1000 dilution

Secondary: IRDye800CW Goat Anti-Rabbit IgG at 1/20000 dilution

Predicted band size: 53 kD

Observed band size: 53 kD

www.sunlongbiotech.com