



## Rabbit Anti-RNF36 antibody

SL7569R

<b>Product Name:</b>	RNF36
<b>Chinese Name:</b>	Ring finger protein36抗体
<b>Alias:</b>	HSD34; RFP like domain containing protein trimless; RFP-like domain-containing protein trimless; RING finger protein 36; RNF36; TRI69_HUMAN; Trif; Trim69; Trimless; Tripartite motif containing 69; tripartite motif containing protein 69; tripartite motif protein 69; Tripartite motif-containing protein 69.
<b>Organism Species:</b>	Rabbit
<b>Clonality:</b>	Polyclonal
<b>React Species:</b>	Human,Mouse,Rat,Dog,Cow,Sheep,
<b>Applications:</b>	WB=1:500-2000ELISA=1:500-1000IHC-P=1:400-800IHC-F=1:400-800IF=1:100-500 (Paraffin sections need antigen repair) not yet tested in other applications. optimal dilutions/concentrations should be determined by the end user.
<b>Molecular weight:</b>	57kDa
<b>Cellular localization:</b>	The nucleus
<b>Form:</b>	Lyophilized or Liquid
<b>Concentration:</b>	1mg/ml
<b>immunogen:</b>	KLH conjugated synthetic peptide derived from human RNF36:65-160/500
<b>Lsotype:</b>	IgG
<b>Purification:</b>	affinity purified by Protein A
<b>Storage Buffer:</b>	0.01M TBS(pH7.4) with 1% BSA, 0.03% Proclin300 and 50% Glycerol.
<b>Storage:</b>	Store at -20 °C for one year. Avoid repeated freeze/thaw cycles. The lyophilized antibody is stable at room temperature for at least one month and for greater than a year when kept at -20°C. When reconstituted in sterile pH 7.4 0.01M PBS or diluent of antibody the antibody is stable for at least two weeks at 2-4 °C.
<b>PubMed:</b>	<a href="#">PubMed</a>
<b>Product Detail:</b>	This gene encodes a member of the RING-B-box-coiled-coil (RBCC) family and encodes a protein with an N-terminal RING finger motif, a PRY domain and a C-terminal SPRY domain. The mouse ortholog of this gene is specifically expressed in germ cells at the round spermatid stages during spermatogenesis and, when

overexpressed, induces apoptosis. Alternatively spliced transcript variants encoding distinct isoforms have been described.

**Function:**

May play a role in apoptosis.

**Subunit:**

Interacts with PML

**Subcellular Location:**

Nucleus speckle

**Post-translational modifications:**

Phosphorylated. Phosphorylation is necessary for nuclear localization

**Similarity:**

Belongs to the TRIM/RBCC family.

Contains 1 B30.2/SPRY domain.

Contains 1 RING-type zinc finger.

**SWISS:**

Q86WT6

**Gene ID:**

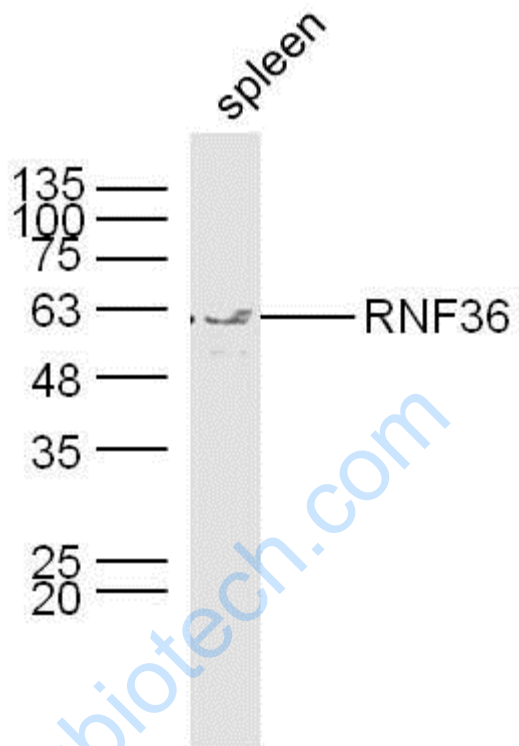
140691

**Database links:**

**Important Note:**

This product as supplied is intended for research use only, not for use in human, therapeutic or diagnostic applications.

Picture:



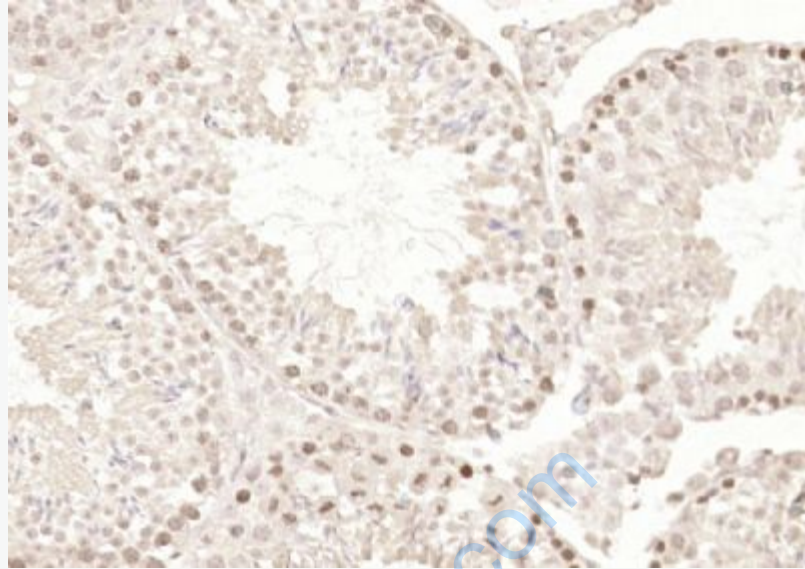
Sample: Spleen (Mouse) Lysate at 40 ug

Primary: Anti-RNF36 (SL7569R) at 1/300 dilution

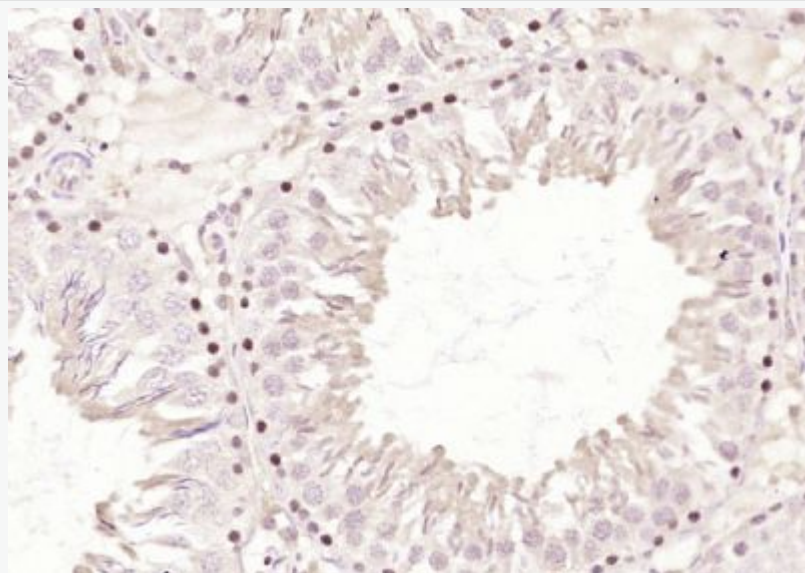
Secondary: IRDye800CW Goat Anti-Rabbit IgG at 1/20000 dilution

Predicted band size: 57 kD

Observed band size: 57 kD



Paraformaldehyde-fixed, paraffin embedded (mouse testis); Antigen retrieval by boiling in sodium citrate buffer (pH6.0) for 15min; Block endogenous peroxidase by 3% hydrogen peroxide for 20 minutes; Blocking buffer (normal goat serum) at 37°C for 30min; Antibody incubation with (RNF36) Polyclonal Antibody, Unconjugated (SL7569R) at 1:200 overnight at 4°C, followed by operating according to SP Kit(Rabbit) (sp-0023) instructions and DAB staining.



Paraformaldehyde-fixed, paraffin embedded (rat testis); Antigen retrieval by boiling in sodium citrate buffer (pH6.0) for 15min; Block endogenous peroxidase by 3% hydrogen peroxide for 20 minutes; Blocking buffer (normal goat serum) at 37°C for 30min; Antibody incubation with (RNF36) Polyclonal Antibody, Unconjugated (SL7569R) at 1:200 overnight at 4°C, followed by operating according to SP Kit(Rabbit) (sp-0023) instructions and DAB staining.

[www.sunlongbiotech.com](http://www.sunlongbiotech.com)