



Rabbit Anti-BCL2L15 antibody

SL7582R

Product Name:	BCL2L15
Chinese Name:	BCL2样15促凋亡蛋白抗体
Alias:	B2L15_HUMAN; Bcl-2-like protein 15; Bcl2-L-15; BCL2-like 15; Bcl2l15; Bfk; C1orf178; FLJ22588; pro-apoptotic Bcl-2 protein.
Organism Species:	Rabbit
Clonality:	Polyclonal
React Species:	Human,Mouse,Rat,Dog,Cow,Horse,Rabbit,Sheep,
Applications:	WB=1:500-2000ELISA=1:500-1000IHC-P=1:400-800IHC-F=1:400-800IF=1:100-500 (Paraffin sections need antigen repair) not yet tested in other applications. optimal dilutions/concentrations should be determined by the end user.
Molecular weight:	18kDa
Cellular localization:	The nucleuscytoplasmic
Form:	Lyophilized or Liquid
Concentration:	1mg/ml
immunogen:	KLH conjugated synthetic peptide derived from human BCL2L15:65-163/163
Lsotype:	IgG
Purification:	affinity purified by Protein A
Storage Buffer:	0.01M TBS(pH7.4) with 1% BSA, 0.03% Proclin300 and 50% Glycerol.
Storage:	Store at -20 °C for one year. Avoid repeated freeze/thaw cycles. The lyophilized antibody is stable at room temperature for at least one month and for greater than a year when kept at -20°C. When reconstituted in sterile pH 7.4 0.01M PBS or diluent of antibody the antibody is stable for at least two weeks at 2-4 °C.
PubMed:	PubMed
Product Detail:	BCL2L15 is a 163 amino acid protein and novel member of the Bcl-2 family that contains both BH2 and BH3 regions, but not BH1, BH4 or a C-terminal hydrophobic membrane anchor. Like Bcl-GL, Bfk does not bind to any Bcl-2 family members, even though its BH3 motif can mediate association with prosurvival proteins. Bfk localizes to cytoplasm, but unlike Bcl-GL, Bfk does not associate with organelles. Existing as four alternatively spliced isoforms, the pro-apoptotic isoforms of Bfk may help to protect

against the development of human gastrointestinal malignancy. Bfk is found at low levels in stomach, ovary, bone marrow and spleen, but Bfk is highly expressed in mammary gland during pregnancy, suggesting that Bfk may play a role in mammary development. Bfk appears to be a cytosolic protein whose gene maps to chromosome 1p13.2. Chromosome 1 is the largest human chromosome spanning about 260 million base pairs and making up 8% of the human genome.

SWISS:
Q5TBC7

Gene ID:
440603

Database links:

UniProtKB/Swiss-Prot: Q5TBC7.1

[Entrez Gene: 440603](#) Human

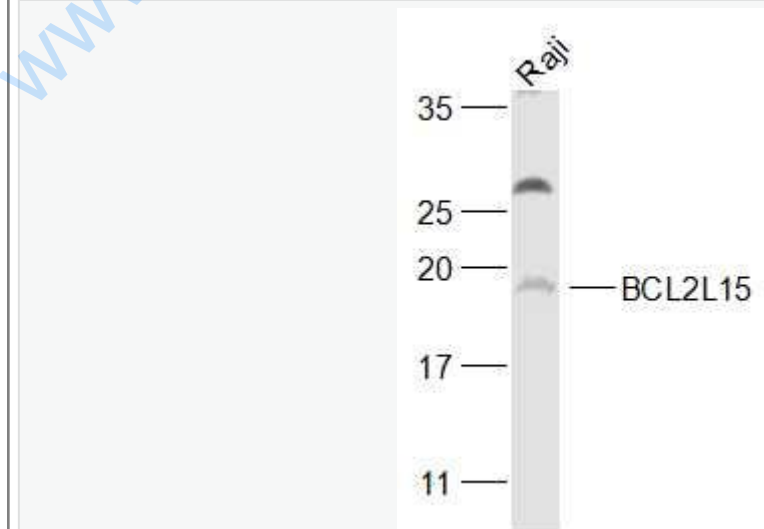
[SwissProt: Q5TBC7](#) Human

[Unigene: 123106](#) Human

Important Note:

This product as supplied is intended for research use only, not for use in human, therapeutic or diagnostic applications.

Picture:



Sample:

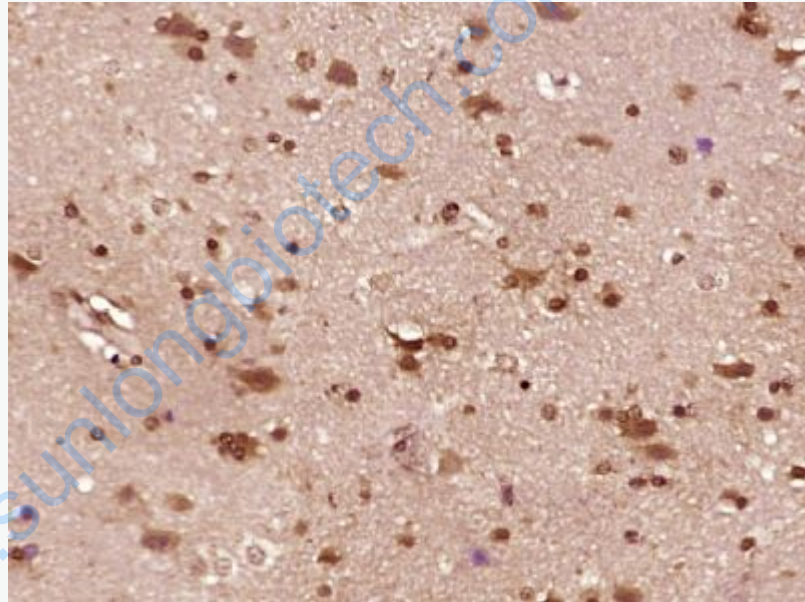
Raji(Human) Cell Lysate at 30 ug

Primary: Anti-BCL2L15 (SL7582R) at 1/1000 dilution

Secondary: IRDye800CW Goat Anti-Rabbit IgG at 1/20000 dilution

Predicted band size: 18 kD

Observed band size: 19kD



Paraformaldehyde-fixed, paraffin embedded (human brain glioma); Antigen retrieval by boiling in sodium citrate buffer (pH6.0) for 15min; Block endogenous peroxidase by 3% hydrogen peroxide for 20 minutes; Blocking buffer (normal goat serum) at 37°C for 30min; Antibody incubation with (BCL2L15) Polyclonal Antibody, Unconjugated (SL7582R) at 1:400 overnight at 4°C, followed by operating according to SP Kit(Rabbit) (sp-0023) instructions and DAB staining.