



Rabbit Anti-Bcl 2 like 13 protein antibody

SL7584R

Product Name:	Bcl 2 like 13 protein
Chinese Name:	Bcl2样凋亡蛋白13抗体
Alias:	Apoptosis facilitator; Bcl 2 like 13; Bcl 2 like 13 protein; BCL2 like 13 apoptosis facilitator; BCL2 like 13; Bcl2 like 13 protein; BCL2L13; MIL 1; MIL1; MIL1 protein; Protein Mill; B2L13 HUMAN.
Organism Species:	Rabbit
Clonality:	Polyclonal
React Species:	Human,Mouse,Chicken,Dog,Pig,Horse,Rabbit,
Applications:	WB=1:500-2000ELISA=1:500-1000IHC-P=1:400-800IHC-F=1:400-800IF=1:100-500 (Paraffin sections need antigen repair) not yet tested in other applications. optimal dilutions/concentrations should be determined by the end user.
Molecular weight:	53kDa
Cellular localization:	The nucleuscytoplasmicThe cell membrane
Form:	Lyophilized or Liquid
Concentration:	1mg/ml
immunogen:	KLH conjugated synthetic peptide derived from human Bcl rambo/Bcl 2 like 13 protein:281-380/485
Lsotype:	IgG
Purification:	affinity purified by Protein A
Storage Buffer:	0.01M TBS(pH7.4) with 1% BSA, 0.03% Proclin300 and 50% Glycerol.
Storage:	Store at -20 °C for one year. Avoid repeated freeze/thaw cycles. The lyophilized antibody is stable at room temperature for at least one month and for greater than a year when kept at -20°C. When reconstituted in sterile pH 7.4 0.01M PBS or diluent of antibody the antibody is stable for at least two weeks at 2-4 °C.
PubMed:	PubMed
Product Detail:	Bcl rambo shares common structural characteristics with other members of the anti-apoptotic Bcl2 family members, but differs from them at its C-terminus, where a 250 amino acid sequence precedes the membrane anchor region. It also differs from other pro-apoptotic Bcl-2 family members in that its membrane anchor C-terminus region is

responsible for its apoptotic activity, not its Bcl-2 homology motifs. Bcl-2 may promote the activation of caspase-3 and apoptosis.

Function:

May promote the activation of caspase-3 and apoptosis.

Subunit:

Monomer

Subcellular Location:

Isoform 2: Mitochondrion membrane; Single-pass membrane protein (Potential).

Nucleus.

Isoform 1: Nucleus

Tissue Specificity:

Ubiquitous, with the highest levels of expression in heart, placenta and pancreas.

Similarity:

Belongs to the Bcl-2 family.

SWISS:

Q9B XK5

Gene ID:

23786

Database links:

[Entrez Gene: 23786](#)Human

[Entrez Gene: 94044](#)Mouse

[SwissProt: Q9B XK5](#)Human

[SwissProt: P59017](#)Mouse

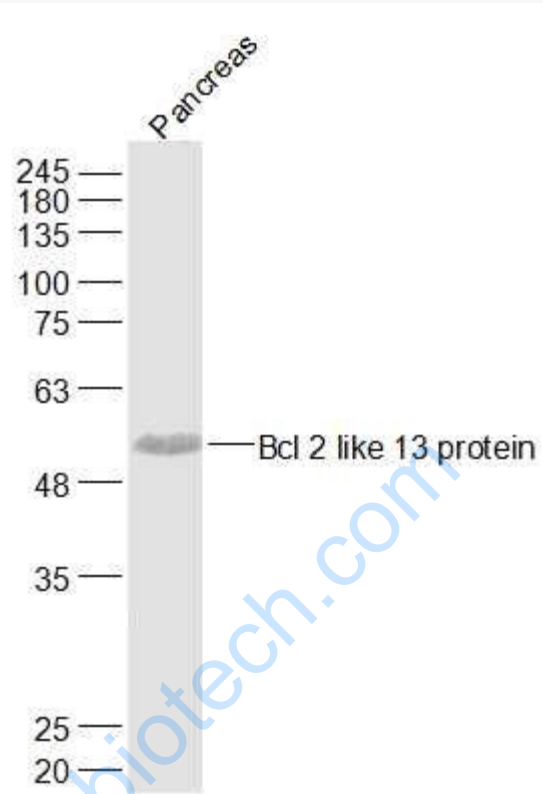
[Unigene: 631672](#)Human

[Unigene: 27990](#)Mouse

Important Note:

This product as supplied is intended for research use only, not for use in human, therapeutic or diagnostic applications.

Picture:



Sample:

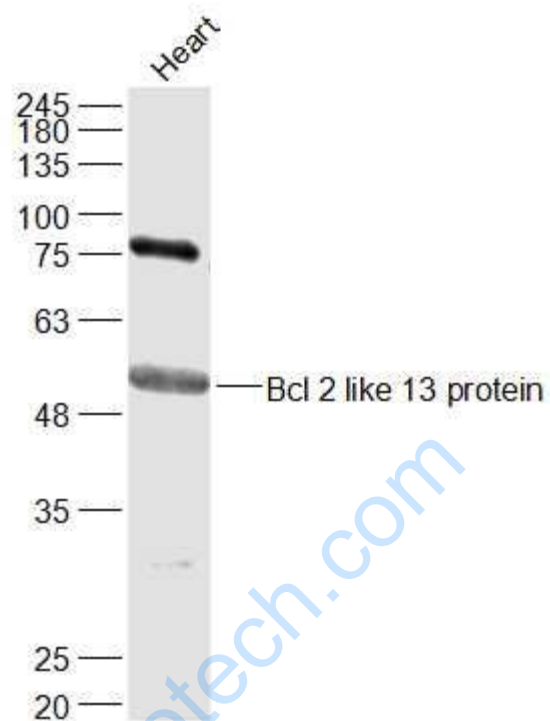
Pancreas (Mouse) Lysate at 40 ug

Primary: Anti-Bcl 2 like 13 protein (SL7584R) at 1/1000 dilution

Secondary: IRDye800CW Goat Anti-Rabbit IgG at 1/20000 dilution

Predicted band size: 53 kD

Observed band size: 55 kD



Sample:

Heart (Mouse) Lysate at 40 ug

Primary: Anti-Bcl 2 like 13 protein (SL7584R) at 1/1000 dilution

Secondary: IRDye800CW Goat Anti-Rabbit IgG at 1/20000 dilution

Predicted band size: 53 kD

Observed band size: 55 kD