



## Rabbit Anti-SEPT10 antibody

SL7770R

<b>Product Name:</b>	SEPT10
<b>Chinese Name:</b>	Cell differentiation蛋白SEPT10抗体
<b>Alias:</b>	SEPT 10; SEPT-10; Septin 10; Septin-10; Septin 10; SEP10 HUMAN.
<b>Organism Species:</b>	Rabbit
<b>Clonality:</b>	Polyclonal
<b>React Species:</b>	Human,Mouse,Rat,Chicken,Pig,Horse,Rabbit,
<b>Applications:</b>	WB=1:500-2000ELISA=1:500-1000IHC-P=1:400-800IHC-F=1:400-800IF=1:100-500 (Paraffin sections need antigen repair) not yet tested in other applications. optimal dilutions/concentrations should be determined by the end user.
<b>Molecular weight:</b>	53kDa
<b>Cellular localization:</b>	cytoplasmic
<b>Form:</b>	Lyophilized or Liquid
<b>Concentration:</b>	1mg/ml
<b>immunogen:</b>	KLH conjugated synthetic peptide derived from human SEPT10:121-220/454
<b>Lsotype:</b>	IgG
<b>Purification:</b>	affinity purified by Protein A
<b>Storage Buffer:</b>	0.01M TBS(pH7.4) with 1% BSA, 0.03% Proclin300 and 50% Glycerol.
<b>Storage:</b>	Store at -20 °C for one year. Avoid repeated freeze/thaw cycles. The lyophilized antibody is stable at room temperature for at least one month and for greater than a year when kept at -20°C. When reconstituted in sterile pH 7.4 0.01M PBS or diluent of antibody the antibody is stable for at least two weeks at 2-4 °C.
<b>PubMed:</b>	<a href="#">PubMed</a>
<b>Product Detail:</b>	<p>The SEPT10 gene encodes a member of the septin family of cytoskeletal proteins which have GTPase activity. This protein localizes to the cytoplasm and nucleus and displays GTP-binding and GTPase activity. Alternate splicing results in two transcript variants encoding different isoforms.</p> <p><b>Function:</b> Filament-forming cytoskeletal GTPase. May play a role in cytokinesis (Potential).</p>

**Subunit:**

Septins polymerize into heterooligomeric protein complexes that form filaments, and can associate with cellular membranes, actin filaments and microtubules. GTPase activity is required for filament formation (By similarity).

**Subcellular Location:**

Cytoplasm. Cytoplasm, cytoskeleton (By similarity). Note=Using a GFP-fusion protein, detected in the nucleus (PubMed:12711328).

**Tissue Specificity:**

Widely expressed. Abundantly expressed in heart and kidney, placenta, skeletal muscles, liver and lung, as well as various tumor cell lines.

**Similarity:**

Belongs to the septin family.

**SWISS:**

Q9P0V9

**Gene ID:**

151011

**Database links:**

[Entrez Gene: 151011](#)Human

[Entrez Gene: 103080](#)Mouse

[Omim: 611737](#)Human

[SwissProt: Q9P0V9](#)Human

[SwissProt: Q8C650](#)Mouse

[Unigene: 469615](#)Human

[Unigene: 346842](#)Mouse

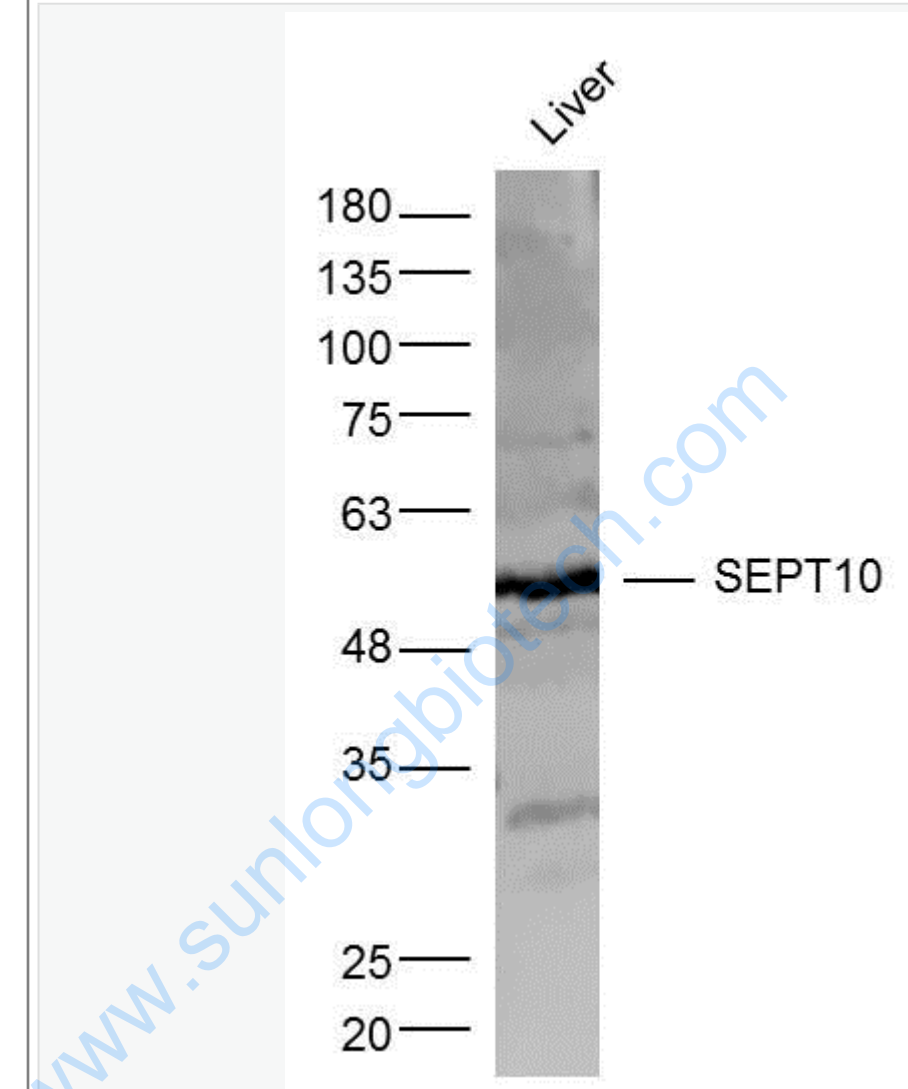
[Unigene: 397041](#)Mouse

**Important Note:**

This product as supplied is intended for research use only, not for use in human, therapeutic or diagnostic applications.

SEPTIN(SEPT)家族是Cytoskeleton蛋白的一种, 具有GTPase的活性。经研究发现, SEPT参与The nucleus分裂、The cell membrane的运输以及构成Cytoskeleton。

Picture:



Sample:

Liver (Mouse) Lysate at 40 ug

Primary: Anti- SEPT10 (SL7770R) at 1/300 dilution

Secondary: IRDye800CW Goat Anti-Rabbit IgG at 1/20000 dilution

Predicted band size: 53 kD

Observed band size: 53 kD

